

1 Switches

- IP66, IP67, IP68
- SPST, SPDT, DPST, DPDT, and 3PDT
- Solder type, PCB and quick connect terminations
- LED lighted actuators w/ color options



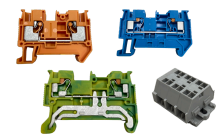
2 Rails/Tracks

- Height : 7.5mm
- Length : 1000mm or 2000mm
- Width: 35mm
- Material: Aluminum Alloy



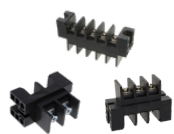
3 Euro Blocks

- Pitch sizes: 3.50mm-15.00mm
- Top, side, or side-angle wire entry
- Pluggable and lever-actuated options



4 DIN Rail Terminal Blocks

- 15A to 65A
- 300V or 600V
- Color options: blue, gray, green/yellow, orange
- Compatible end covers, caps, and rails/tracks available



5 Terminal Blocks

- Five centerline pitches available
- Open or closed back options
- Bulkhead or PCB mounting
- Straight or right-angle PCB terminals
- Cliptite and turret terminal options



6 Modular Jacks

- 4P2C to 10P10C
- Integrated magnetics options
- Metal shielding options



7 RJ45 Cable Assemblies

- Complete range of RJ45-to-RJ45 Ethernet cable assemblies
- Supports Cat5E and Cat6 standards
- Available in multiple lengths and colors
- Bubble boot option



8 IDC Wire to Board

- Pitch sizes: 1.27, 2.54, 3.96 mm
- 18-28 AWG wires
- Long/short body, closed end or feed-through