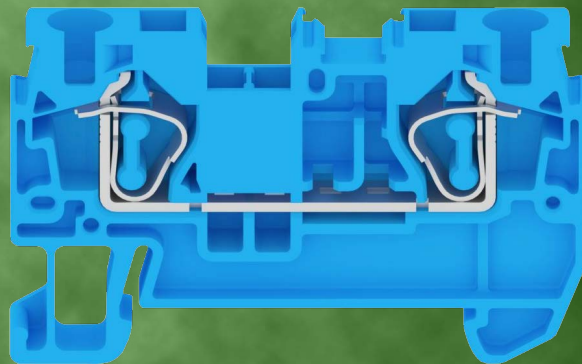
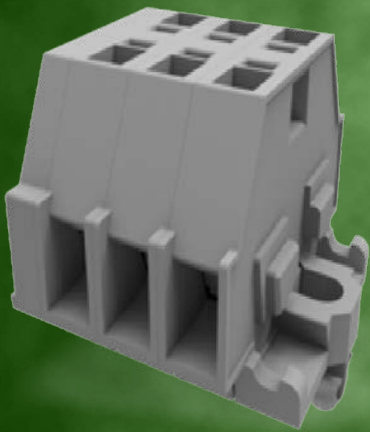
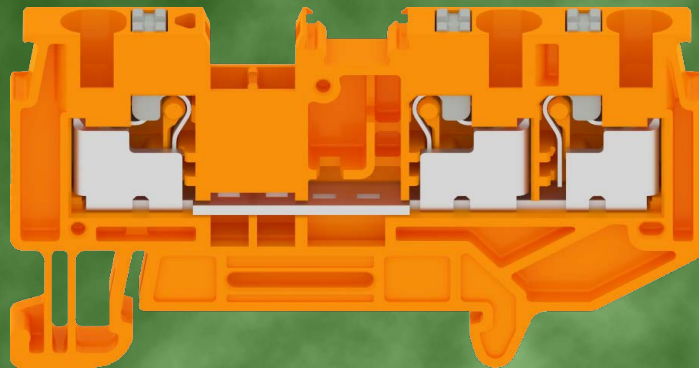


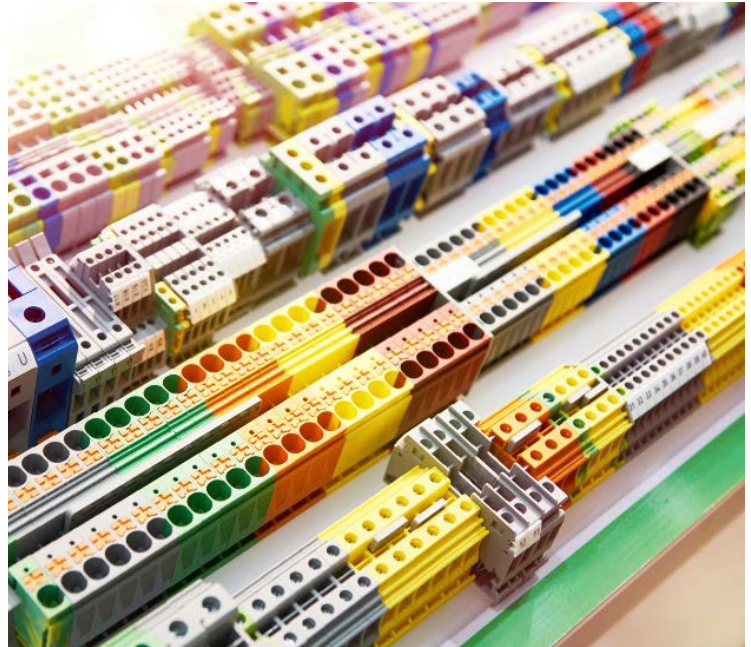
ADAME TECH



DIN Rail Terminal Blocks

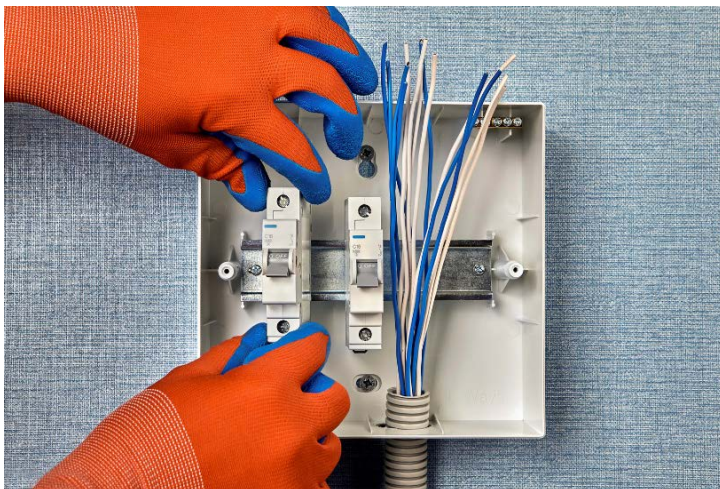
DIN Rail Terminal Blocks

Adam Tech's REB Series DIN Rail Terminal Blocks offer a reliable and safe solution for connecting conductors to DIN rails. Available in spring cage, push-in, and micro spring cage configurations, this versatile series offers a range of cross sectional area wire ranges, colors, and other options to meet the needs of various applications. Compatible rails and protective covers/caps are also available, with the covers/caps providing additional insulation to protect the terminal blocks from damage.



Features and Benefits:

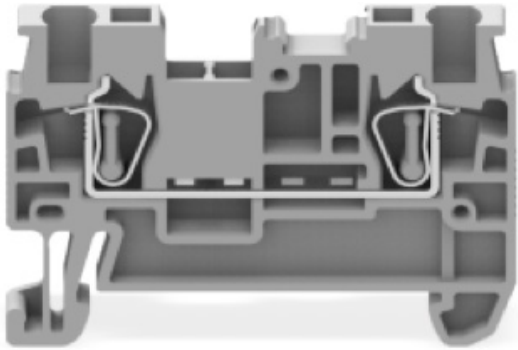
- Allows for safe and reliable wire connections
- Current range: 15A to 65A
- Voltage: 300 or 600V
- Various cross sectional area wire ranges
- Color options: blue, gray, green/yellow, and orange
- Compatible end covers/caps and rails/tracks available



Applications:

- Telecommunications equipment
- Building management systems
- Energy regulation and conservation equipment
- Air conditioning and heating systems
- Power supplies
- Lighting control systems
- Control, automation and signaling systems
- Vehicle electronics

Terminal Block Types

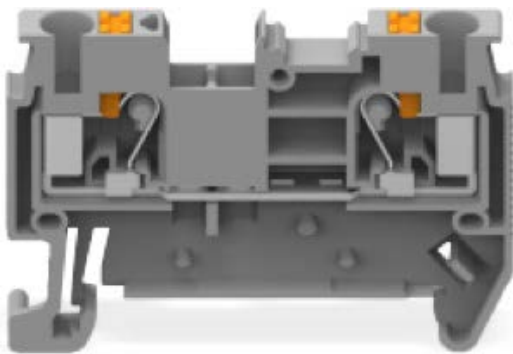


REB-A (Spring Cage Terminal Block)

- Anti-vibration
- Compatible with solid and stranded wires
- Design covers various wiring requirements and reduces wiring errors

MATERIAL CHARACTERISTICS:

- PA66 Insulator Housing: halogen-free, flame retardant, and impact and chemical resistant
- Highly Conductive Copper: surface covered with a protective layer of tin
- High Strength Chrome-Nickel Spring: sufficient pressing force



REB-B (Push-In Terminal Block)

- Wiring does not require special tools
- Button operation
- Compatible with solid and stranded wires
- Design covers various wiring requirements and reduces wiring errors

MATERIAL CHARACTERISTICS:

- PA66 Insulator Housing: halogen-free, flame retardant, and impact and chemical resistant
- Highly Conductive Copper: surface covered with a protective layer of tin
- High Strength Chrome-Nickel Spring: sufficient pressing force



REB-XX-C (Micro Spring Cage Terminal Block)

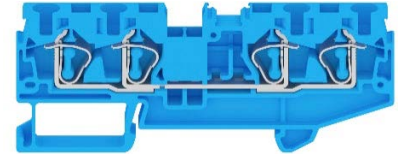
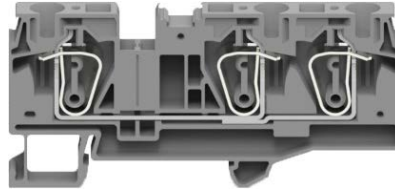
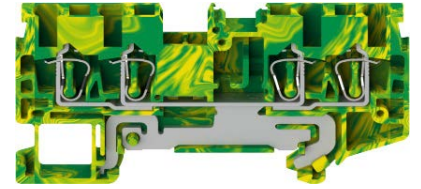
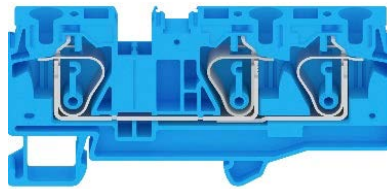
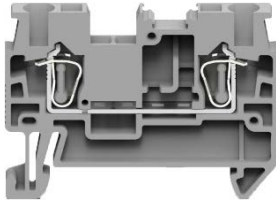
- Cage spring connection technology
- Compact
- Compatible with solid and stranded wires

1 in 1 out

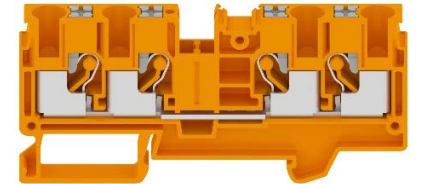
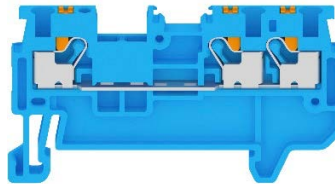
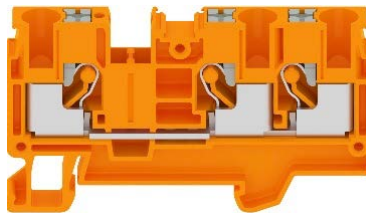
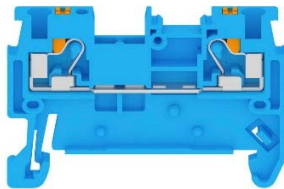
1 in 2 out

2 in 2 out

**REB-A
Spring
Cage**



**REB-B
Push-In**



**REB-XX-C
Micro Spring
Cage**



SPRING CAGE & PUSH-IN PART NUMBER CONFIGURATION

REB- A		4	A	-	XX
SERIES	BODY STYLE	NUMBER OF HOLES	CROSS SECTIONAL AREA WIRE RANGE		INSULATOR COLOR
REB = Railway Terminal	A = Spring Cage B = Push-In	2 3 4 <i>*see pages 6-17 or drawings for more details</i>	A = Solid/Stranded: 24~16 AWG, 0.2~1.5mm ² B = Solid: 24~12 AWG, 0.2~4.0mm ² / Stranded: 24~14 AWG, 0.2~2.5mm ² C = Solid: 24~10 AWG, 0.2~6.0mm ² / Stranded: 24~12 AWG, 0.2~4.0mm ² D = Solid: 24~8 AWG, 0.2~10.0mm ² / Stranded: 24~10 AWG, 0.2~6.0mm ² E = Solid: 24~6 AWG, 0.2~16.0mm ² / Stranded: 24~8 AWG, 0.2~10.0mm ² <i>*see pages 6-17 or drawings for more details</i>		BU = Blue OR = Orange GY = Gray YG = Yellow/ Green

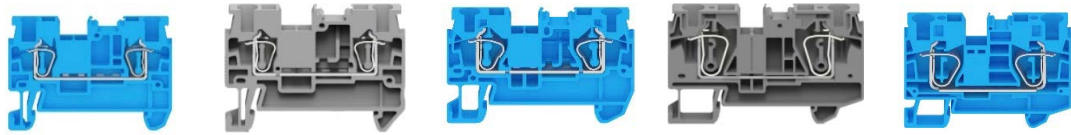
MICRO CAGE PART NUMBER CONFIGURATION

REB - XX - C		A	A	-	001
SERIES	PIN	BODY STYLE	CROSS SECTIONAL AREA WIRE RANGE	PITCH	SERIAL NUMBER
REB = Railway Terminal	XX = Pin	C = Micro Cage	A = Solid/Stranded: 28~16 AWG, 0.2~1.5mm ² B = Solid/Stranded: 28~14 AWG, 0.2~2.5mm ² C = Solid/Stranded: 28~12 AWG, 0.2~4.0mm ² <i>*see pages 18-20 or drawings for more details</i>	A = .197 [5.00mm] B = .236 [6.00mm] C = .276 [7.00mm] D = .315 [8.00mm] E = .394 [10.00mm] F = .472 [12.00mm]	

REB-A2X-XX

Spring Cage Terminal Block

ISULATOR COLOR	
BU	Blue
GY	Gray



P/N	REB-A2A-XX			REB-A2B-XX			REB-A2C-XX			REB-A2D-XX			REB-A2E-XX		
CIRCUIT DIAGRAM	1 in 1 out			1 in 1 out			1 in 1 out			1 in 1 out			1 in 1 out		
TECHNICAL DATA (UL 1059)															
User Group	B	C	D	B	C	D	B	C	D	B	C	D	B	C	D
Rated Voltage [V]	300	300	600	600	600	600	600	600	600	600	600	600	600	600	600
Rated Current [A]	15	15	5	20	20	5	30	30	5	50	50	5	65	65	5
TECHNICAL DATA (IEC 60947-7-1)															
Rated Voltage [V]	500			800			800			1000			1000		
Rated Current [A]	17.5			24			32			41			57		
Solid (Cross Sectional Area Wire Range)	24~16 AWG / 0.2~1.5mm ²			24~12 AWG / 0.2~4.0mm ²			24~10 AWG / 0.2~6.0mm ²			24~8 AWG / 0.2~10.0mm ²			24~6 AWG / 0.2~16.0mm ²		
Stranded (Cross Sectional Area Wire Range)	24~16 AWG / 0.2~1.5mm ²			24~14 AWG / 0.2~2.5mm ²			24~12 AWG / 0.2~4.0mm ²			24~10 AWG / 0.2~6.0mm ²			24~8 AWG / 0.2~10.0mm ²		
Overtoltage Category	III			III			III			III			III		
Degree of Pollution	3			3			3			3			3		
Impulse Withstand Voltage	8KV			8KV			8KV			8KV			8KV		
MATERIAL															
Insulation Material	PA66			PA66			PA66			PA66			PA66		
Flammability Rating	UL94V-0			UL94V-0			UL94V-0			UL94V-0			UL94V-0		
Contact Material	Copper alloy			Copper alloy			Copper alloy			Copper alloy			Copper alloy		
Contact Plating	Sn Plated			Sn Plated			Sn Plated			Sn Plated			Sn Plated		
Dimension (L/H/Thickness)	48.7mm/35.4mm /4.2mm			48.8mm/35.4mm /5.2mm			56mm/35.4mm /6.2mm			69.5mm/42.6mm /8.2mm			71.5mm/49.5mm /10.2mm		
Stripped Length	.315"~.394" (8-10mm)			.315"~.394" (8-10mm)			.315"~.394" (8-10mm)			.472" (12mm)			.709" (18mm)		

REB-A2X-XX

Spring Cage Terminal Block

ISULATOR COLOR	
YG	Yellow Green

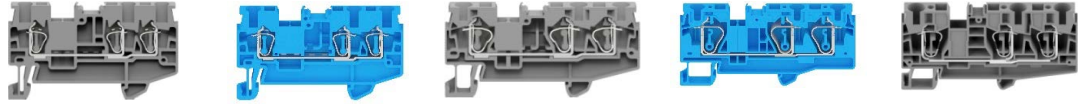


P/N	REB-A2A-YG			REB-A2B-YG			REB-A2C-YG			REB-A2D-YG			REB-A2E-YG		
CIRCUIT DIAGRAM	1 in out		1 in out		1 in out		1 in out		1 in out		1 in out		1 in out		
TECHNICAL DATA (UL 1059)															
User Group	B	C	D	B	C	D	B	C	D	B	C	D	B	C	D
Rated Voltage [V]	/	/	/	/	/	/	/	/	/	/	/	/	/	/	/
Rated Current [A]	/	/	/	/	/	/	/	/	/	/	/	/	/	/	/
TECHNICAL DATA (IEC 60947-7-1)															
Rated Voltage [V]	/			/			/			/			/		
Rated Current [A]	/			/			/			/			/		
Solid (Cross Sectional Area Wire Range)	24~16 AWG / 0.2~1.5mm ²			24~12 AWG / 0.2~4.0mm ²			24~10 AWG / 0.2~6.0mm ²			24~8 AWG / 0.2~10.0mm ²			24~6 AWG / 0.2~16.0mm ²		
Stranded (Cross Sectional Area Wire Range)	24~16 AWG / 0.2~1.5mm ²			24~14 AWG / 0.2~2.5mm ²			24~12 AWG / 0.2~4.0mm ²			24~10 AWG / 0.2~6.0mm ²			24~8 AWG / 0.2~10.0mm ²		
Overvoltage Category	III			III			III			III			III		
Degree of Pollution	3			3			3			3			3		
Impulse Withstand Voltage	6KV			8KV			8KV			8KV			8KV		
MATERIAL															
Insulation Material	PA66			PA66			PA66			PA66			PA66		
Flammability Rating	UL94V-0			UL94V-0			UL94V-0			UL94V-0			UL94V-0		
Contact Material	Copper alloy			Copper alloy			Copper alloy			Copper alloy			Copper alloy		
Contact Plating	Sn Plated			Sn Plated			Sn Plated			Sn Plated			Sn Plated		
Dimension (L/H/Thickness)	48.7mm/35.4mm /4.2mm			48.8mm/35.4mm /5.2mm			56mm/35.4mm /6.2mm			69.5mm/42.6mm /8.2mm			71.5mm/49.5mm /10.2mm		
Stripped Length	.315"~.394" (8-10mm)			.315"~.394" (8-10mm)			.315"~.394" (8-10mm)			.472" (12mm)			.709" (18mm)		

REB-A3X-XX

Spring Cage Terminal Block

INSULATOR COLOR	
BU	Blue
GY	Gray



P/N	REB-A3A-XX			REB-A3B-XX			REB-A3C-XX			REB-A3D-XX			REB-A3E-XX		
CIRCUIT DIAGRAM	1 in 2 out			1 in 2 out			1 in 2 out			1 in 2 out			1 in 2 out		
TECHNICAL DATA (UL 1059)															
User Group	B	C	D	B	C	D	B	C	D	B	C	D	B	C	D
Rated Voltage [V]	300	300	600	600	600	600	600	600	600	600	600	600	600	600	600
Rated Current [A]	15	15	5	20	20	5	30	30	5	50	50	5	55	55	5
TECHNICAL DATA (IEC 60947-7-1)															
Rated Voltage [V]	500			800			800			1000			1000		
Rated Current [A]	17.5			24			32			41			57		
Solid (Cross Sectional Area Wire Range)	24~16 AWG / 0.2~1.5mm ²			24~12 AWG / 0.2~4.0mm ²			24~10 AWG / 0.2~6.0mm ²			24~8 AWG / 0.2~10.0mm ²			24~6 AWG / 0.2~16.0mm ²		
Stranded (Cross Sectional Area Wire Range)	24~16 AWG / 0.2~1.5mm ²			24~14 AWG / 0.2~2.5mm ²			24~12 AWG / 0.2~4.0mm ²			24~10 AWG / 0.2~6.0mm ²			24~8 AWG / 0.2~10.0mm ²		
Overtoltage Category	III			III			III			III			III		
Degree of Pollution	3			3			3			3			3		
Impulse Withstand Voltage	6KV			8KV			8KV			8KV			8KV		
MATERIAL															
Insulation Material	PA66			PA66			PA66			PA66			PA66		
Flammability Rating	UL94V-0			UL94V-0			UL94V-0			UL94V-0			UL94V-0		
Contact Material	Copper alloy			Copper alloy			Copper alloy			Copper alloy			Copper alloy		
Contact Plating	Sn Plated			Sn Plated			Sn Plated			Sn Plated			Sn Plated		
Dimension (L/H/Thickness)	60.8mm/35.4mm /4.2mm			60.6mm/35.4mm /5.2mm			71.7mm/35.4mm /6.2mm			90.5mm/42.6mm /8.2mm			95.5mm/49.5mm /10.2mm		
Stripped Length	.315"~.394" (8-10mm)			.315"~.394" (8-10mm)			.315"~.394" (8-10mm)			.472" (12mm)			.709" (18mm)		

REB-A3X-XX

Spring Cage Terminal Block

ISULATOR COLOR	
YG	Yellow Green

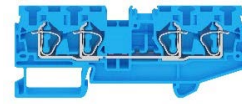
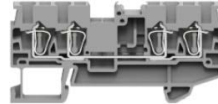


P/N	REB-A3A-YG			REB-A3B-YG			REB-A3C-YG			REB-A3D-YG			REB-A3E-YG		
CIRCUIT DIAGRAM	1 in 2 out			1 in 2 out			1 in 2 out			1 in 2 out			1 in 2 out		
TECHNICAL DATA (UL 1059)															
User Group	B	C	D	B	C	D	B	C	D	B	C	D	B	C	D
Rated Voltage [V]	/	/	/	/	/	/	/	/	/	/	/	/	/	/	/
Rated Current [A]	/	/	/	/	/	/	/	/	/	/	/	/	/	/	/
TECHNICAL DATA (IEC 60947-7-1)															
Rated Voltage [V]	/			/			/			/			/		
Rated Current [A]	/			/			/			/			/		
Solid (Cross Sectional Area Wire Range)	24~16 AWG / 0.2~1.5mm ²			24~12 AWG / 0.2~4.0mm ²			24~10 AWG / 0.2~6.0mm ²			24~8 AWG / 0.2~10.0mm ²			24~6 AWG / 0.2~16.0mm ²		
Stranded (Cross Sectional Area Wire Range)	24~16 AWG / 0.2~1.5mm ²			24~14 AWG / 0.2~2.5mm ²			24~12 AWG / 0.2~4.0mm ²			24~10 AWG / 0.2~6.0mm ²			24~8 AWG / 0.2~10.0mm ²		
Overtoltage Category	III			III			III			III			III		
Degree of Pullution	3			3			3			3			3		
Impulse Withstand Voltage	6KV			8KV			8KV			8KV			8KV		
MATERIAL															
Insulation Material	PA66			PA66			PA66			PA66			PA66		
Flammability Rating	UL94V-0			UL94V-0			UL94V-0			UL94V-0			UL94V-0		
Contact Material	Copper alloy			Copper alloy			Copper alloy			Copper alloy			Copper alloy		
Contact Plating	Sn Plated			Sn Plated			Sn Plated			Sn Plated			Sn Plated		
Dimension (L/H/Thickness)	60.8mm/35.4mm /4.2mm			60.6mm/35.4mm /5.2mm			71.7mm/35.4mm /6.2mm			90.5mm/42.6mm /8.2mm			95.5mm/49.5mm /10.2mm		
Stripped Length	.315"~.394" (8-10mm)			.315"~.394" (8-10mm)			.315"~.394" (8-10mm)			.472" (12mm)			.709" (18mm)		

REB-A4X-XX

Spring Cage Terminal Block

ISULATOR COLOR	
BU	Blue
GY	Gray



P/N	REB-A4A-XX			REB-A4B-XX			REB-A4C-XX		
CIRCUIT DIAGRAM	2 in 2 out			2 in 2 out			2 in 2 out		
TECHNICAL DATA (UL 1059)									
User Group	B	C	D	B	C	D	B	C	D
Rated Voltage [V]	300	300	600	600	600	600	600	600	600
Rated Current [A]	15	15	5	20	20	5	30	30	5
TECHNICAL DATA (IEC 60947-7-1)									
Rated Voltage [V]	500			800			800		
Rated Current [A]	17.5			24			32		
Solid (Cross Sectional Area Wire Range)	24~16 AWG / 0.2~1.5mm ²			24~12 AWG / 0.2~4.0mm ²			24~10 AWG / 0.2~6.0mm ²		
Stranded (Cross Sectional Area Wire Range)	24~16 AWG / 0.2~1.5mm ²			24~14 AWG / 0.2~2.5mm ²			24~12 AWG / 0.2~4.0mm ²		
Overvoltage Category	III			III			III		
Degree of Pollution	3			3			3		
Impulse Withstand Voltage	6KV			8KV			8KV		
MATERIAL									
Insulation Material	PA66			PA66			PA66		
Flammability Rating	UL94V-0			UL94V-0			UL94V-0		
Contact Material	Copper alloy			Copper alloy			Copper alloy		
Contact Plating	Sn Plated			Sn Plated			Sn Plated		
Dimension (L/H/Thickness)	72.4mm/35.4mm/4.2mm			72.4mm/35.4mm/5.2mm			87.4mm/35.4mm/6.2mm		
Stripped Length	.315"~.394" (8-10mm)			.315"~.394" (8-10mm)			.315"~.394" (8-10mm)		

REB-A4X-XX

Spring Cage Terminal Block

ISULATOR COLOR	
YG	Yellow Green

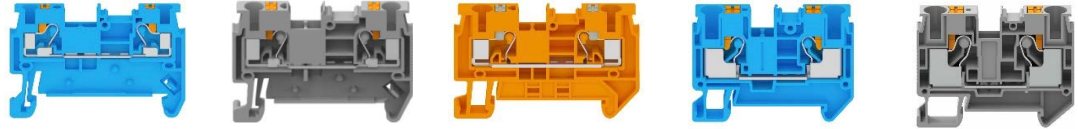


P/N	REB-A4A-YG			REB-A4B-YG			REB-A4C-YG		
CIRCUIT DIAGRAM	2 in 2 out			2 in 2 out			2 in 2 out		
TECHNICAL DATA (UL 1059)									
User Group	B	C	D	B	C	D	B	C	D
Rated Voltage [V]	/	/	/	/	/	/	/	/	/
Rated Current [A]	/	/	/	/	/	/	/	/	/
TECHNICAL DATA (IEC 60947-7-1)									
Rated Voltage [V]	/			/			/		
Rated Current [A]	/			/			/		
Solid (Cross Sectional Area Wire Range)	24~16 AWG / 0.2~1.5mm ²			24~12 AWG / 0.2~4.0mm ²			24~10 AWG / 0.2~6.0mm ²		
Stranded (Cross Sectional Area Wire Range)	24~16 AWG / 0.2~1.5mm ²			24~14 AWG / 0.2~2.5mm ²			24~12 AWG / 0.2~4.0mm ²		
Overtoltage Category	III			III			III		
Degree of Pollution	3			3			3		
Impulse Withstand Voltage	6KV			8KV			8KV		
MATERIAL									
Insulation Material	PA66			PA66			PA66		
Flammability Rating	UL94V-0			UL94V-0			UL94V-0		
Contact Material	Copper alloy			Copper alloy			Copper alloy		
Contact Plating	Sn Plated			Sn Plated			Sn Plated		
Dimension (L/H/Thickness)	72.4mm/35.4mm/4.2mm			72.4mm/35.4mm/5.2mm			87.4mm/35.4mm/6.2mm		
Stripped Length	.315"~.394" (8-10mm)			.315"~.394" (8-10mm)			.315"~.394" (8-10mm)		

REB-B2X-XX

Push-In Terminal Block

ISULATOR COLOR	
OR	Orange
BU	Blue
GY	Gray



P/N	REB-B2A-XX			REB-B2B-XX			REB-B2C-XX			REB-B2D-XX			REB-B2E-XX		
CIRCUIT DIAGRAM	1 in out		1 in out		1 in out		1 in out		1 in out		1 in out		1 in out		
TECHNICAL DATA (UL 1059)															
User Group	B	C	D	B	C	D	B	C	D	B	C	D	B	C	D
Rated Voltage [V]	300	300	600	600	600	600	600	600	600	600	600	600	600	600	600
Rated Current [A]	15	15	5	20	20	5	30	30	5	50	50	5	55	55	5
TECHNICAL DATA (IEC 60947-7-1)															
Rated Voltage [V]	500			800			800			1000			1000		
Rated Current [A]	17.5			24			32			41			57		
Solid (Cross Sectional Area Wire Range)	24~16 AWG / 0.2~1.5mm ²			24~12 AWG / 0.2~4.0mm ²			24~10 AWG / 0.2~6.0mm ²			20~8 AWG / 0.5~10.0mm ²			20~6 AWG / 0.5~16.0mm ²		
Stranded (Cross Sectional Area Wire Range)	24~16 AWG / 0.2~1.5mm ²			24~14 AWG / 0.2~2.5mm ²			24~12 AWG / 0.2~4.0mm ²			20~10 AWG / 0.5~6.0mm ²			20~8 AWG / 0.5~10.0mm ²		
Overvoltage Category	III			III			III			III			III		
Degree of Pollution	3			3			3			3			3		
Impulse Withstand Voltage	6KV			8KV			8KV			8KV			8KV		
MATERIAL															
Insulation Material	PA66			PA66			PA66			PA66			PA66		
Flammability Rating	UL94V-0			UL94V-0			UL94V-0			UL94V-0			UL94V-0		
Contact Material	Copper alloy			Copper alloy			Copper alloy			Copper alloy			Copper alloy		
Contact Plating	Sn Plated			Sn Plated			Sn Plated			Sn Plated			Sn Plated		
Dimension (L/H/Thickness)	45mm/30.6mm /3.5mm			48.6mm/35.2mm /5.2mm			55.9mm/35.2mm /6.2mm			57.8mm/42.3mm /8.2mm			67.9mm/49.7mm /10.2mm		
Stripped Length	.315"~.394" (8-10mm)			.315"~.394" (8-10mm)			.394"~.472" (10-12mm)			.394"~.472" (10-12mm)			.709" (18mm)		

REB-B2X-XX

Push-In Terminal Block

ISULATOR COLOR	
YG	Yellow Green

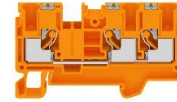


P/N	REB-B2A-YG			REB-B2B-YG			REB-B2C-YG			REB-B2D-YG			REB-B2E-YG		
CIRCUIT DIAGRAM	1 in out		1 in out		1 in out		1 in out		1 in out		1 in out		1 in out		
TECHNICAL DATA (UL 1059)															
User Group	B	C	D	B	C	D	B	C	D	B	C	D	B	C	D
Rated Voltage [V]	/	/	/	/	/	/	/	/	/	/	/	/	/	/	/
Rated Current [A]	/	/	/	/	/	/	/	/	/	/	/	/	/	/	/
TECHNICAL DATA (IEC 60947-7-1)															
Rated Voltage [V]	/			/			/			/			/		
Rated Current [A]	/			/			/			/			/		
Solid (Cross Sectional Area Wire Range)	24~16 AWG / 0.2~1.5mm ²			24~12 AWG / 0.2~4.0mm ²			24~10 AWG / 0.2~6.0mm ²			20~8 AWG / 0.5~10.0mm ²			20~6 AWG / 0.5~16.0mm ²		
Stranded (Cross Sectional Area Wire Range)	24~16 AWG / 0.2~1.5mm ²			24~14 AWG / 0.2~2.5mm ²			24~12 AWG / 0.2~4.0mm ²			20~10 AWG / 0.5~6.0mm ²			20~8 AWG / 0.5~10.0mm ²		
Overvoltage Category	III			III			III			III			III		
Degree of Pollution	3			3			3			3			3		
Impulse Withstand Voltage	6KV			8KV			8KV			8KV			8KV		
MATERIAL															
Insulation Material	PA66			PA66			PA66			PA66			PA66		
Flammability Rating	UL94V-0			UL94V-0			UL94V-0			UL94V-0			UL94V-0		
Contact Material	Copper alloy			Copper alloy			Copper alloy			Copper alloy			Copper alloy		
Contact Plating	Sn Plated			Sn Plated			Sn Plated			Sn Plated			Sn Plated		
Dimension (L/H/Thickness)	45mm/30.6mm /3.5mm			48.6mm/35.2mm /5.2mm			55.9mm/35.2mm /6.2mm			57.8mm/42.3mm /8.2mm			67.9mm/49.7mm /10.2mm		
Stripped Length	.315"~.394" (8-10mm)			.315"~.394" (8-10mm)			.394"~.472" (10-12mm)			.394"~.472" (10-12mm)			.709" (18mm)		

REB-B3X-XX

Push-In Terminal Block

ISULATOR COLOR	
OR	Orange
BU	Blue
GY	Gray



P/N	REB-B3A-XX			REB-B3B-XX			REB-B3C-XX			REB-B3D-XX			REB-B3E-XX		
CIRCUIT DIAGRAM	1 in 2 out			1 in 2 out			1 in 2 out			1 in 2 out			1 in 2 out		
TECHNICAL DATA (UL 1059)															
User Group	B	C	D	B	C	D	B	C	D	B	C	D	B	C	D
Rated Voltage [V]	300	300	600	600	600	600	600	600	600	600	600	600	600	600	600
Rated Current [A]	15	15	5	20	20	5	30	30	5	40	40	5	60	60	5
TECHNICAL DATA (IEC 60947-7-1)															
Rated Voltage [V]	500			800			800			1000			1000		
Rated Current [A]	17.5			24			32			41			57		
Solid (Cross Sectional Area Wire Range)	24~16 AWG / 0.2~1.5mm ²			24~12 AWG / 0.2~4.0mm ²			24~10 AWG / 0.2~6.0mm ²			20~8 AWG / 0.5~10.0mm ²			20~6 AWG / 0.5~16.0mm ²		
Stranded (Cross Sectional Area Wire Range)	24~16 AWG / 0.2~1.5mm ²			24~14 AWG / 0.2~2.5mm ²			24~12 AWG / 0.2~4.0mm ²			20~10 AWG / 0.5~6.0mm ²			20~8 AWG / 0.5~10.0mm ²		
Overvoltage Category	III			III			III			III			III		
Degree of Pollution	3			3			3			3			3		
Impulse Withstand Voltage	6KV			8KV			8KV			8KV			8KV		
MATERIAL															
Insulation Material	PA66			PA66			PA66			PA66			PA66		
Flammability Rating	UL94V-0			UL94V-0			UL94V-0			UL94V-0			UL94V-0		
Contact Material	Copper alloy			Copper alloy			Copper alloy			Copper alloy			Copper alloy		
Contact Plating	Sn Plated			Sn Plated			Sn Plated			Sn Plated			Sn Plated		
Dimension (L/H/Thickness)	54.2mm/30.6mm /3.5mm			60.6mm/35.3mm /5.2mm			66.6mm/35.3mm /6.2mm			74.2mm/42.3mm /8.2mm			74.2mm/42.3mm /8.2mm		
Stripped Length	.315"~.394" (8-10mm)			.315"~.394" (8-10mm)			.394"~.472" (10-12mm)			.394"~.472" (10-12mm)			.709" (18mm)		

REB-B3X-XX

Push-In Terminal Block

ISULATOR COLOR	
YG	Yellow Green



P/N	REB-B3A-YG			REB-B3B-YG			REB-B3C-YG			REB-B3D-YG			REB-B3E-YG		
CIRCUIT DIAGRAM	1 in 2 out			1 in 2 out			1 in 2 out			1 in 2 out			1 in 2 out		
TECHNICAL DATA (UL 1059)															
User Group	B	C	D	B	C	D	B	C	D	B	C	D	B	C	D
Rated Voltage [V]	/	/	/	/	/	/	/	/	/	/	/	/	/	/	/
Rated Current [A]	/	/	/	/	/	/	/	/	/	/	/	/	/	/	/
TECHNICAL DATA (IEC 60947-7-1)															
Rated Voltage [V]	/			/			/			/			/		
Rated Current [A]	/			/			/			/			/		
Solid (Cross Sectional Area Wire Range)	24~16 AWG / 0.2~1.5mm ²			24~12 AWG / 0.2~4.0mm ²			24~10 AWG / 0.2~6.0mm ²			20~8 AWG / 0.5~10.0mm ²			20~6 AWG / 0.5~16.0mm ²		
Stranded (Cross Sectional Area Wire Range)	24~16 AWG / 0.2~1.5mm ²			24~14 AWG / 0.2~2.5mm ²			24~12 AWG / 0.2~4.0mm ²			20~10 AWG / 0.5~6.0mm ²			20~8 AWG / 0.5~10.0mm ²		
Overtoltage Category	III			III			III			III			III		
Degree of Pullution	3			3			3			3			3		
Impulse Withstand Voltage	6KV			8KV			8KV			8KV			8KV		
MATERIAL															
Insulation Material	PA66			PA66			PA66			PA66			PA66		
Flammability Rating	UL94V-0			UL94V-0			UL94V-0			UL94V-0			UL94V-0		
Contact Material	Copper alloy			Copper alloy			Copper alloy			Copper alloy			Copper alloy		
Contact Plating	Sn Plated			Sn Plated			Sn Plated			Sn Plated			Sn Plated		
Dimension (L/H/Thickness)	54.2mm/30.6mm /3.5mm			60.6mm/35.3mm /5.2mm			66.6mm/35.3mm /6.2mm			74.2mm/42.3mm /8.2mm			89.2mm/49.7mm /10.2mm		
Stripped Length	.315"~.394" (8-10mm)			.315"~.394" (8-10mm)			.394"~.472" (10-12mm)			.394"~.472" (10-12mm)			.709" (18mm)		

REB-B4X-XX

Push-In Terminal Block

ISULATOR COLOR	
OR	Orange
BU	Blue
GY	Gray



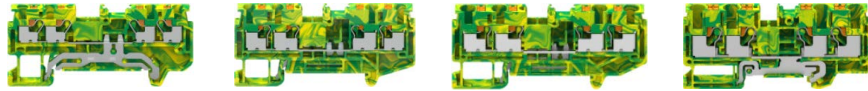
P/N	REB-B4A-XX			REB-B4B-XX			REB-B4C-XX			REB-B4D-XX		
CIRCUIT DIAGRAM	2 in 2 out			2 in 2 out			2 in 2 out			2 in 2 out		
TECHNICAL DATA (UL 1059)												
User Group	B	C	D	B	C	D	B	C	D	B	C	D
Rated Voltage [V]	300	300	600	600	600	600	600	600	600	600	600	600
Rated Current [A]	15	15	5	20	20	5	30	30	5	40	40	5
TECHNICAL DATA (IEC 60947-7-1)												
Rated Voltage [V]	500			800			800			1000		
Rated Current [A]	17.5			24			32			41		
Solid (Cross Sectional Area Wire Range)	24~16 AWG / 0.2~1.5mm ²			24~12 AWG / 0.2~4.0mm ²			24~10 AWG / 0.2~6.0mm ²			20~8 AWG / 0.5~10.0mm ²		
Stranded (Cross Sectional Area Wire Range)	24~16 AWG / 0.2~1.5mm ²			24~14 AWG / 0.2~2.5mm ²			24~12 AWG / 0.2~4.0mm ²			20~10 AWG / 0.5~6.0mm ²		
Overvoltage Category	III			III			III			III		
Degree of Pollution	3			3			3			3		
Impulse Withstand Voltage	6KV			8KV			8KV			8KV		
MATERIAL												
Insulation Material	PA66			PA66			PA66			PA66		
Flammability Rating	UL94V-0			UL94V-0			UL94V-0			UL94V-0		
Contact Material	Copper alloy			Copper alloy			Copper alloy			Copper alloy		
Contact Plating	Sn Plated			Sn Plated			Sn Plated			Sn Plated		
Dimension (L/H/Thickness)	63.3mm/30.6mm /3.5mm			72.3mm/35.3mm /5.2mm			77.0mm/35.3mm /6.2mm			90.6mm/42.3mm /8.2mm		
Stripped Length	.315"~.394" (8-10mm)			.315"~.394" (8-10mm)			.394"~.472" (10-12mm)			.394"~.472" (10-12mm)		

REB-B4X-XX

Push-In Terminal Block

ISULATOR COLOR

YG	Yellow Green
----	-----------------

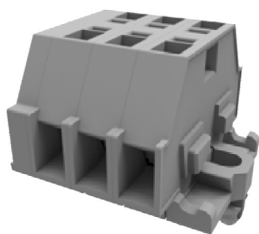


P/N	REB-B4A-YG			REB-B4B-YG			REB-B4C-YG			REB-B4D-YG		
CIRCUIT DIAGRAM	2 in 2 out			2 in 2 out			2 in 2 out			2 in 2 out		
TECHNICAL DATA (UL 1059)												
User Group	B	C	D	B	C	D	B	C	D	B	C	D
Rated Voltage [V]	/	/	/	/	/	/	/	/	/	/	/	/
Rated Current [A]	/	/	/	/	/	/	/	/	/	/	/	/
TECHNICAL DATA (IEC 60947-7-1)												
Rated Voltage [V]	/			/			/			/		
Rated Current [A]	/			/			/			/		
Solid (Cross Sectional Area Wire Range)	24~16 AWG / 0.2~1.5mm ²			24~12 AWG / 0.2~4.0mm ²			24~10 AWG / 0.2~6.0mm ²			20~8 AWG / 0.5~10.0mm ²		
Stranded (Cross Sectional Area Wire Range)	24~16 AWG / 0.2~1.5mm ²			24~14 AWG / 0.2~2.5mm ²			24~12 AWG / 0.2~4.0mm ²			20~10 AWG / 0.5~6.0mm ²		
Oversvoltage Category	III			III			III			III		
Degree of Pollution	3			3			3			3		
Impulse Withstand Voltage	6KV			8KV			8KV			8KV		
MATERIAL												
Insulation Material	PA66			PA66			PA66			PA66		
Flammability Rating	UL94V-0			UL94V-0			UL94V-0			UL94V-0		
Contact Material	Copper alloy			Copper alloy			Copper alloy			Copper alloy		
Contact Plating	Sn Plated			Sn Plated			Sn Plated			Sn Plated		
Dimension (L/H/Thickness)	63.3mm/30.6mm /3.5mm			72.3mm/35.3mm/ 5.2mm			77.0mm/35.3mm /6.2mm			90.6mm/42.3mm /8.2mm		
Stripped Length	.315"~.394" (8-10mm)			.315"~.394" (8-10mm)			.394"~.472" (10-12mm)			.394"~.472" (10-12mm)		

REB-XX-CAX-00X Micro Spring Cage Terminal Block

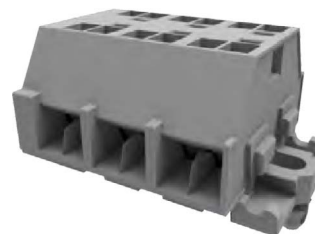
REB-XX-CAA-001

1 in 1 out



REB-XX-CAD-001

2 in 2 out



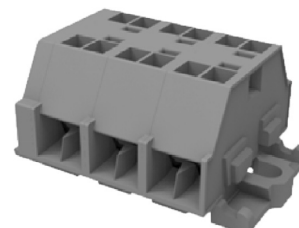
REB-XX-CAA-002

1 in 1 out



REB-XX-CAD-002

2 in 2 out

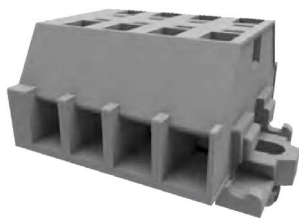


P/N	REB-XX-CAA-001 REB-XX-CAA-002	REB-XX-CAD-001 REB-XX-CAD-002	
CIRCUIT DIAGRAM	1 in 1 out	2 in 2 out	
TECHNICAL DATA (UL 1059)			
User Group	B	C	D
Rated Voltage [V]	300	300	600
Rated Current [A]	10	10	5
TECHNICAL DATA (IEC)			
Rated Voltage [V]	400		
Rated Current [A]	18		
Solid and Stranded (Cross Sectional Area Wire Range)	28~16 AWG / 0.2~1.5mm ²		
Overvoltage Category	III		
Degree of Pollution	3		
Impulse Withstand Voltage	6KV		
MATERIAL			
Insulation Material	PA66		
Flammability Rating	UL94V-0		
Contact Material	Copper alloy		
Contact Plating	Sn Plated		
Stripped Length	.315"~.354" (8-9mm)		

REB-XX-CBX-00X Micro Spring Cage Terminal Block

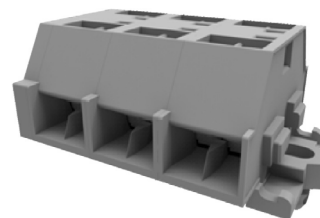
REB-XX-CBB-001

1 in 1 out



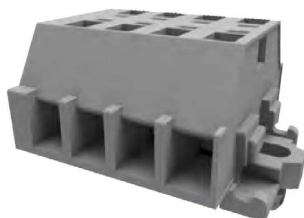
REB-XX-CBE-001

2 in 2 out



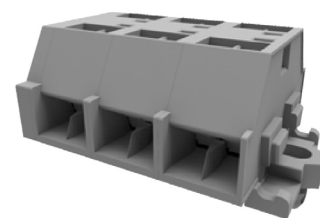
REB-XX-CBB-002

1 in 1 out



REB-XX-CBE-002

2 in 2 out

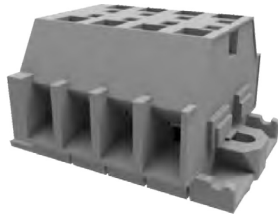


P/N	REB-XX-CBB-001 REB-XX-CBB-002	REB-XX-CBE-001 REB-XX-CBE-002	
CIRCUIT DIAGRAM	1 in 1 out	2 in 2 out	
TECHNICAL DATA (UL 1059)			
User Group	B	C	D
Rated Voltage [V]	300	300	600
Rated Current [A]	15	15	5
TECHNICAL DATA (IEC)			
Rated Voltage [V]	500		
Rated Current [A]	24		
Solid and Stranded (Cross Sectional Area Wire Range)	28~14 AWG / 0.2~2.5mm ²		
Overvoltage Category	III		
Degree of Pollution	3		
Impulse Withstand Voltage	6KV		
MATERIAL			
Insulation Material	PA66		
Flammability Rating	UL94V-0		
Contact Material	Copper alloy		
Contact Plating	Sn Plated		
Stripped Length	.315"~.354" (8-9mm)		

REB-XX-CCX-00X Micro Spring Cage Terminal Block

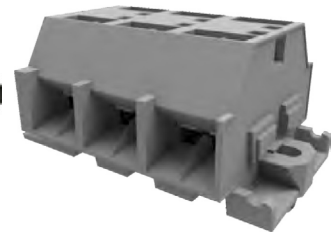
REB-XX-CCC-001

1 in 1 out



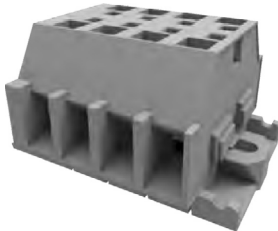
REB-XX-CCF-001

2 in 2 out



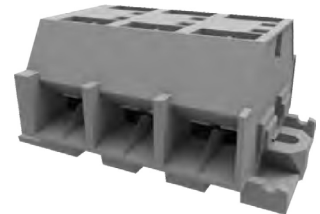
REB-XX-CCC-002

1 in 1 out



REB-XX-CCF-002

2 in 2 out



P/N	REB-XX-CCC-001 REB-XX-CCC-002	REB-XX-CCF-001 REB-XX-CCF-002
CIRCUIT DIAGRAM	1 in 1 out	2 in 2 out
TECHNICAL DATA (UL 1059)		
User Group	B	C D
Rated Voltage [V]	300	300 600
Rated Current [A]	20	20 5
TECHNICAL DATA (IEC)		
Rated Voltage [V]	630	
Rated Current [A]	24	
Solid and Stranded (Cross Sectional Area Wire Range)	28~12 AWG / 0.2~4.0mm ²	
Overvoltage Category	III	
Degree of Pollution	3	
Impulse Withstand Voltage	6KV	
MATERIAL		
Insulation Material	PA66	
Flammability Rating	UL94V-0	
Contact Material	Copper alloy	
Contact Plating	Sn Plated	
Stripped Length	.354" ~ .394" (9-10mm)	

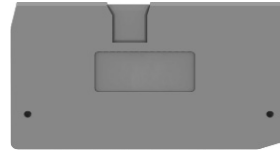
End Covers/Caps

REB-A2D-CAP



INSULATION MATERIAL	PA66
FLAMMABILITY RATING	UL94V-0
LENGTH	69.5mm
HEIGHT	36.0mm
THICKNESS	2.2mm

REB-A2E-CAP



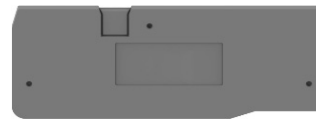
INSULATION MATERIAL	PA66
FLAMMABILITY RATING	UL94V-0
LENGTH	71.5mm
HEIGHT	42.9mm
THICKNESS	2.2mm

REB-A3C-CAP



INSULATION MATERIAL	PA66
FLAMMABILITY RATING	UL94V-0
LENGTH	71.7mm
HEIGHT	29.4mm
THICKNESS	2.2mm

REB-A3D-CAP



INSULATION MATERIAL	PA66
FLAMMABILITY RATING	UL94V-0
LENGTH	90.5mm
HEIGHT	36.0mm
THICKNESS	2.2mm

REB-A3E-CAP



INSULATION MATERIAL	PA66
FLAMMABILITY RATING	UL94V-0
LENGTH	95.5mm
HEIGHT	42.9mm
THICKNESS	2.2mm

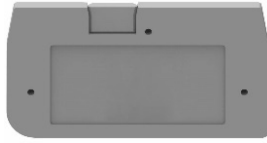
REB-A4C-CAP



INSULATION MATERIAL	PA66
FLAMMABILITY RATING	UL94V-0
LENGTH	87.4mm
HEIGHT	29.4mm
THICKNESS	2.2mm

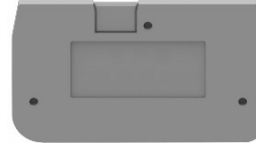
End Covers/Caps

REB-B2A-CAP



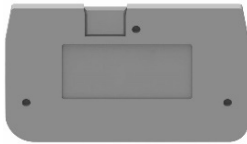
INSULATION MATERIAL	PA66
FLAMMABILITY RATING	UL94V-0
LENGTH	45.0mm
HEIGHT	24.6mm
THICKNESS	2.2mm

REB-B2B-CAP



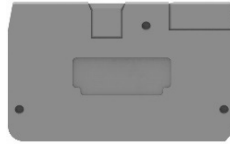
INSULATION MATERIAL	PA66
FLAMMABILITY RATING	UL94V-0
LENGTH	48.6mm
HEIGHT	29.2mm
THICKNESS	2.2mm

REB-B2C-CAP



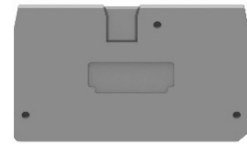
INSULATION MATERIAL	PA66
FLAMMABILITY RATING	UL94V-0
LENGTH	55.9mm
HEIGHT	29.2mm
THICKNESS	2.2mm

REB-B2D-CAP



INSULATION MATERIAL	PA66
FLAMMABILITY RATING	UL94V-0
LENGTH	57.8mm
HEIGHT	36.2mm
THICKNESS	2.2mm

REB-B2E-CAP



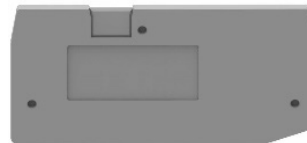
INSULATION MATERIAL	PA66
FLAMMABILITY RATING	UL94V-0
LENGTH	67.9mm
HEIGHT	42.7mm
THICKNESS	2.2mm

REB-B3A-CAP



INSULATION MATERIAL	PA66
FLAMMABILITY RATING	UL94V-0
LENGTH	54.2mm
HEIGHT	24.6mm
THICKNESS	2.2mm

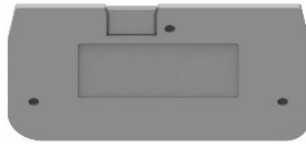
REB-B3B-CAP



INSULATION MATERIAL	PA66
FLAMMABILITY RATING	UL94V-0
LENGTH	60.6mm
HEIGHT	29.2mm
THICKNESS	2.2mm

End Covers/Caps

REB-B3C-CAP



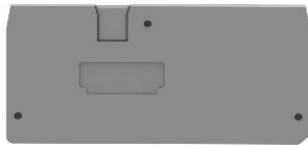
INSULATION MATERIAL	PA66
FLAMMABILITY RATING	UL94V-0
LENGTH	66.6mm
HEIGHT	29.3mm
THICKNESS	2.2mm

REB-B3D-CAP



INSULATION MATERIAL	PA66
FLAMMABILITY RATING	UL94V-0
LENGTH	74.2mm
HEIGHT	36.2mm
THICKNESS	2.2mm

REB-B3E-CAP



INSULATION MATERIAL	PA66
FLAMMABILITY RATING	UL94V-0
LENGTH	89.2mm
HEIGHT	42.7mm
THICKNESS	2.2mm

REB-B4A-CAP



INSULATION MATERIAL	PA66
FLAMMABILITY RATING	UL94V-0
LENGTH	63.6mm
HEIGHT	24.6mm
THICKNESS	2.2mm

REB-B4B-CAP



INSULATION MATERIAL	PA66
FLAMMABILITY RATING	UL94V-0
LENGTH	72.3mm
HEIGHT	29.3mm
THICKNESS	2.2mm

REB-B4C-CAP



INSULATION MATERIAL	PA66
FLAMMABILITY RATING	UL94V-0
LENGTH	77.0mm
HEIGHT	29.3mm
THICKNESS	2.2mm

REB-B4D-CAP



INSULATION MATERIAL	PA66
FLAMMABILITY RATING	UL94V-0
LENGTH	90.6mm
HEIGHT	36.2mm
THICKNESS	2.2mm



To contact us, scan the QR
code to reach our website
inquiry form.

adam-tech.com

Created: Jan-2025