

ADAM TECH



POWER LINE FILTERS

Adam Tech's EMI/RFI Power Line Filters are designed to block the incoming and outgoing interference of high-frequency signals. This allows devices to run without interruption. This broad product line offers a voltage rating of 115/250VAC, and current ratings ranging from 1A to 20A. A variety of options are available, including outline, mounting, termination, and switches.

FEATURES AND BENEFITS:

- Line filter type
- Flanged panel or chassis mount
- 115/250VAC voltage rating
- Current ratings ranging from 1 to 20 Amps
- Fused option
- Switch option
- Various termination options including quick connect, wire leads, terminal block, and screw
- Ideal for switching power supplies
- Prevents electromagnetic interference signals from reaching the input power line or the equipment
- UL Recognized

APPLICATIONS:

- Industrial
- Medical
- Consumer goods
- Computer and networking equipment
- Test and measurement equipment
- Switching power supplies

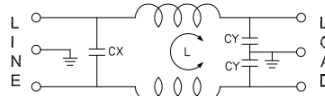


The products displayed in this brochure represent the various types of Power Line Filters Adam Tech has to offer. Each part is available in other variations, such as with different current ratings and fuse options. Additional **medical grade** filters are also available. Please contact us with any inquiries.

PLF-11A1-6A-Q



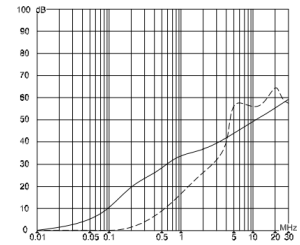
IEC Inlet Socket
QD Terminals, Flange Mount
115/250VAC, 6A



L:2x0.8mH
Cx:0.1uF(X2)
Cy:3300pF(Y2)

[VIEW FULL DATASHEET](#)

INSERTION LOSS



— Common Mode
- - - Differential Mode

PLF-11A1-10A-Q



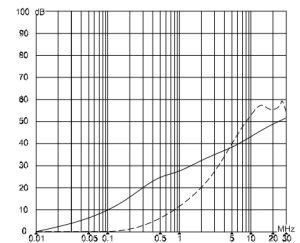
IEC Inlet Socket
QD Terminals, Flange Mount
115/250VAC, 10A



L:2x0.3mH
Cx:0.1uF(X2)
Cy:3300pF(Y2)

[VIEW FULL DATASHEET](#)

INSERTION LOSS

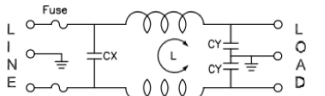


— Common Mode
- - - Differential Mode

PLF-11B2-6A-Q-R5



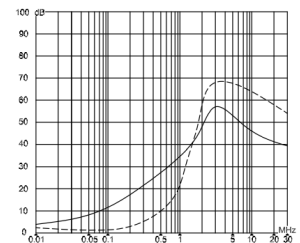
Medical Grade
Fused IEC Inlet Socket
QD Terminals, Flange Mount
115/250VAC, 6A



L:2x0.3mH
Cx:0.1uF(X2)
Cy:3300pF(Y2)*2

[VIEW FULL DATASHEET](#)

INSERTION LOSS

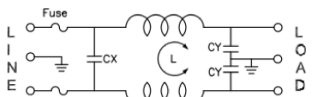


— Common Mode
- - - Differential Mode

PLF-11B2-10A-Q



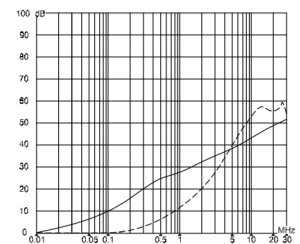
Fused IEC Inlet Socket
QD Terminals, Flange Mount
115/250VAC, 10A



L:2x0.3mH
Cx:0.1uF(X2)
Cy:3300pF(Y2)*2

[VIEW FULL DATASHEET](#)

INSERTION LOSS

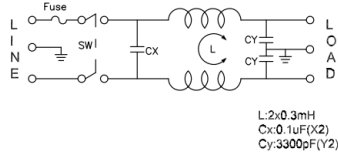


— Common Mode
- - - Differential Mode

PLF-11C1-10A-Q

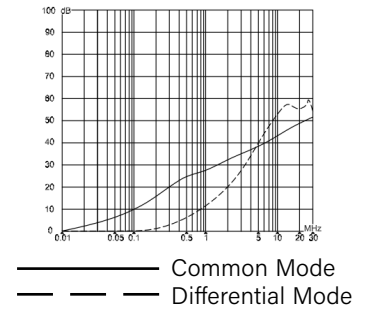


Power Entry Module
Fuse and Switch
Horizontal Flange Mount
115/250VAC, 10A



[VIEW FULL DATASHEET](#)

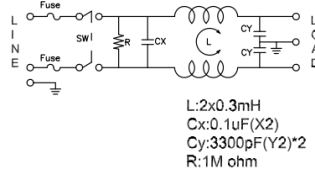
INSERTION LOSS



PLF-11C4-10A-Q-R

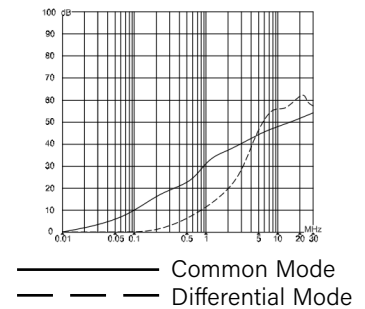


Power Entry Module
Fuse and Switch
Vertical Flange Mount
115/250VAC, 10A



[VIEW FULL DATASHEET](#)

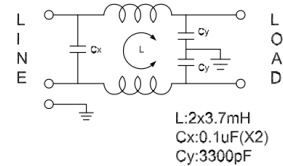
INSERTION LOSS



PLF-11E1-1A-W

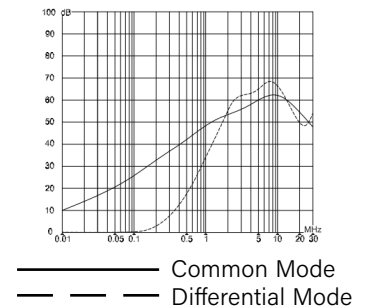


Medium Performance
Wire Leads w/ Ring Terminal
Chassis Mount
115/250VAC, 1A

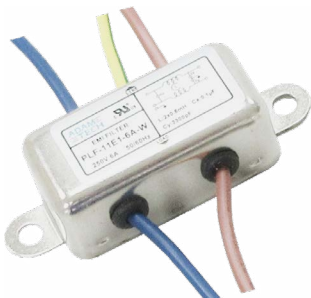


[VIEW FULL DATASHEET](#)

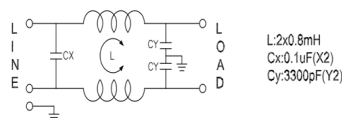
INSERTION LOSS



PLF-11E1-6A-W

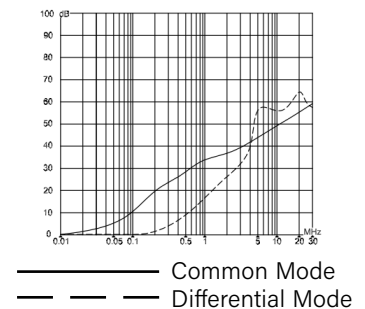


Medium Performance
Wire Leads, Chassis Mount
115/250VAC, 6A

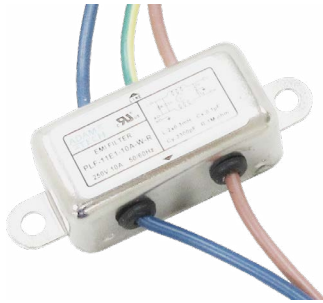


[VIEW FULL DATASHEET](#)

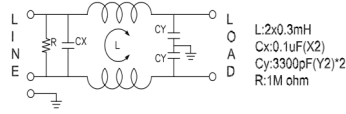
INSERTION LOSS



PLF-11E1-10A-W-R

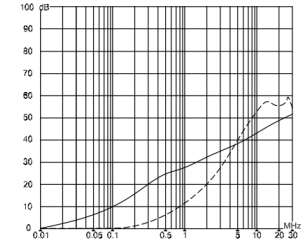


Medium Performance
Wire Leads, Chassis Mount
115/250VAC, 10A



L: 2x0.3mH
Cx: 0.1uF(X2)
Cy: 3300pF(Y2)*2
R: 1M ohm

INSERTION LOSS



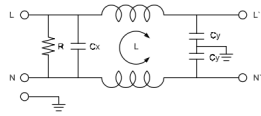
— Common Mode
- - - Differential Mode

[VIEW FULL DATASHEET](#)

PLF-11E3-6A-Q-R

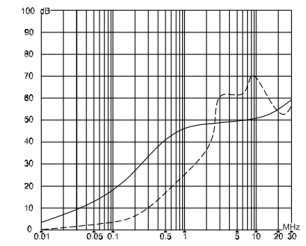


Medium Performance
QD Terminals, Chassis Mount
115/250VAC, 6A



L: 2x1.8mH
Cx: 0.1uF(X2)
Cy: 3300pF(Y2)
R: 1.0M ohm

INSERTION LOSS



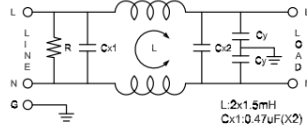
— Common Mode
- - - Differential Mode

[VIEW FULL DATASHEET](#)

PLF-12D2-3A-Q-R

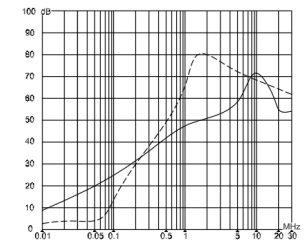


Medium Performance
QD Terminals, Chassis Mount
115/250VAC, 3A



L: 2x1.8mH
Cx1: 0.47uF(X2)
Cx2: 0.86uF(X2)
Cy: 2200pF(Y2)*2
R: 2.2M ohm

INSERTION LOSS



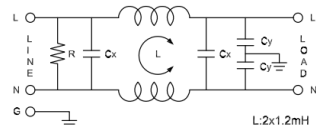
— Common Mode
- - - Differential Mode

[VIEW FULL DATASHEET](#)

PLF-12D2-10A-Q-R

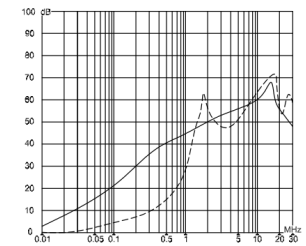


Medium Performance
QD Terminals, Chassis Mount
115/250VAC, 10A



L: 2x1.2mH
Cx: 0.1uF(X2)
Cy: 3300pF(Y2)*2
R: 1M ohm

INSERTION LOSS



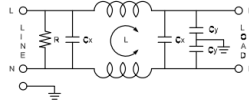
— Common Mode
- - - Differential Mode

[VIEW FULL DATASHEET](#)

PLF-12D4-20A-Q-R



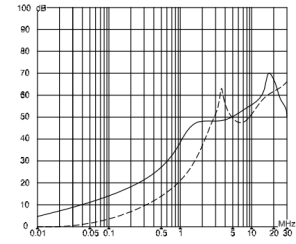
Medium Performance
QD Terminals, Chassis Mount
115/250VAC, 20A



L: 2x0.9mH
Cx: 0.1uF(X2)
Cy: 3300pF(Y2)
R: 2.2M ohm

[VIEW FULL DATASHEET](#)

INSERTION LOSS

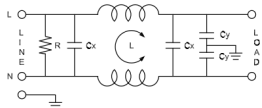


— Common Mode
- - - Differential Mode

PLF-12E4-10A-Q-R



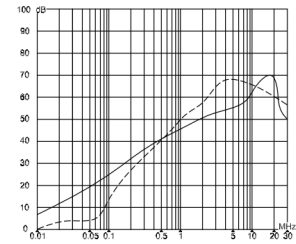
Medium Performance
QD Terminals, Chassis Mount
115/250VAC, 10A



L: 2x1.2mH
Cx: 0.22uF(X2)
Cy: 3300pF(Y2)
R: 2.2M ohm

[VIEW FULL DATASHEET](#)

INSERTION LOSS

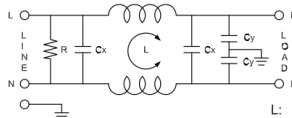


— Common Mode
- - - Differential Mode

PLF-12E4-20A-S-R



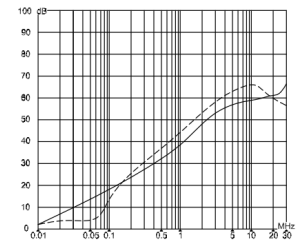
Medium Performance
Screw Terminals, Chassis Mount
115/250VAC, 20A



L: 2x0.7mH
Cx: 0.22uF(X2)
Cy: 3300pF(Y2)
R: 2.2M ohm

[VIEW FULL DATASHEET](#)

INSERTION LOSS

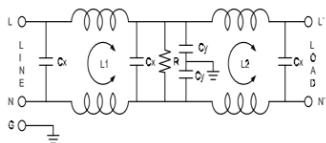


— Common Mode
- - - Differential Mode

PLF-21D3-10A-Q



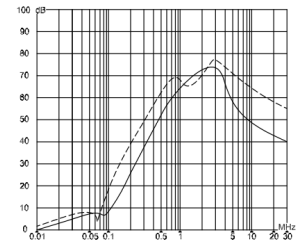
High Performance, Dual Stage
QD Terminals, Chassis Mount
115/250VAC, 10A



L1/2: 2x0.6mH
Cx: 0.1uF(X2)
Cy: 4700pF(Y2)*2
R: 2.2M ohm

[VIEW FULL DATASHEET](#)

INSERTION LOSS

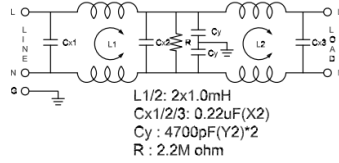


— Common Mode
- - - Differential Mode

PLF-21D5-20A-T

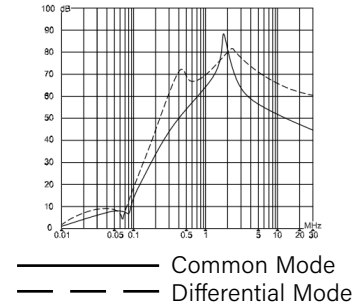


High Performance, Dual Stage
Terminal Block, Chassis Mount
115/250VAC, 20A



[VIEW FULL DATASHEET](#)

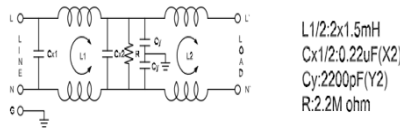
INSERTION LOSS



PLF-22D1-6A-W

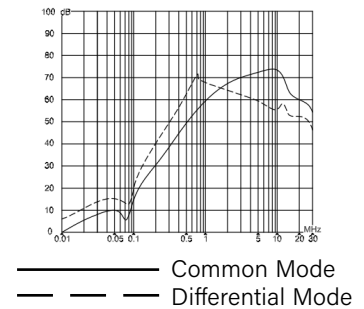


High Performance, Dual Stage
Wire Leads, Chassis Mount
115/250VAC, 6A



[VIEW FULL DATASHEET](#)

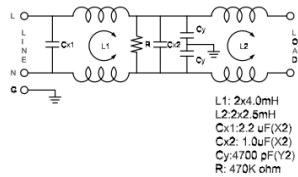
INSERTION LOSS



PLF-22D6-20A-Q

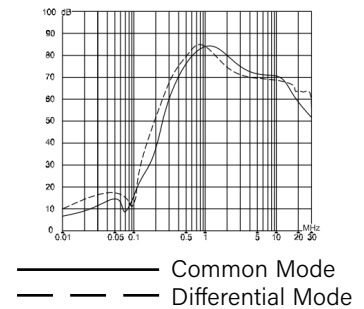


High Performance, Dual Stage
QD Terminals, Chassis Mount
115/250VAC, 20A



[VIEW FULL DATASHEET](#)

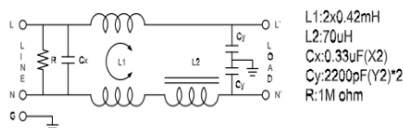
INSERTION LOSS



PLF-27D1-3A-W

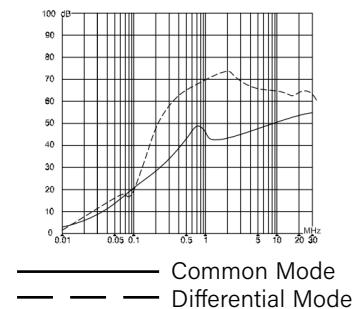


High Performance, Dual Stage
Wire Leads, Chassis Mount
115/250VAC, 3A



[VIEW FULL DATASHEET](#)

INSERTION LOSS





To contact us, scan the QR
code to reach our website
inquiry form.

adam-tech.com

Created: Sep-2023
Last Revised: Sep-2024

CONFIDENTIAL AND PROPRIETARY

© Adam Tech. All rights reserved. This document contains confidential and proprietary information belonging to Adam Tech. It is provided solely for design and reference purposes by authorized parties. Any reproduction, distribution, display, or disclosure to third parties, in whole or in part, without the prior written consent of Adam Tech, is strictly prohibited. Adam Tech retains all rights, including copyright, trademark, trade secret, and all other intellectual property rights worldwide.