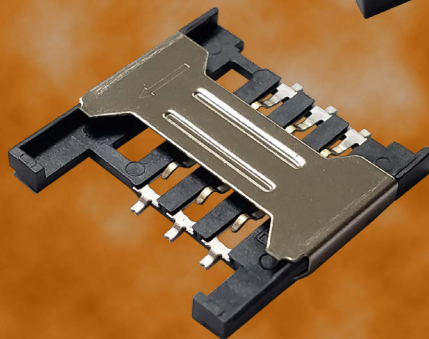
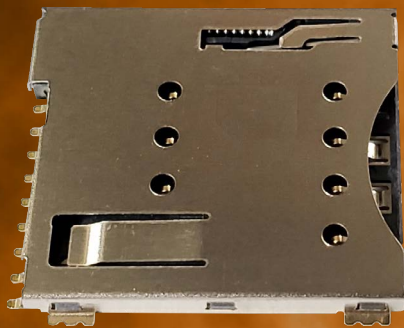
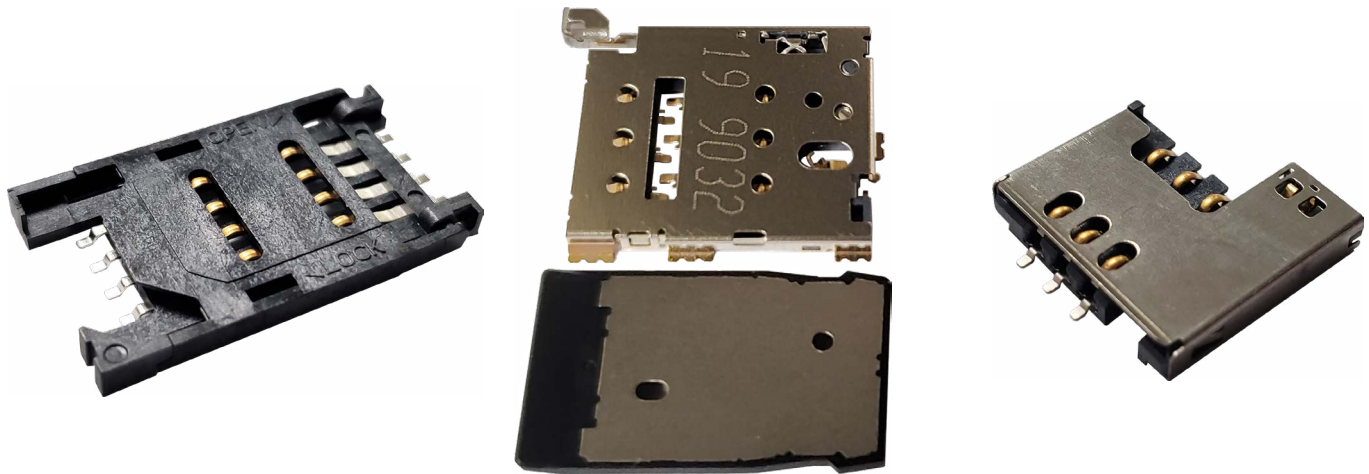


# ADAME TECH



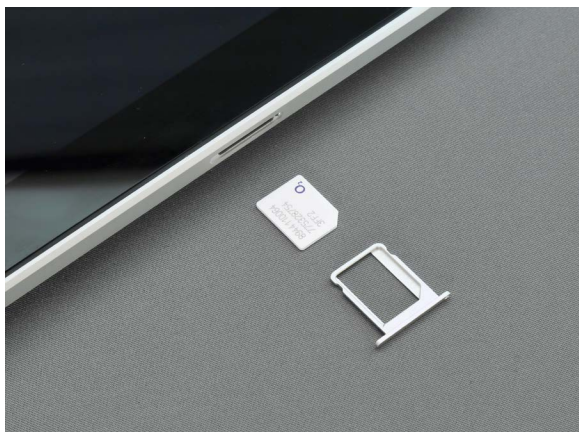
SIM CARD CONNECTORS



Adam Tech's SIM (Subscriber Identification Module) Card Connector series offers a wide range of SIM, Micro SIM, and Nano SIM card connectors. These reliable, low profile connectors provide the necessary gateway between SIM cards and mobile devices. They are available in a variety of insertion and removal methods including hinged cover, push in-pull out, and push in-push out.

#### APPLICATIONS:

- Mobile phones
- Satellite phones
- Smart watches
- Cameras
- Tablets
- Personal computers



#### FEATURES AND BENEFITS:

- Compatible with any SIM card size
- Multiple styles
- Variety of insertion, removal methods
- High temperature thermoplastic insulator
- Operating temperature: -40°C to +85°C
- Tape & reel packaging
- RoHS compliant

#### SPECIFICATIONS:

##### Material:

Insulator: Hi-temp thermoplastic, rated UL 94V-0  
 Insulator color: Black or white  
 Contacts: Copper alloy, corson alloy, or phosphor bronze  
 Shell: Stainless steel

##### Plating:

Overall: Gold flash over nickel underplate

##### Electrical:

Voltage rating range: 10 to 50V AC/DC  
 Current rating range: 0.2 to 0.5 Amp max  
 Contact resistance range: 30 to 100 mohms max  
 Insulation resistance: 1000 Mohms min  
 Dielectric withstanding voltage: 500 VAC for 1 minute

##### Temperature Rating:

Operating temperature range: -40°C to +105°C



## SCC-A3-08-SG-HC-TR



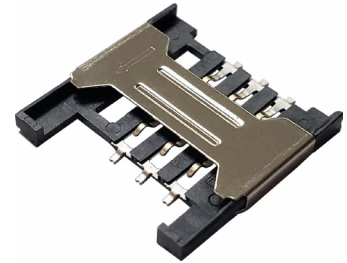
SIM card  
8 pin  
Slide lock hinged cover

## SCC-K-06-SGM-SMT-B-TR



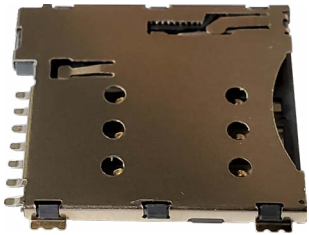
SIM card  
6 pin  
Push-pull (manual, no spring)

## SCC-Q1-06-G-SMT-TR



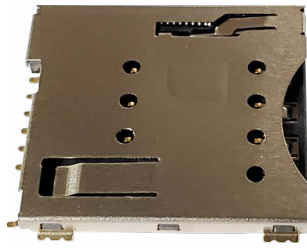
SIM card  
6 pin  
Push-pull (manual, no spring)

## MSCCP-A1-06-SG-SW-TR



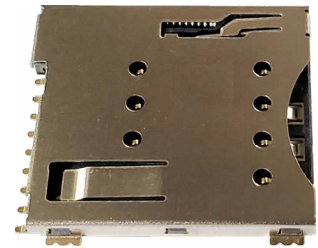
Micro SIM card  
6 pin  
Push-pull (spring loaded ejector)  
Switch

## MSCCP-D-06-SG-SW-TR



Micro SIM card  
6 pin  
Push-pull (spring loaded ejector)  
Switch

## MSCCP-D-08-SG-SW-TR



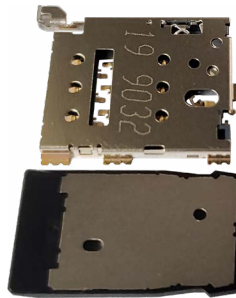
Micro SIM card  
8 pin  
Push-pull (spring loaded ejector)  
Switch

## NSCC-A2-06-G-SMT-TR



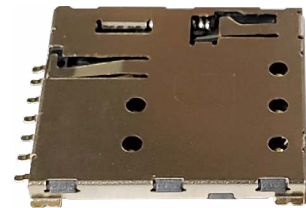
Nano SIM card  
6 pin  
Push-pull (manual, no spring)

## NSCC-C-06-G-SMT-SW-TR



SIM card  
6 pin  
Push-push tray (spring loaded ejector)  
Switch

## NSCC-D-06-G-SMT-SW-TR



SIM card  
6 pin  
Push-push tray (spring loaded ejector)  
Switch



To contact us, scan the QR  
code to reach our website  
inquiry form.

[adam-tech.com](https://adam-tech.com)

Created: Sep-2020  
Last Revised: Sep-2024

**CONFIDENTIAL AND PROPRIETARY**

© Adam Tech. All rights reserved. This document contains confidential and proprietary information belonging to Adam Tech. It is provided solely for design and reference purposes by authorized parties. Any reproduction, distribution, display, or disclosure to third parties, in whole or in part, without the prior written consent of Adam Tech, is strictly prohibited. Adam Tech retains all rights, including copyright, trademark, trade secret, and all other intellectual property rights worldwide.