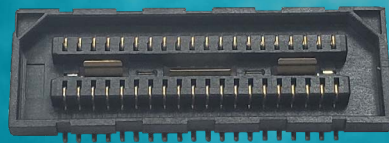
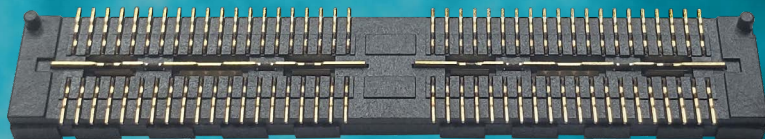
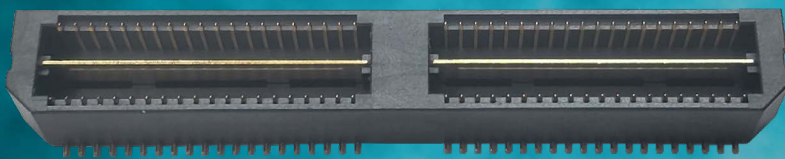
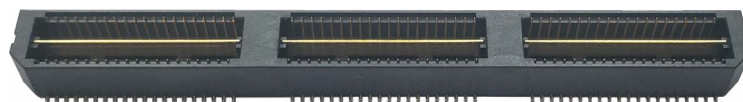
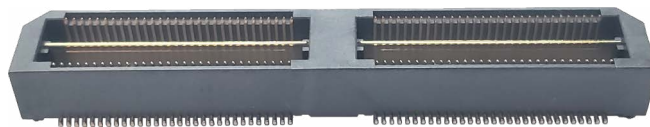
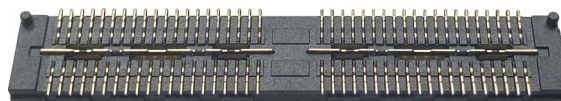
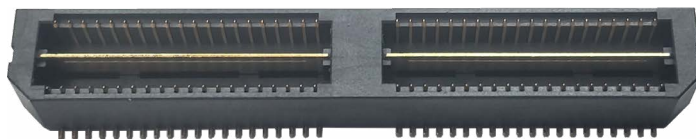
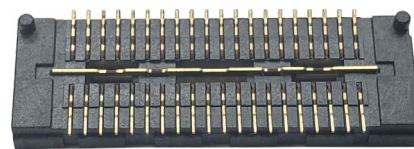
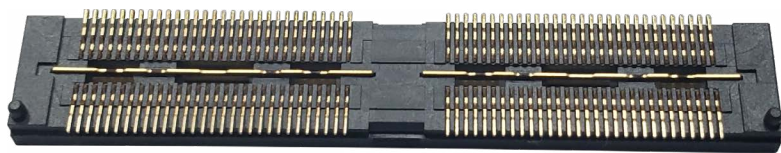


ADAME TECH



HIGH SPEED BOARD-TO-BOARD
CONNECTORS (BBXH SERIES)



Adam Tech expands its board-to-board series with High Speed Board-to-Board Connectors. The signal integrity of these connectors is ideal for any high speed board-to-board application. With both surface mount contacts and a surface mount ground plane, these connectors are designed with optimal electrical performance in mind. This product has a stack height of 5mm (.197") and is available with either a 0.5mm (0.020") or 0.8mm (0.031") pitch. These high speed ground plane board-to-board connectors are ideal for products in various industries including industrial, automotive, and consumer electronics.

APPLICATIONS:

- Visual displays
- Advance driver-assistance systems
- Drones
- Traffic surveillance
- Industrial applications



FEATURES AND BENEFITS:

- Speeds up to 28 Gbps
- Plug and socket mated pairs
- Multiple pin counts
- Surface mount contacts and ground plane
- Stack height: 5mm [.197"]
- High temperature thermoplastic insulator
- Mating cycle: 100 insertions
- Temperature rating: -55°C to +125°C
- RoHS compliant

SPECIFICATIONS:

Material:

Insulator: High temp thermoplastic, rated UL 94V-0

Insulator color: Black

Contacts: Copper alloy

Plating:

8u" gold over nickel underplate on contact area

1u" gold over nickel underplate on solder tails

Environmental:

Lead free, RoHS compliant

Electrical:

Current rating:

Contact: 1.0 A

Ground plane: 7.8 A

Voltage rating: 125 VAC (5mm stack height)

Mating cycles: 100 insertions

Temperature Rating:

Operating temperature: -55°C to +125°C



To contact us, scan the QR
code to reach our website
inquiry form.

adam-tech.com

Created: Apr-2020
Last Revised: Sep-2024