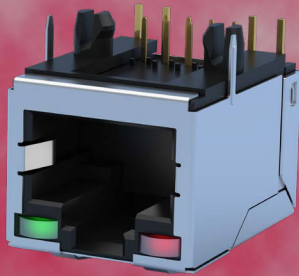
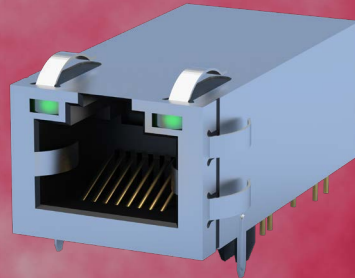


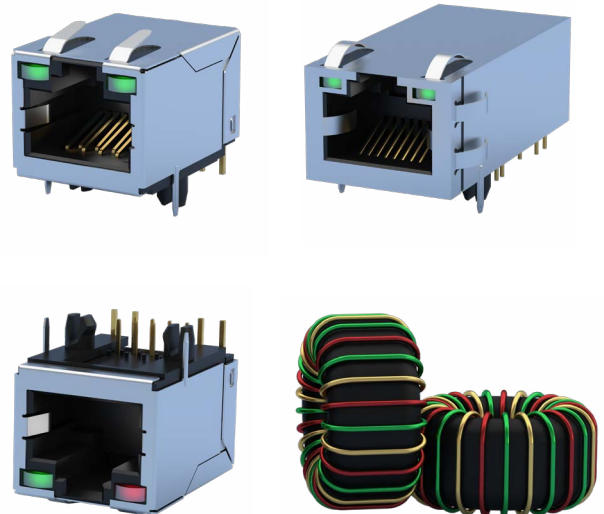
ADAM TECH



INTEGRATED MAGNETICS JACKS

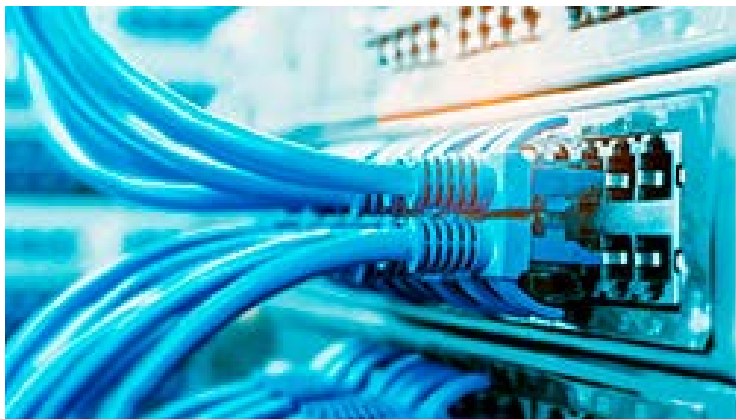


Adam Tech's High Speed Integrated Magnetics Jacks provide fast and reliable solutions to increasing bandwidth requirements. These RJ45s are offered in 1G, 2.5G, 5G, and 10G Base-T speeds, equipping them to be supported by Cat 5e, Cat 6, and Cat 6a ethernet cables. The series includes a variety of options including LED lights, shielding, and magnetics. Adam Tech is committed to accommodating the advancing technology of signal transmission.



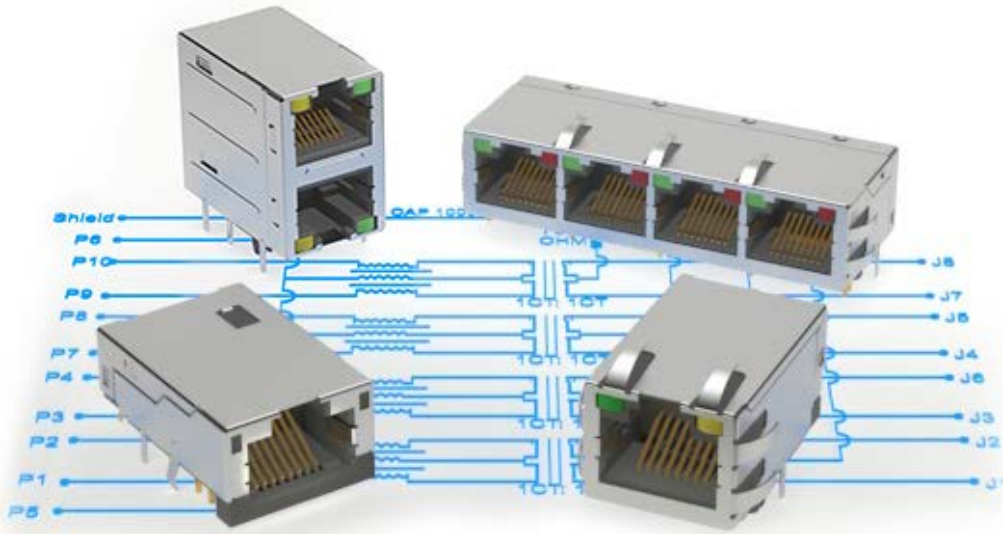
APPLICATIONS:

- Internet
- Computer networking
- Telecommunications



FEATURES AND BENEFITS:

- 8P8C
- 1 and 2 ports
- 1G, 2.5G, 5G, and 10G Base-T
- Cat 5e, Cat 6, and Cat 6a
- Shielded
- Integrated magnetics
- LEDs
- UL certified



Adam Tech MTJ series RJ-45 connectors with integrated magnetics are designed to support Base 10, 100 and 1000-T applications such as hubs, routers, ADSL modems, and ATM transmission equipment. The integrated magnetics allows the design engineer to save PC board real-estate and lower the total part count per system. This series meets all applicable specifications for CAT 5, 5e, 6 and IEEE 802.3. The USB model meets all applicable USB 2.0 specifications. All configurations are available with optional LED's.

FEATURES & SPECIFICATIONS

FEATURES:

Single, stacked and ganged configurations available
All products have a full metal shield to guard against electromagnetic interference. Hi-Temp option available
All products are fully lead free and RoHS compliant

MATING PLUGS:

Adam Tech modular telephone plugs and all industry standard telephone plugs.

PACKAGING:

Anti-ESD plastic trays or tubes

SAFETY AGENCY APPROVALS:

UL Recognized File no. E224049

SPECIFICATIONS:

Material:

Insulator: PBT, glass filled, rated UL94V-0
Insulator Color: Black
Contacts: Phosphor Bronze or Brass
Shield: Copper Alloy, Nickel or Tin plated

Contact Plating:

Gold over Nickel underplate on contact area, Tin over Copper underplate on solder tails.

Electrical:

Operating Voltage: 150V AC
Current Rating: 1.5 Amps Max.
Contact Resistance: 20 mΩ Max.
Insulation Resistance: 500 MΩ Min.
Dielectric Withstanding Voltage: 1500V AC for 1 Minute
DC resistance: 1.2 Ohms Max.
Interwinding capacitance: 35pF @ 1MHz
Insertion loss: 100KHz to 80MHz = -1.1dB Min.
Return loss: 1MHz to 30MHz = -18dB Min.
30MHz to 80MHz = -12dB Min.
Rise time: 30nS Max.
Cross talk: 1MHz to 100MHz = 40dB TYP.
Common to Common mode Attenuation: 35dB TYP.

MECHANICAL:

Insertion force: 8 Contacts: 22.5N
10 Contacts: 24.5N

TEMPERATURE RATING:

Operation Temperature: -40°C ~ +85°C

MAGNETICS TELEPHONE JACK PART NUMBER CONFIGURATION

EXAMPLE									
MTJG - 8 - 8 - C - X - 1 - FSD - LD - M5 - PG									
SERIES	HOUSING PLUG SIZE	NO. OF CONTACT POSITIONS FILLED	HOUSING TYPE	PLATING	BODY COLOR	SHIELD PIN LOCATION FSD OR FSP	LED	TRANSFORMER M1 THRU M20	OPTIONS:
MTJ = Modular Telephone Jack	8 or 10	8 or 10	C = Tab Up, Extended Body S = Tab Up, Standard Body T = Tab Down, Short Body	X = Gold Flash 0 = 15 µin gold 1 = 30 µin gold 2 = 50 µin gold	1 = Black	(See drawing on page 41)	LX = Led Color RLX = Led with Resistor	(See page 44-45) Consult Factory for transformer types not shown	Add designator(s) to end of part number PG = Panel ground tabs

JACKS WITH INTEGRATED MAGNETICS & LEDs PART NUMBER CONFIGURATION

EXAMPLE										
MTJG - 4 - 8 - 8 - T - X - 1 - FSD - LD - M5 - PG										
SERIES	NO. OF PORTS	HOUSING PLUG SIZE	NO. OF CONTACT POSITIONS FILLED	HOUSING TYPE	PLATING	BODY COLOR	SHIELD PIN LOCATION FSD THRU FSH	LED	TRANSFORMER M1 THRU M20	OPTIONS:
MTJG = Magnetics Ganged Jack	2 thru 8	8 or 10	8 or 10	T or J	X = Gold Flash 0 = 15 µin gold 1 = 30 µin gold 2 = 50 µin gold	1 = Black	(See drawing on page 40)	LX = Led Color RLX = Led with Resistor	(See page 44-45) Consult Factory for transformer types not shown	Add designator(s) to end of part number PG = Panel ground tabs



Adam Tech's High Speed RJ45 Jacks are a complete line of RJ45 connectors designed to support 1GB-10GB performance. They are built to meet Category 5e, 6, or 6a performance according to TIA/EIA 568-C-2. These jacks support all Gigabyte and Ethernet Protocols. Versions include metal shielding for EMI protection with ground peg location options, ground fingers and LED's for link/activity indication and network speed verification. Adam Tech RJ45 jacks are compliant to FCC standards and are UL recognized.

FEATURES & SPECIFICATIONS

FEATURES:

- 8P8C
- 1 and 2 ports
- Speeds: 1G, 2.5G, 5G, and 10G Base-T
- Cable compatibility: Cat 5e, Cat 6, and Cat 6a
- Shielded
- Integrated magnetics
- LEDs
- High-temp thermoplastic insulator, UL 94V-0
- UL certified

SAFETY AGENCY APPROVALS:

UL Recognized File no. E224049

SPECIFICATIONS:

Material:

Insulator: Thermoplastic
Contacts: Phosphor bronze or copper alloy
Shield: Brass, nickel plated; or stainless steel

Contact Plating:

Round contacts: Gold over nickel underplate overall
Flat contacts: Gold over nickel underplate on contact area, tin over nickel underplate on solder tails

Electrical:

Operating voltage range: 125 to 150V A
Current rating range: 0.1 to 1.5 Amps
Contact resistance: 20 mΩ max. initial
Insulation resistance: 500 MΩ min.
Dielectric withstanding voltage: 500 to 2250V DC for 1 minute

TEMPERATURE RATING:

Operating temperature range: -40°C to +85°C

ADAM TECH

ADAM TECH USA (WORLDWIDE HQ)

909 Rahway Ave.
Union, NJ 07083
U.S.A.
Tel: 908-687-5000
Fax: 908-687-5710

ADAM TECH EUROPE

Marcel Schwob
Ludwig-Erhard-Allee 10
76131 Karlsruhe, Germany
Tel: +49 (0) 176 47286567
marcel.schwob@adam-tech.com

ADAM TECH SOUTH AMERICA

Cesar Nakajune
Sao Paulo, Brazil
Tel: 55-11-2376-2983
cesar.nakajune@seed4b.com

ADAM TECH TAIWAN

9F-3, No. 10, Lane 609, Sec. 5, Chongxin Rd.
Sanchong Dist., New Taipei City 241
Taiwan (R.O.C.)
Tel: 886-2 2999 8028
Fax: 886-2 2999 8062

ADAM TECH CHINA

Yingfeng 1st Road, Dajingtou Community
Dalang Town, Dongguan City
Guangdong Province
China (P.R.C.)
Tel: 886-2 2999 8028
Fax: 886-2 2999 8062

To contact us, scan the QR
code to reach our website
inquiry form.



adam-tech.com