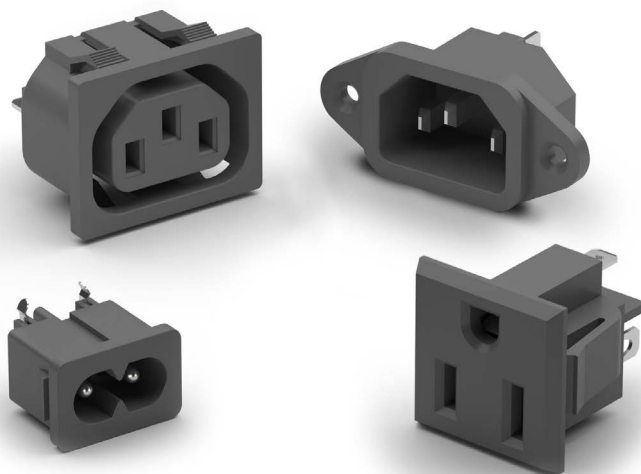


ADAME TECH



POWER CONNECTORS

Adam Tech IEC & Mini IEC series AC Inlets and Outlets are primary power receptacles designed, manufactured, tested and approved to UL, CSA, VDE and other applicable international specifications including IEC-60320 and CEE-22. Adam Tech offers a wide variety of body styles, shapes and orientations to accommodate most class I & II applications with two or three blade contacts in both IEC and Mini IEC configurations. Mounting choices include screw holes and snap-in versions and four termination styles. Options of ganged ports or receptacle with integral fuse holder are also available.



FEATURES & SPECIFICATIONS

FEATURES:

- IEC & Mini-IEC types
- IEC-60320, CEE-22 Compliant
- UL, CSA and VDE approved
- Multitude of Body Styles
- Choice of terminations
- Option of Integral Fuse Holder

MATING CONNECTORS:

Adam Tech PC series power cords and all standard international IEC 60320 power supply cords.

PACKAGING:

Anti-ESD plastic trays

SAFETY AGENCY APPROVALS:

UL Recognized File Nos. E224051, E224052
 ENEC Approved European Norm Electrical Certification

SPECIFICATIONS:

Material:

Insulator: Polycarbonate or Nylon 66, glass filled, rated UL94V-0
 Insulator Color: Black
 Contacts: Phosphor Bronze or Brass

Plating:

Nickel over copper underplate. (Solder terminals: Tin over copper underplate)

Electrical:

Operating Voltage: 250V AC
 Current Rating: IEC - UL & CSA: 15 Amps Max,
 VDE: 10 Amps Max.
 Mini IEC - UL, CSA & VDE 2.5 Amps Max.
 Insulation Resistance: 100 MΩ Min. @ 500V DC
 Dielectric Withstanding Voltage: 2000V AC for 1 Minute

Temperature Rating:

Operation Temperature: -25°C ~ +70°C

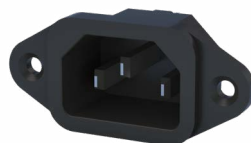


PART NUMBER CONFIGURATION

IEC	-	A	-	1	-	150	-	K
SERIES	BODY STYLE		TERMINALS		PANEL THICKNESS		OPTIONS:	
IEC = International inlet/outlet	See below		1 = .187" Quick-connect terminals 2 = .250" Quick-connect terminals 3 = Solder terminals .157" [4.0mm] 4 = Right Angle PCB mount 5 = Solder Terminals .098" [2.5mm]		(for body styles C, D & J only) Blank = Universal Snap 080 = 0.8mm Panel 120 = 1.2mm Panel 150 = 1.5mm Panel 200 = 2.0mm Panel 300 = 3.0mm Panel		Add designator(s) to end of part number K = Keyed for 120° C (Body Styles A, C, E & J)	

BODY STYLE

- A** = Male Inlet, Screw-on panel mount
- B** = Female Outlet, Screw-on panel mount
- C** = Male Inlet, Snap-in panel mount
- D** = Female Outlet, Snap-in panel mount
- E** = Male Inlet, Right Angle PC board mount with mounting flange (Specify EW, EX, EY or EZ)
- F** = Male Inlet, Screw on panel mount with 5 x 20mm fuse holder
- G** = Male Inlet, Snap-in panel mount with 5 x 20mm fuse holder
- HS** = Inlet/Outlet, snap-in panel mount
- HR** = Inlet/outlet, snap-in panel mount, right angle PCB mount
- J** = Male inlet, right angle PCB & tail with snap-in panel mounting
- NA** = Mini-IEC right angle, snap-in
- NB** = Mini-IEC right angle, slide-in
- NB-A** = Mini-IEC right angle, slide-in with pegs
- NC** = Mini-IEC right angle, with flush flange
- NC-A** = Mini-IEC right angle, with extended face
- ND** = Mini-IEC right angle, with enclosed body
- NF** = Mini-IEC right angle, polarized with flange
- NH** = Mini-IEC right angle, with ground pin
- NH-A** = Mini-IEC right angle, flange mount with ground pin
- GS** = Fused inlet with switch snap in panel mount
- FS** = Fused inlet with switch screw on panel mount
- M** = Female outlet, 20 AMP, Flanged
- N** = Male inlet, 20 AMP, Snap-In



PART NUMBER	TYPE	STYLE	TERMINALS	PANEL THICKNESS	PRODUCT DATA
IEC-A-1	IEC	Male Inlet, Screw On Panel Mount	.187" QD Terminals	3.0mm	View
IEC-A-2	IEC	Male Inlet, Screw On Panel Mount	.250" QD Terminals	3.0mm	View
IEC-A-3	IEC	Male Inlet, Screw On Panel Mount	.157" Solder Terminals	3.0mm	View
IEC-A-4	IEC	Male Inlet, Screw On Panel Mount	Right Angle PCB Mount	3.0mm	View
IEC-B-1	IEC	Female Outlet, Screw On Panel Mount	.187" QD Terminals	3.2mm	View
IEC-B-2	IEC	Female Outlet, Screw On Panel Mount	.250" QD Terminals	3.2mm	View
IEC-C-1	IEC	Male Inlet, Snap In Panel Mount	.187" QD Terminals	3.0mm	View
IEC-C-1-080	IEC	Male Inlet, Snap In Panel Mount	.187" QD Terminals	0.8mm	View
IEC-C-1-150	IEC	Male Inlet, Snap In Panel Mount	.187" QD Terminals	1.5mm	View
IEC-C-1-400	IEC	Male Inlet, Snap In Panel Mount	.187" QD Terminals	4.0mm	View
IEC-C-2	IEC	Male Inlet, Snap In Panel Mount	.250" QD Terminals	3.0mm	View
IEC-C-2-080	IEC	Male Inlet, Snap In Panel Mount	.250" QD Terminals	0.8mm	View
IEC-C-2-150	IEC	Male Inlet, Snap In Panel Mount	.250" QD Terminals	1.5mm	View
IEC-C-2-400	IEC	Male Inlet, Snap In Panel Mount	.250" QD Terminals	4.0mm	View
IEC-C-3	IEC	Male Inlet, Snap In Panel Mount	.157" Solder Terminals	3.0mm	View
IEC-C-3-080	IEC	Male Inlet, Snap In Panel Mount	.157" Solder Terminals	0.8mm	View
IEC-C-3-150	IEC	Male Inlet, Snap In Panel Mount	.157" Solder Terminals	1.5mm	View
IEC-C-3-400	IEC	Male Inlet, Snap In Panel Mount	.157" Solder Terminals	4.0mm	View
IEC-C-5	IEC	Male Inlet, Snap In Panel Mount	.098" Solder Terminals	3.0mm	View
IEC-C-5-080	IEC	Male Inlet, Snap In Panel Mount	.098" Solder Terminals	0.8mm	View
IEC-C-5-150	IEC	Male Inlet, Snap In Panel Mount	.098" Solder Terminals	1.5mm	View
IEC-C-5-400	IEC	Male Inlet, Snap In Panel Mount	.098" Solder Terminals	4.0mm	View
IEC-D-1	IEC	Female Outlet, Snap In Panel Mount	.187" QD Terminals	3.0mm	View
IEC-D-2	IEC	Female Outlet, Snap In Panel Mount	.250" QD Terminals	3.0mm	View
IEC-D-3	IEC	Female Outlet, Snap In Panel Mount	.157" Solder Terminals	3.0mm	View
IEC-D-SX-150	IEC	Stacked Female Outlet, Snap In Panel Mount		3.0mm	View
IEC-EW-4	IEC	Male Inlet, Right Angle PCB Mount with Mounting Flange	Right Angle PCB Mount	3.0mm	View
IEC-EZ-4	IEC	Male Inlet, Right Angle PCB Mount with Mounting Flange	Right Angle PCB Mount	3.0mm	View
IEC-F-1	IEC	Male Inlet, Screw On Panel Mount with Fuse Holder	.187" QD Terminals	3.0mm	View
IEC-F-2	IEC	Male Inlet, Screw On Panel Mount with Fuse Holder	.250" QD Terminals	3.0mm	View
IEC-FS-1	IEC	Fused Inlet with Fused Screw On Panel Mount	.187" QD Terminals	3.0mm	View
IEC-G-1	IEC	Male Inlet, Snap In Panel Mount with Fuse Holder	.187" QD Terminals	3.0mm	View
IEC-G-2	IEC	Male Inlet, Snap In Panel Mount with Fuse Holder	.250" QD Terminals	3.0mm	View
IEC-G-5	IEC	Male Inlet, Snap In Panel Mount with Fuse Holder	.157" Solder Terminals	3.0mm	View
IEC-GS-1-100	IEC	Fused Inlet with Switch Snap in Panel Mount	.187" QD Terminals	1.0mm	View
IEC-GS-1-150	IEC	Fused Inlet with Switch Snap in Panel Mount	.187" QD Terminals	1.5mm	View

PART NUMBER	TYPE	STYLE	TERMINALS	PANEL THICKNESS	PRODUCT DATA
IEC-GS-1-200	IEC	Fused Inlet with Switch Snap in Panel Mount	.187" QD Terminals	2.0mm	View
IEC-HS-1	IEC	Inlet/Outlet Combination, Snap In Panel Mount	.187" QD Terminals	3.0mm	View
IEC-J-4-150	IEC	Male Inlet, Right Angle PCB Mount	Right Angle PCB Mount	1.5mm	View
IEC-J-4-200	IEC	Male Inlet, Right Angle PCB Mount	Right Angle PCB Mount	2.0mm	View
IEC-J-4-300	IEC	Male Inlet, Right Angle PCB Mount	Right Angle PCB Mount	3.0mm	View
IEC-M-1	IEC	Male Inlet, Screw On Panel Mount	.187" QD Terminals	3.0mm	View
IEC-NA-4	Mini IEC	Mini IEC, Right Angle Snap In	Right Angle PCB Mount	2.6mm	View
IEC-NC-4	Mini IEC	Mini IEC, Right Angle with Flush Flange	Right Angle PCB Mount	4.0mm	View
IEC-NC-A-4	Mini IEC	Mini IEC, Right Angle with Extended Face	Right Angle PCB Mount	4.0mm	View
IEC-ND-4	Mini IEC	Mini IEC, Right Angle with Enclosed Body	Right Angle PCB Mount	3.0mm	View
IEC-NF-4	Mini IEC	Mini IEC, Right Angle Polarized with Flange	Right Angle PCB Mount	3.0mm	View
IEC-NH-4	Mini IEC	Mini IEC, Right Angle with Ground Pin	Right Angle PCB Mount	4.0mm	View
NEMA-5-1-A	NEMA	NEMA Receptacle	.187" QD Terminals	3.4mm	View
NEMA-5-1-B	NEMA	NEMA Receptacle	.187" QD Terminals	3.4mm	View
NEMA-5-15-PC	NEMA	NEMA Receptacle	Vertical PCB Mount	5.2mm	View
NEMA-5-2	NEMA	NEMA Receptacle		3.5mm	View
NEMA-5-3	NEMA	NEMA Receptacle	IDC Vertical Orientation	5.2mm	View
NEMA-5-3-HW	NEMA	NEMA Receptacle	IDC Horizontal Orientation	5.0mm	View
NEMA-5-3-RA-AN4860-1-065	NEMA	Female Outlet, Snap In Panel Mount	Right Angle PCB Mount	3.0mm	View
NEMA-5-3-RA-PC	NEMA	NEMA Receptacle	Right Angle PCB Mount	5.3mm	View
PA-001	Power Adapter	Adapter: NEMA Plug to USB Type A Socket			View
PA-002	Power Adapter	Adapter: NEMA Plug to DC Plug			View
PA-003	Power Adapter	Adapter: NEMA Plug to DC Plug			View
PA-004	Power Adapter	Adapter: NEMA Plug to DC Plug			View
PA-005	Power Adapter	Adapter: NEMA Plug to DC Plug			View
PA-006	Power Adapter	Adapter: IEC Socket to DC Plug			View
PA-007-X	Power Adapter	Adapter: NEMA Plug to DC Plug			View
PA-008-X	Power Adapter	Adapter: NEMA Plug to DC Plug			View
PA-009-X	Power Adapter	Adapter: NEMA Plug to DC Plug			View
PA-010	Power Adapter	Adapter: NEMA Plug to USB Type A Socket			View
PA-011	Power Adapter	Adapter: IEC Socket to DC Plug			View
PA-012	Power Adapter	Adapter: NEMA Plug to DC Plug			View
PA-013	Power Adapter	Adapter: NEMA Plug to DC Plug			View
PA-014	Power Adapter	Adapter: NEMA Plug to USB Type C Socket			View
PC-0102076AC03	Power Cord				View
PC-0103150BA03	Power Cord				View



To contact us, scan the QR
code to reach our website
inquiry form.

adam-tech.com

Created: Jan-2020
Last Revised: Sep-2024