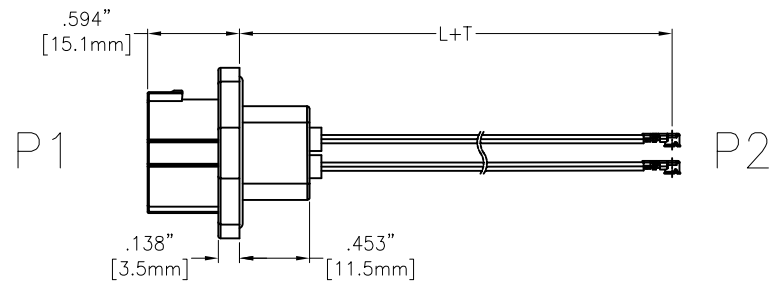
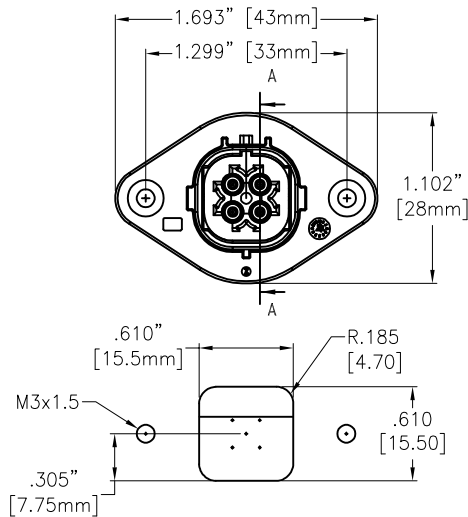


APPROVED: _____

DATE: _____ TITLE: _____

CUSTOM CABLE ASSEMBLIES ARE NON-CANCELLABLE/NON-RETURNABLE



SPECIFICATIONS:

Connector:

P1= Mini FAKRA Code see Page 2, Plug, Straight, Gold Plated, W/Flange

P2= I-PEX MHF, Gold Plated

Cable:

30AWG, Micro Coaxial cabel, O.D= .054" [1.37mm], Jacket color: Grey

Electrical:

Impedance: 50ohms

Frequency: 9 GHZ

Insulation resistance: 100 Mohms min

Mechanical:

Insertion Force: 75N max

Unmating Force: 5N min

Engagement force: 75N max

Durability: 25 cycles min

Environmental:

Thermal shock & Mechanical shock & Humidity & Vibration:

USCAR-2 & USCAR-17

DIN EN 60512 & DIN IEC 60068

Temperature Rating:

Operating temperature: -40°C to +90°C

Electrical Test:

All Assemblies must be 100% Tested for Shorts, Open, Continuity, and Physical Appearance.

Packing:

Standard: Bag

Environmental:

Waterproof: IP67

Lead free, RoHS compliant



Rev	AWO #	Description	Date	Appr
-		RELEASED	12/12/25	

CA-AM04FXP-MHF4-XM-WP

ADAM TECH P/N	L+T
CA-AM04FXP-MHF4-1M-WP	39.370"±1.181" [1000±30mm]

UNLESS OTHERWISE SPECIFIED ALL DIMENSIONS
ARE INCHES [MM]. TOLERANCES: EXCEPT AS NOTED

.X	± .10	Ø.X	±.10
INCHES .XX	± .020	HOLES Ø.XX	±.015
.XXX	± .015	Ø.XXX	±.010

DRAWN	WY	12/12/25
CHECKED	RC	12/12/25
APPROVED		

CONFIDENTIAL AND PROPRIETARY

© Adam Tech. All rights reserved. This document contains confidential and proprietary information belonging to Adam Tech. It is provided solely for design and reference purposes by authorized parties. Any reproduction, distribution, display, or disclosure to third parties, in whole or in part, without the prior written consent of Adam Tech, is strictly prohibited. Adam Tech retains all rights, including copyright, trademark, trade secret, and all other intellectual property rights worldwide.

**ADAM
TECH**

909 Rahway Avenue,
Union, NJ 07083
Phone: 908-687-5000
adam-tech.com

TITLE CUSTOM ASSEMBLY, MINI FAKRA PLUG 2*2
TO IPEX MHF, W/TPA, 30AWG, IP67

SIZE X	PART NO. CA-AM04FXP-MHF4-XM-WP	REV. -
REF: S00013T	SCALE: NTS	SHEET 1 OF 2

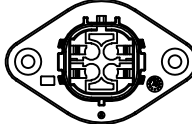
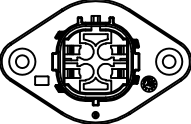
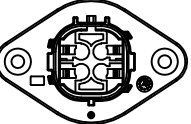
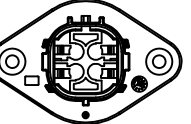
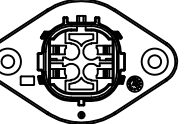
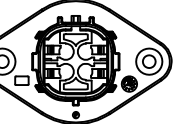
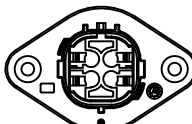
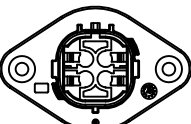
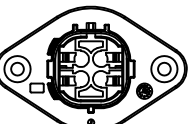
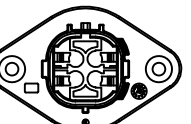
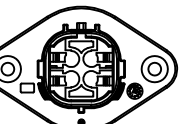
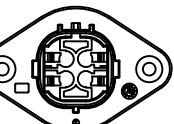
APPROVED: _____

DATE: _____ TITLE: _____

CUSTOM CABLE ASSEMBLIES ARE NON-CANCELLABLE/NON-RETURNABLE

★ Developing

CA-AM04FXP-MHF4-XM-WP

Coding	A★	B★	C★	D★	E★	F★
Plug						
Color	Jet Black	Pure White	Light Blue	Claret Violet	May Green	Nut Brown
Coding	G★	H★	J★	K★	N★	Z
Plug						
Color	Platinum Grey	Light Pink	Beige	Curry	Platinum Green	Water Blue

UNLESS OTHERWISE SPECIFIED ALL DIMENSIONS
ARE INCHES [MM]. TOLERANCES: EXCEPT AS NOTED

.X	± .10	Ø.X	±.10
INCHES .XX	± .020	HOLES Ø.XX	±.015
.XXX	± .015	Ø.XXX	±.010

DRAWN

WY

12/12/25

CHECKED

RC

12/12/25

APPROVED

CONFIDENTIAL AND PROPRIETARY

© Adam Tech. All rights reserved. This document contains confidential and proprietary information belonging to Adam Tech. It is provided solely for design and reference purposes by authorized parties. Any reproduction, distribution, display, or disclosure to third parties, in whole or in part, without the prior written consent of Adam Tech, is strictly prohibited. Adam Tech retains all rights, including copyright, trademark, trade secret, and all other intellectual property rights worldwide.

ADAM
TECH

909 Rahway Avenue,
Union, NJ 07083
Phone: 908-687-5000
adam-tech.com

TITLE
CUSTOM ASSEMBLY, MINI FAKRA PLUG 2*2
TO IPEX MHF, W/TPA, 30AWG, IP67

SIZE
X

PART NO.

CA-AM04FXP-MHF4-XM-WP

REV.
-

REF: S00013T

SCALE: NTS

SHEET 2 OF 2