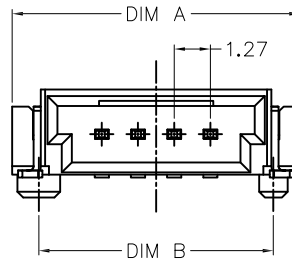
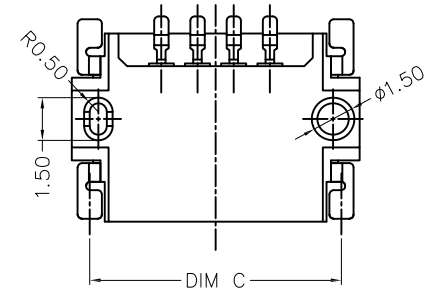
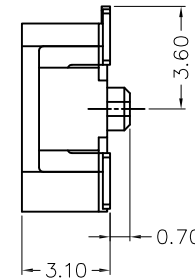
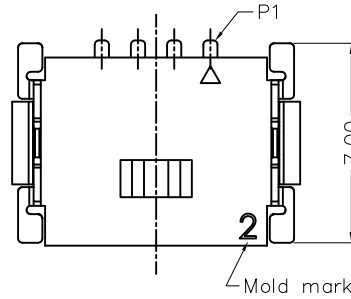
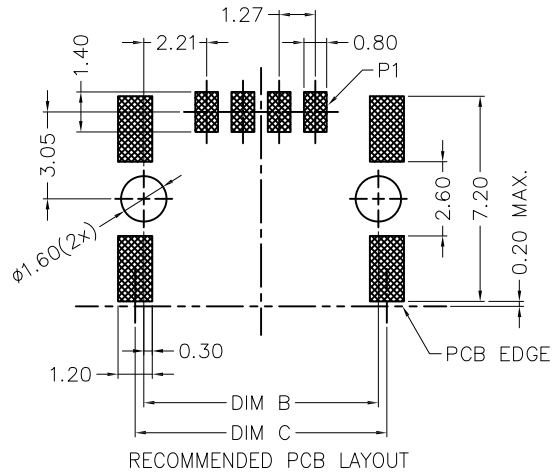


APPROVED: _____
 DATE: _____ TITLE: _____

Rev	AWO #	Description	Date	Appr
-		RELEASED	2/10/20	
A		UPDATE DRAWING	5/7/21	LH/YC



PIN NO.	DIM A	DIM B	DIM C
02	7.56	5.69	6.29
03	8.83	6.96	7.56
04	10.10	8.23	8.83
06	12.64	10.77	11.37
08	15.18	13.31	13.91
10	17.72	15.85	16.45
12	20.26	18.39	18.99

SPECIFICATIONS:

Material:
 Insulator: Hi-Temp Thermoplastic, rated UL 94V-0
 Insulator color: Black
 Contacts: High Conductivity Copper,
 Board Lock: Brass, Tin over Nickel Plated
 Plating:
 Gold Flash over Nickel underplate on contact area,
 Tin over Nickel underplate on solder tails
 Electrical:
 Current rating: 5 A Max
 Contact resistance: 25 mohms max
 Insulation resistance: 1,000 Mohms min
 Dielectric withstanding voltage: 500 VAC For 1 Minute
 Temperature Rating:
 Operating temperature: -55°C to +125°C
 Environmental:
 Lead free, RoHS compliant



PACKAGED ON TAPE & REEL

UNLESS OTHERWISE SPECIFIED ALL DIMENSIONS ARE MILLIMETERS. TOLERANCES: EXCEPT AS NOTED		
.X	± 0.35	ANGLE ± 2°
.XX	± 0.20	
.XXX	± 0.10	
DRAWN	LH	2/10/20
CHECKED	JC	2/10/20
APPROVED		
THIS DRAWING CONTAINS INFORMATION THAT IS PROPRIETARY AND SHOULD NOT BE USED WITHOUT PRIOR WRITTEN PERMISSION FROM ADAM TECH		

ADAM TECH 909 Rahway Avenue,
 Union, NJ 07083
 Phone: 908-687-5000
 Fax: 908-687-5710

TITLE: .050 [1.27] PITCH SMC MALE CONNECTOR
 SINGLE ROW, RIGHT ANGLE, SMT TYPE

SIZE X	PART NO. ESMC-1-M-XX-SGR-SMT-T/R	REV. -
REF: S00242T	SCALE: NTS	SHEET 1 OF 1