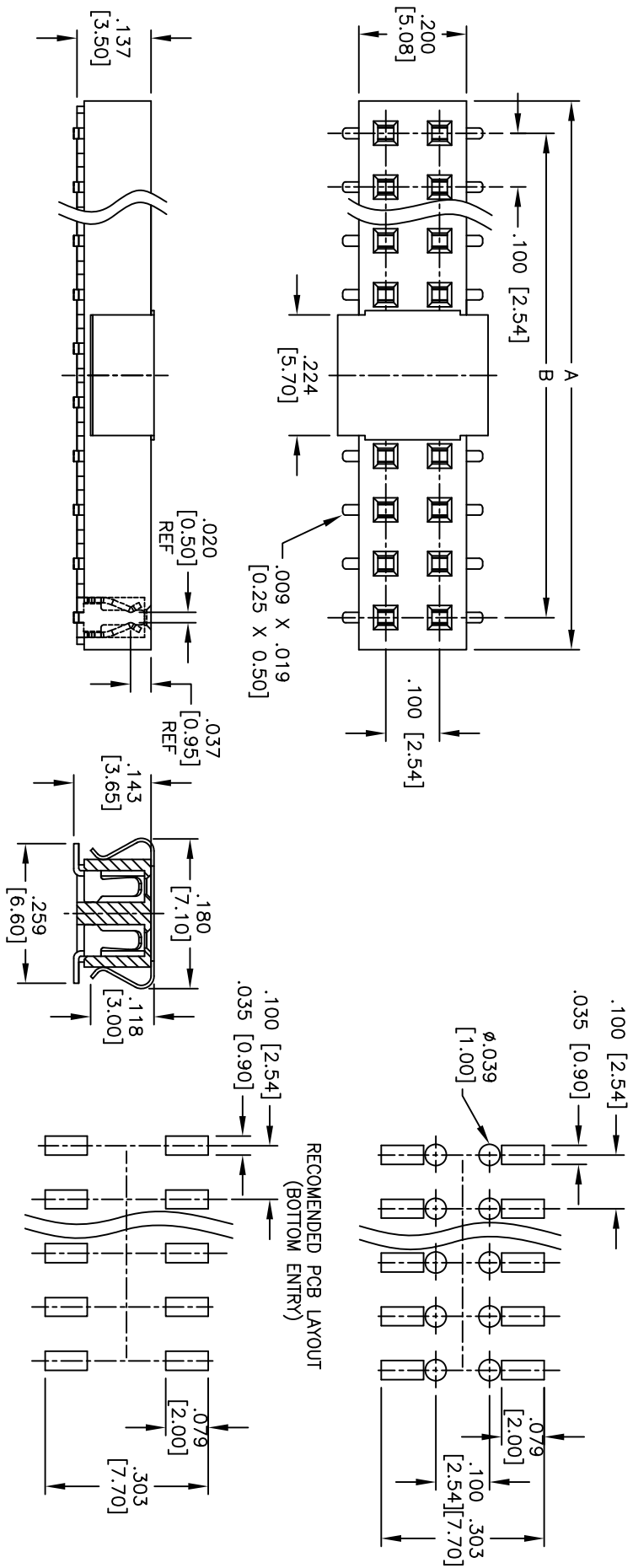


Rev	AWO #	Description	Date	Appr
-		RELEASED	1/22/14	

APPROVED: _____
 DATE: _____ TITLE: _____



RECOMMENDED PCB LAYOUT
(BOTTOM ENTRY)

RECOMMENDED PCB LAYOUT
(TOP ENTRY)

PACKAGED ON TAPE & REEL

Positions: 04 thru 80
 A = .100 [2.54] X No. of Positions/row + .019 [0.50]
 B = .100 [2.54] X No. of Spaces

ADAM TECH

909 Rahway Avenue, Union, NJ 07083
 Phone: 908-687-5000 Fax: 908-687-5710

TITLE: .100 x .100 DUAL ROW RECEPTACLE STRIP
 .138 [3.50] HEIGHT, GOLD PLATED

SPECIFICATIONS:
 Material: Insulator: Hi-temp thermoplastic, rated UL 94V-0
 Insulator color: Black
 Contacts: Phosphor Bronze
 Plating: Gold flash over Nickel underplate overall
 Electrical: Current rating: 3 Amps max.
 Contact resistance: 20 mohms max. initial
 Insulation resistance: 1,000 Mohms min.
 Dielectric withstanding voltage: 600 VAC for 1 minute
 Temperature Rating: Operating temperature: -40°C to +105°C
 Environmental: Lead free, RoHS compliant.

UNLESS OTHERWISE SPECIFIED ALL DIMENSIONS ARE INCHES [MM]	
.X	± .10
.XX	± .020
.XXX	± .015
.XXX	± .015
TOLERANCES: EXCEPT AS NOTED	
INCHES	
HOLE SIZES	
ØX	± .10
ØXXX	± .015
ØXXX	± .010
APPROVALS	
DATE	DATE
DRAWN	AY
CHECKED	LL
APPROVED	
DATE	1/22/14
DATE	1/22/14

SIZE	PART NO.	REV.
X	RSVL-2A-XX-G-SMT-PP-1/R	-
REF: S0002T	SCALE: NTS	SHEET 1 OF 1

