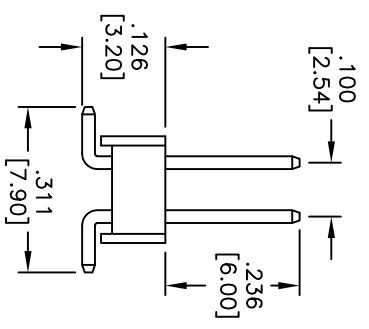
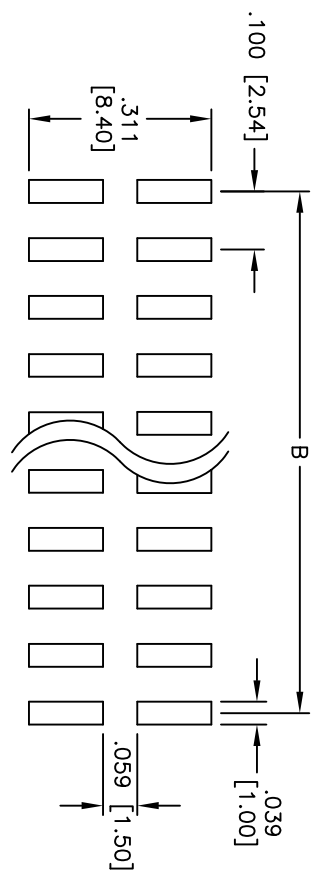
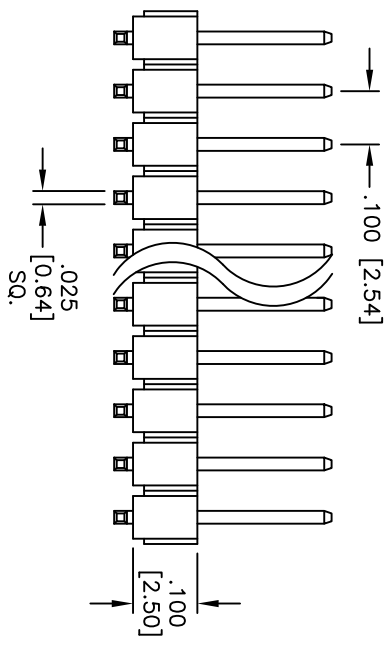
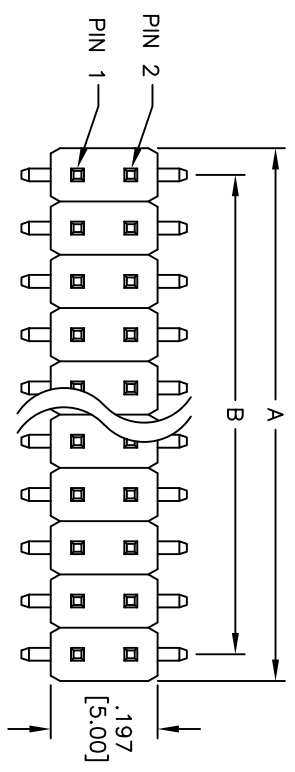


APPROVED: _____
 DATE: _____ TITLE: _____



RECOMMENDED PCB LAYOUT

SPECIFICATIONS:

Material:
 Insulator: Hi-temp thermoplastic, rated UL 94V-0
 Insulator color: Black
Contacts: Brass
Plating:
 Gold flash over Nickel underplate on contact area,
 Tin over Copper underplate on tails.
Electrical:
 Current rating: 3 Amp max
 Contact resistance: 20 mohms max
 Insulation resistance: 5,000 Mohms min @ 500 VDC
 Dielectric withstanding voltage: 500 VAC for 1 minute
Temperature Rating:
 Operating temperature: -40°C to +105°C
Environmental:
 Lead free, RoHS compliant



Rev	AWO #	Description	Date	Appr
-		RELEASED	11/2/11	
A		REVISED SPEC.	5/8/12	

Positions: 4 thru 80
 A = .100 [2.54] x No. of Positions per Row
 B = .100 [2.54] x No. of Spaces

UNLESS OTHERWISE SPECIFIED ALL DIMENSIONS ARE INCHES [MM]	
TOLERANCES: EXCEPT AS NOTED	
INCHES	HOLDS
.X ± .10	ØXX ± .10
.XX ± .020	ØXXX ± .015
.XXX ± .015	ØXXXX ± .010
APPROVALS	DATE
DRAWN AY	11/2/11
CHECKED AH	11/2/11
APPROVED	

ADAM TECH
 909 Railway Avenue, Union, NJ 07083
 Phone: 908-687-5000 Fax: 908-687-5710

TITLE: .100 [2.54] DUAL ROW PIN HEADER
 SURFACE MOUNT, SEL GOLD PLATED

SIZE	PART NO.	REV.
X	PH2-XX-SGA-SMT	A

REF: S00039T SCALE: NTS SHEET 1 OF 1