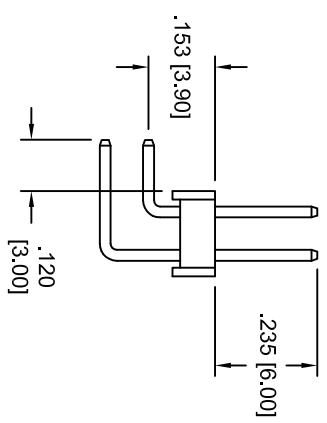
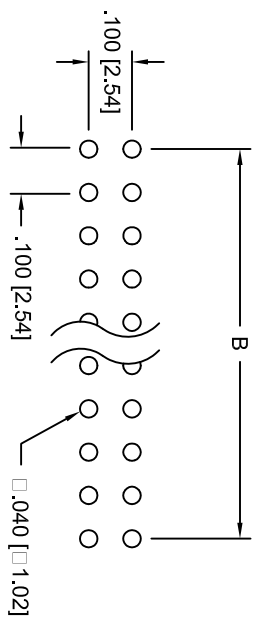
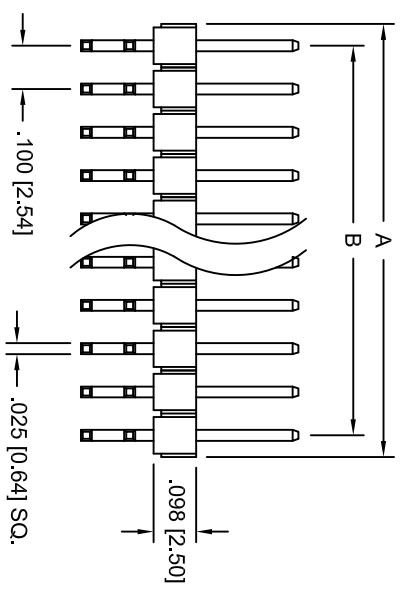
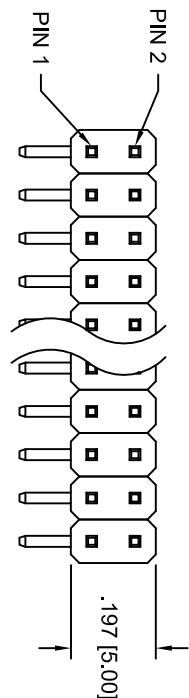


APPROVED: _____
 DATE: _____ TITLE: _____



A = .100 [2.54] X No. of Positions.
 B = .100 [2.54] X No. of Spaces.

SPECIFICATIONS:

- Material: Insulator: PBT, rated UL 94V-0
- Insulator color: Black
- Contacts: Brass
- Plating: Gold Flash over Nickel underplate on mating area, Tin over Copper underplate on solder tails
- Electrical: Operating voltage: 250 VAC max
- Current rating: 3 Amps max
- Contact resistance: 20 mohms max. Initial
- Insulation resistance: 5000 Mohms min @ 500 VDC
- Dielectric withstanding voltage: 1000 VAC for 1 minute
- Temperature Rating: Operating temperature: -40°C to +105°C
- Environmental: Lead free, RoHS compliant.
- Recommended soldering temp: 235°C for 5 sec.

| Rev | AWO # | Description | Date | Appr |
|-----|-------|---------------|----------|------|
| - | | RELEASED | 9/20/04 | |
| A | | REVISED SPEC. | 10/11/11 | |

RECOMMENDED
PCB LAYOUT

ADAM TECH

909 Railway Avenue, Union, NJ 07083
 Phone: 908-687-5000 Fax: 908-687-5710

TITLE: DUAL ROW PIN HEADER, .100" [2.54mm] PITCH, SEL GOLD PLATED, 2 TO 80 PINS

| | | | | | |
|---------------------------------------------------------------------------------------------|--------|--------------|--------|--------------|--|
| UNLESS OTHERWISE SPECIFIED ALL DIMENSIONS ARE INCHES [MM] TOLERANCES: EXCEPT AS NOTED | | INCHES | | HOLE SIZES | |
| .X | ± .10 | ØXX | ± .10 | | |
| .XX | ± .020 | ØXXX | ± .015 | | |
| .XXX | ± .015 | ØXXX | ± .010 | | |
| APPROVALS | | DATE | | TITLE | |
| DRAWN | SS | 9/20/04 | | PART NO. | |
| CHECKED | | | | PH2RA-XX-SGA | |
| APPROVED | | | | SCALE: NTS | |
| REV. A | | SHEET 1 OF 1 | | REV. A | |

