

6

5

4

3

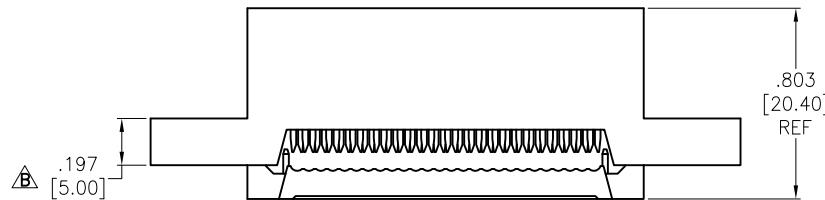
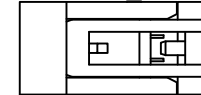
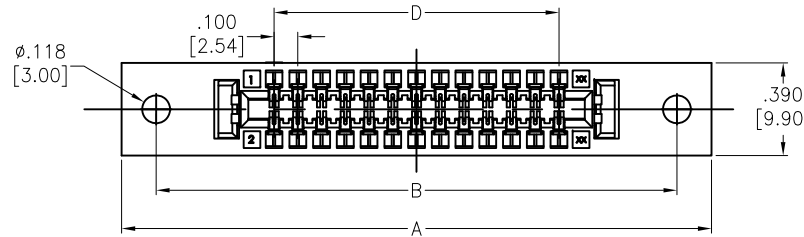
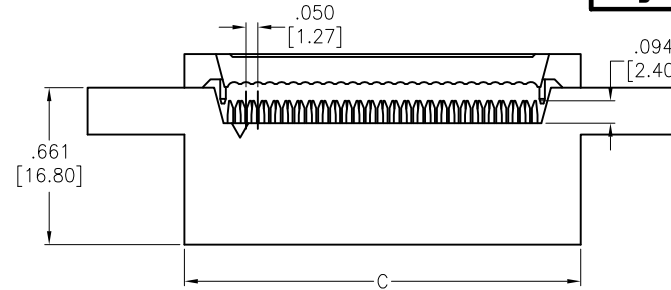
2

1

APPROVED: \_\_\_\_\_

DATE: \_\_\_\_\_ TITLE: \_\_\_\_\_

Rev	AWO #	Description	Date	Appr
-		RELEASED	9/2/21	
A		UPDATE DIM.	10/28/21	LH/LL1
B		ADDED DIM.	11/25/24	LH/KC



- ▲ Positions: 10 thru 40
- A = .100 [2.54] x No. of Positions per Row + 1.184 [30.08]
  - B = .100 [2.54] x No. of Positions per Row + .894 [22.70]
  - C = .100 [2.54] x No. of Positions per Row + .369 [9.38]
  - D = .100 [2.54] x No. of Spaces

SPECIFICATIONS:

Material:  
 Insulator: PBT, glass reinforced, rated UL 94V-0  
 Insulator color: Black  
 Contacts: Phosphor Bronze  
 Plating:  
 Gold flash over Nickel underplate overall  
 Electrical:  
 Current rating: 1 Amp.  
 Contact resistance: 20 mohms max.  
 Insulation resistance: 1,000 Mohms min.  
 Dielectric withstanding voltage: 500 VAC/DC  
 Temperature Rating:  
 Operating temperature: -40°C to +105°C  
 Environmental:  
 Lead free, RoHS compliant



UNLESS OTHERWISE SPECIFIED ALL DIMENSIONS ARE INCHES [MM]. TOLERANCES: EXCEPT AS NOTED

INCHES		HOLES	
.x	± .10	Øx	±.10
.xx	± .020	Øxx	±.015
.xxx	± .015	Øxxx	±.010



909 Rahway Avenue,  
 Union, NJ 07083  
 Phone: 908-687-5000  
 Fax: 908-687-5710

DRAWN	JJ	9/2/21
CHECKED	KL	9/2/21
APPROVED		
THIS DRAWING CONTAINS INFORMATION THAT IS PROPRIETARY AND SHOULD NOT BE USED WITHOUT PRIOR WRITTEN PERMISSION FROM ADAM TECH		

TITLE		.100 [2.54] IDC CARD EDGE SOCKET W/ROUND HOLE MOUNTING EAR	
SIZE	PART NO.	REV.	
X	FCE-XX-G-MH	B	
REF:	S00019C	SCALE:	NTS
		SHEET 1 OF 1	

6

5

4

3

2

1