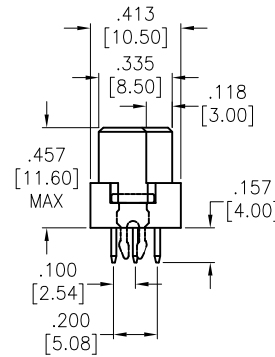
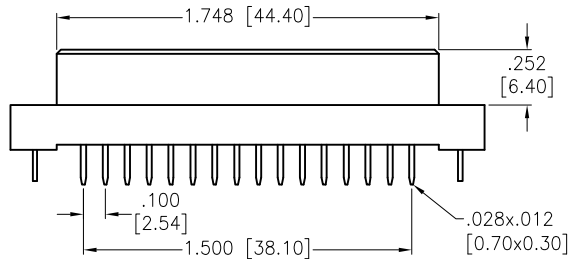
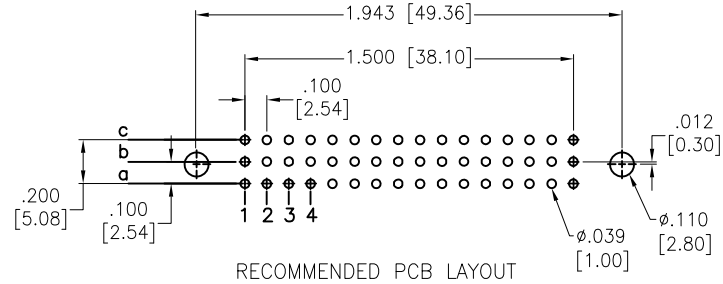
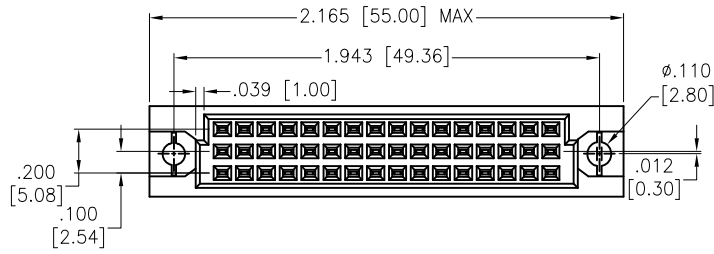


APPROVED: _____
 DATE: _____ TITLE: _____

Rev	AWO #	Description	Date	Appr
-		RELEASED	2/7/12	
A		REVISED PIN DIM.	02/16/12	
B		REVISED SPEC.	8/15/13	
C		REVISED DIM.	8/15/13	AY/AC
D		UPDATE DRAWING	6/14/19	AY/DH



SPECIFICATIONS:

Material:
 Insulator: PBT, glass filled, rated UL 94V-0
 Insulator color: Beige
 Contacts: Phosphor Bronze
 Lock: Phosphor Bronze

Plating:
 Gold over Nickel underplate on contact area,
 Tin over Copper underplate on solder tails.
 (See chart for thickness)

Electrical:
 Current rating: 2 Amp
 Contact resistance: 20 mohms max @ DC 100mA
 Insulation resistance: 1,000 Mohms min @ 500 VDC
 Dielectric withstanding voltage: 1,000 VAC for 1 minute

Temperature Rating:
 Operating temperature: -55°C to +125°C

Environmental:
 Lead free, RoHS compliant.



"X"	PLATING	CLASS
1	30 u" Gold	1
2	15 u" Gold	2
3	Gold Flash	3

UNLESS OTHERWISE SPECIFIED
 ALL DIMENSIONS ARE INCHES [MM]
 TOLERANCES: EXCEPT AS NOTED
 INCHES HOLES

.X ± .10	Ø.X ± .10
.XX ± .020	Ø.XX ± .015
.XXX ± .015	Ø.XXX ± .010

ADAM TECH
 INTERCONNECTS
 909 Rahway Avenue,
 Union, NJ 07083
 Phone: 908-687-5000
 Fax: 908-687-5710

TITLE
 DIN TYPE 1/2 C FEMALE, 48 PIN,
 3 ROW STRAIGHT, BOARD LOCK

APPROVALS		DATE
DRAWN	AY	2/7/12
CHECKED		
APPROVED		

SIZE	PART NO.	REV.
X	DIN-48FS-S33-A1CX-BL	C
REF:	S00058T	SCALE: NTS SHEET 1 OF 1