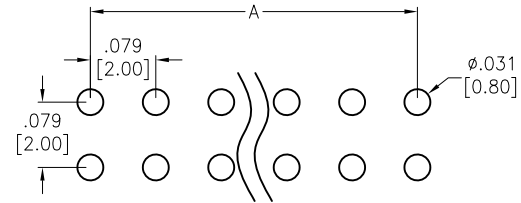
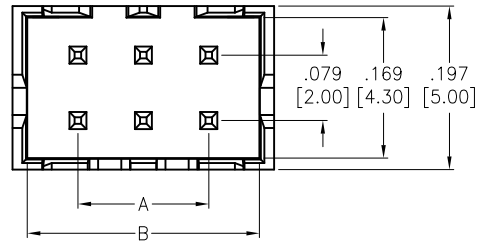
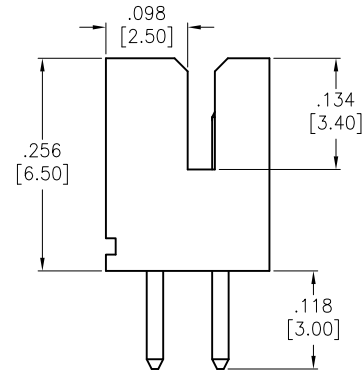
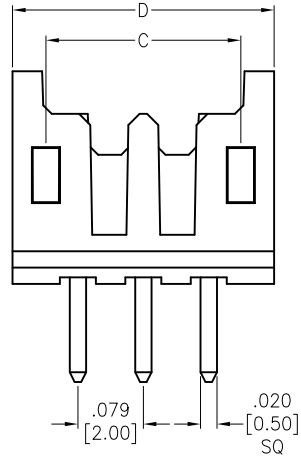


APPROVED: _____
 DATE: _____ TITLE: _____

Rev	AWO #	Description	Date	Appr
-		RELEASED	8/30/11	
A		UPDATE DRAWING	11/5/15	AY/SL
B		UPDATE DRAWING	11/3/20	OW/EC



RECOMMENDED PCB LAYOUT



SPECIFICATIONS:

Material:
 Insulator: (PY46) Hi-temp thermoplastic, rated UL 94V-0
 Insulator Color: White
 Contacts: Brass
 Plating:
 Tin over Nickel underplate overall
 Electrical:
 Current rating: 2 Amp
 Contact resistance: 20 mohms max
 Insulation resistance: 1,000 Mohms min
 Dielectric withstanding voltage: 500 VAC
 Temperature Rating:
 -40°C to +105°C
 Environmental:
 Lead free, RoHS compliant



Positions: 04 thru 50

- A = .079 [2.00] x No. of Space
- B = .079 [2.00] x No. of Space + .122 [3.10]
- C = .079 [2.00] x No. of Space + .077 [1.96]
- D = .079 [2.00] x No. of Space + .157 [4.00]

UNLESS OTHERWISE SPECIFIED ALL DIMENSIONS ARE INCHES [MM] TOLERANCES: EXCEPT AS NOTED		 909 Rahway Avenue, Union, NJ 07083 Phone: 908-687-5000 Fax: 908-687-5710		
INCHES HOLES				
.X ± .10	∅.X ± .10	TITLE .079 [2.00] DOUBLE ROW, SHROUDED HEADER, STRAIGHT, PCB, TIN PLATED		
.XX ± .020	∅.XX ± .015			
.XXX ± .015	∅.XXX ± .010			
APPROVALS		DATE	SIZE X	
DRAWN	AY	8/30/11		
CHECKED	AH	8/30/11		
APPROVED			PART NO.	REV.
			2SHD-C-XX-TS-HT	B
			REF: S00111C	SCALE: NTS
			SHEET 1 OF 1	