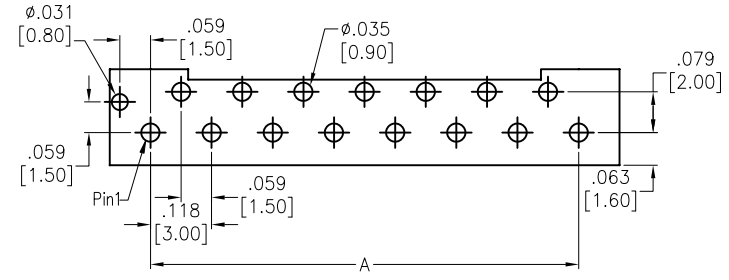
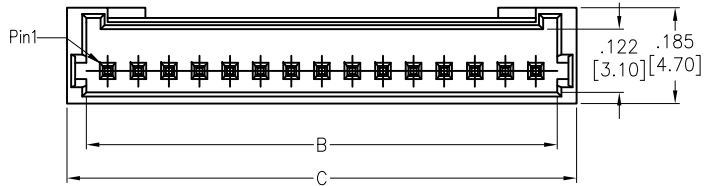
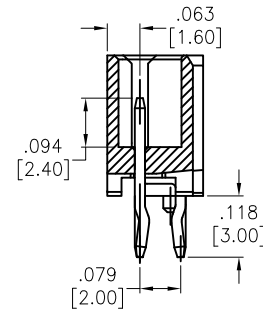
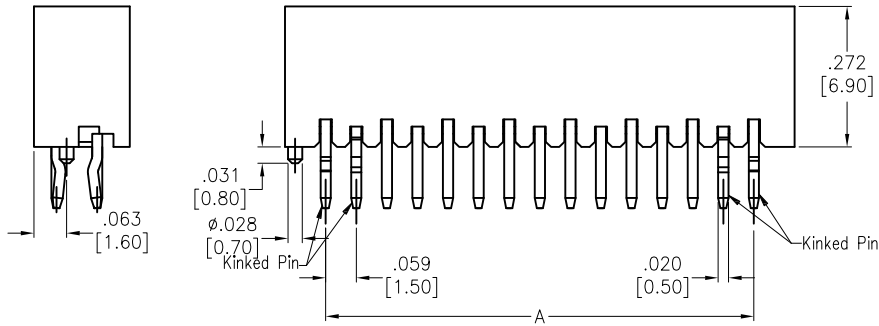


APPROVED: \_\_\_\_\_  
 DATE: \_\_\_\_\_ TITLE: \_\_\_\_\_

Rev	AWO #	Description	Date	Appr
-		RELEASED	5/6/19	



RECOMMENDED PCB LAYOUT



SPECIFICATIONS:

Material:  
 Insulator: Hi-Temp Thermoplastic, rated UL 94V-0  
 Insulator color: Natural  
 Contacts: Brass  
 Plating:  
 Tin over Nickel underplate overall  
 Electrical:  
 Voltage rating: 50 V AC/DC  
 Current rating: 1 Amp max  
 Contact resistance: 20 mohms max  
 Insulation resistance: 500 Mohms min  
 Dielectric withstanding voltage: 500 V AC/DC  
 Temperature Rating:  
 Operating temperature: -25°C to +85°C  
 Environmental:  
 Lead free, RoHS compliant



Positions: 02 thru 20

A = .059 [1.50] x No. of Space  
 B = .059 [1.50] x No. of Space + .083 [2.10]  
 C = .059 [1.50] x No. of Space + .157 [4.00]

UNLESS OTHERWISE SPECIFIED ALL DIMENSIONS ARE MILLIMETERS TOLERANCES: EXCEPT AS NOTED		<b>ADAM TECH</b> 909 Rahway Avenue, Union, NJ 07083 Phone: 908-687-5000 Fax: 908-687-5710	
MM	ANGLE		
X.X ± 0.38	X. ± 5°	TITLE .059 [1.50] PITCH SHROUDED HEADER TOP ENTRY TYPE, DIP TYPE	
X.XX ± 0.20	X.X ± 2°		
X.XXX ± 0.10	X.XX ± 1°	SIZE X	
APPROVALS			
DRAWN	OW	5/6/19	
CHECKED	NP	5/6/19	
APPROVED			
REF:	S00019C	SCALE:	NTS
PART NO.		REV.	
15SH-D1-XX-TS-HT		-	
SHEET 1 OF 1			