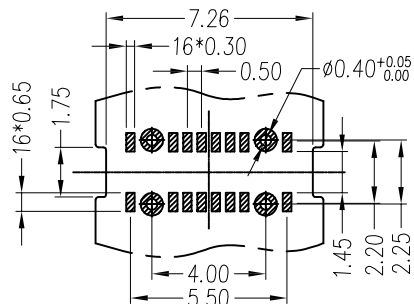


APPROVED: _____

DATE: _____ TITLE: _____



RECOMMENDED PCB LAYOUT
(TOP VIEW)

PCB THICKNESS: 0.3 ±0.03

| | | | | | | | | | | | |
|-----|-----|-----|------|------|----|----|------|------|-----|-----|-----|
| A12 | A11 | A10 | A9 | A8 | A7 | A6 | A5 | A4 | A3 | A2 | A1 |
| GND | | | Vbus | SBU1 | DN | DP | CC1 | Vbus | | | GND |
| GND | | | Vbus | CC2 | DP | DN | SBU2 | Vbus | | | GND |
| B1 | B2 | B3 | B4 | B5 | B6 | B7 | B8 | B9 | B10 | B11 | B12 |

SPECIFICATIONS:

Material:

Insulator: (LCP) Hi-temp thermoplastic, rated UL 94V-0

Insulator Color: Black

Cover: Hi-temp thermoplastic, Color: Black

Contacts: Copper Alloy

Shell: Stainless Steel, Nickel plated

Latch: Stainless Steel, Tin over Nickel Plated

Spring: Stainless Steel

Plating:

Gold flash over Nickel underplate on contact area

Tin over Nickel underplate on solder tails

Electrical:

Voltage: 30V DC

Current rating: 5.0 A max

Contact resistance: 40 mohms max

Insulation resistance: 100 Mohms min

Dielectric withstanding voltage: 100V for 1 minute

Mechanical:

Insertion force: 5-20 N

Unmating force: 8-20 N

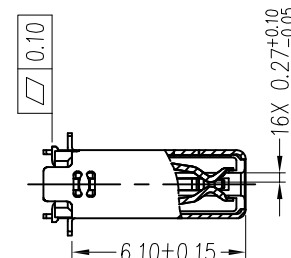
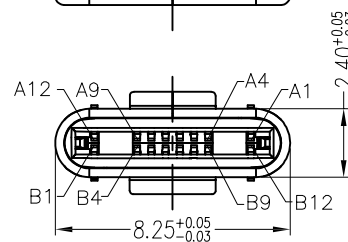
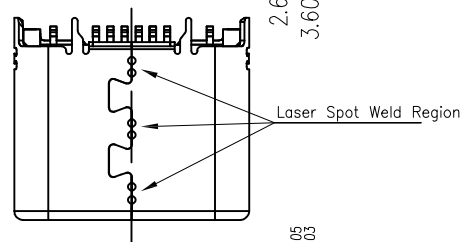
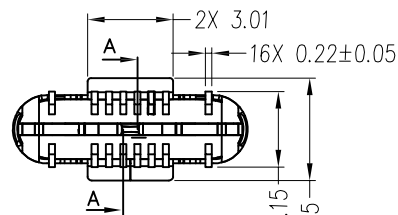
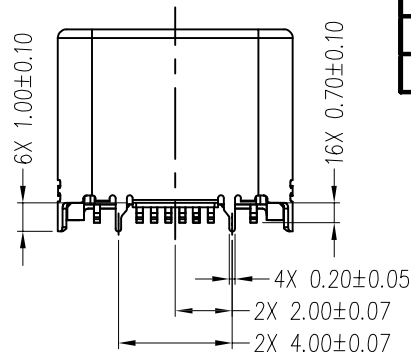
Durability: 5,000 Cycles

Temperature Rating:

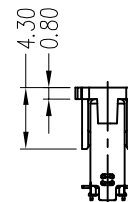
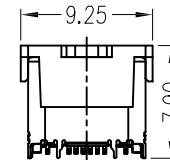
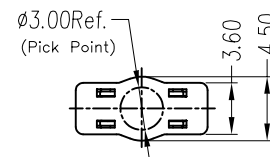
-40°C to +85°C

Environmental:

Lead free, RoHS compliant.



With Stopper VIEW:



PACKAGED ON TAPE & REEL

UNLESS OTHERWISE SPECIFIED ALL DIMENSIONS
ARE MM. TOLERANCES: EXCEPT AS NOTED

| MM | ANGLES |
|-------------|----------|
| .X ± 0.25 | X' ± 2° |
| .XX ± 0.20 | .X' ± 1° |
| .XXX ± 0.05 | |

| | | |
|----------|----|----------|
| DRAWN | SS | 4/15/21 |
| CHECKED | SS | 4/15/21 |
| APPROVED | XX | XX/XX/XX |

THIS DRAWING CONTAINS INFORMATION THAT IS PROPRIETARY
AND SHOULD NOT BE USED WITHOUT PRIOR WRITTEN
PERMISSION FROM ADAM TECH.

**ADAM
TECH**

909 Rahway Avenue,
Union, NJ 07083
Phone: 908-687-5000
Fax: 908-687-5710

TITLE: UNIVERSAL SERIAL BUS, TYPE C, MALE PLUG,
SURFACE MOUNT, BLACK INSULATOR, WITH CAP
TRANSMISSION EFFICIENCY: 480Mbps

| | | |
|--------------|---------------------------------------|--------------|
| SIZE X | PART NO. USB-C20-PLUG-J-SMT-DC-T/R | REV. B |
| REF: S00005C | SCALE: NTS | SHEET 1 OF 1 |