

**FEATURES:**

- 2 Watt SIP Package
- 2:1 Wide Input Voltages
- Efficiency to 80%
- 100% Burned In
- UL 94V-0 Package Material
- Custom Solutions Available
- Regulated Output Types
- UL Recognized



**2 Watt DC-DC Converter**  
**RD72-24S05R**



**Wide Input Voltage Range**  
**2 Watt DC/DC Converter**

**Input Specifications**

Input Voltage:	24Vdc
Input Voltage Range:	18-36Vdc

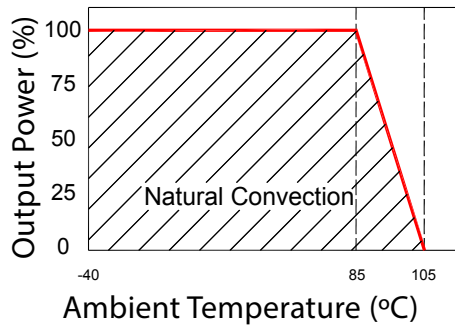
**Output Specifications**

Output Voltage:	±5Vdc	
Output Voltage Accuracy:	±3%	@Vout=4.85-5.15Vdc@Vin=18-36Vdc
Output Current:	400mA	
Efficiency:	80% TYP	
Ripple / Noise:	100mVp-p MAX	@20MHz Band width
Short Circuit Protection:	Continuous	@Automatics Recovery
Line Regulation:	±0.5% MAX	@LL to HL at full Load
Load Regulation:	±0.8% MAX	@0% to 100% FL

**General Specifications**

Operating Temperature Range:	-40°C ~ +85°C	
Storage Temperature:	-40°C ~ +100°C	
Switching Frequency:	200KHz TYP	
Humidity:	95% MAX	
Isolation Voltage:	1000Vdc	@Input to Output (60 sec/ 0.5mA)
Isolation Resistance:	1000MΩ MIN	@ 500Vdc
Cooling:	Free air convection	
MTBF:	>1,500,000 Hours	MIL-HDBK-217F@25°C, Ground Benign
Case Material:	DAP	
Weight:	4.5g TYP	
Remote Control:		
Turn On	0 ~ 0.8Vdc or open circuit	
Turn On	2.5 ~ 12Vdc	

**Temperature Derating Graph**

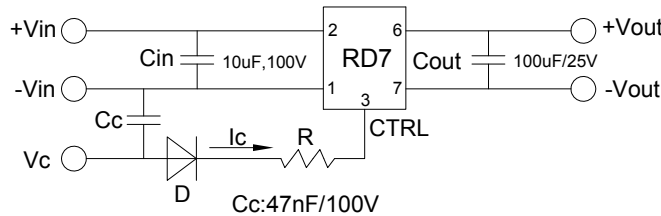


**Part Number**

**RD7** **2** - **24** **S** **05** **R**  
**A** **B** **C** **D** **E** **F**

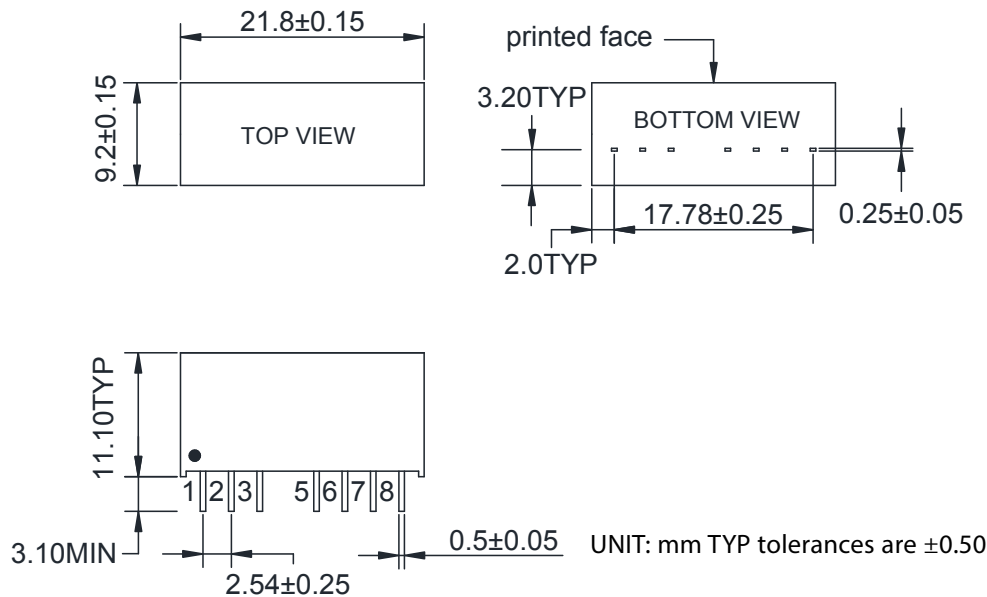
- A: Series
- B: Package (2)
- C: Input Voltage
- D: Single Output (S)
- E: Output Voltage
- F: Regulated (R)

**Recommended Test Circuit**



1. When open or high impedance, the converter works well; when this pin is 'high', the converter shuts down. It should be noted that the input current should be between 5-10mA, exceeding the maximum 20mA will cause permanent damage to the converter.
2. To make sure the product works at perfect operation status, a full loading external capacitor is necessary and it is recommended to use a high frequency low resistance electrolytic capacitor.

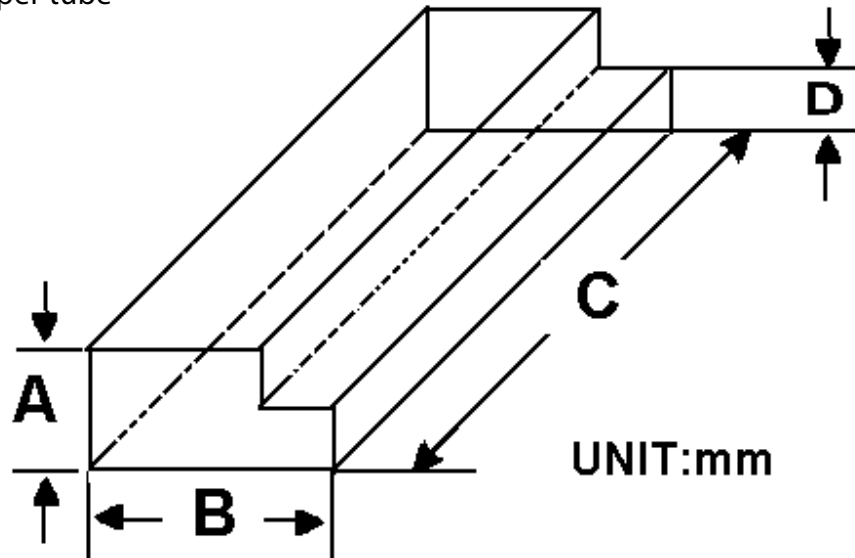
**Outline Dimensions**



Pin	1	2	3	5	6	7	8
Dual	-Vin	+Vin	Ctrl-Control input can (can be left open)	NC	+Vout	-Vout	COM

**Packaging Information**

Weight: 4.5 grams/pcs  
 TUBE: 22 pcs  
 Weight: 134.5g per tube



Size (mm)			
A	B	C	D
12.0	28.55	550	6.00

Outer carton unit: 1760pcs/80Tubes/box  
 Weight: 11.8 kg per carton

