

**FEATURES:**

- 3 Watt SIP Package
- 2:1 Wide Input Voltages
- Efficiency to 81%
- 100% Burned In
- UL 94V-0 Package Material
- Custom Solutions Available
- Regulated Output Types
- UL Recognized



**3 Watt DC-DC Converter**  
**RD7-24D103R**

**Wide Input Voltage Range**  
**3 Watt DC/DC Converter**



**Input Specifications**

<b>Input Voltage:</b>	24Vdc
<b>Input Voltage Range:</b>	18-36Vdc

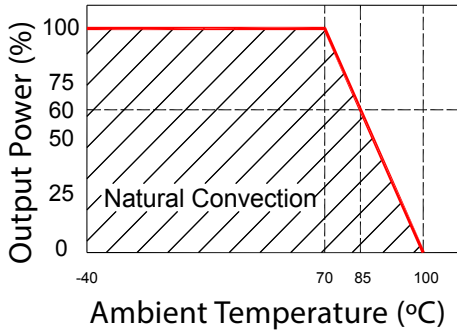
**Output Specifications**

<b>Output Voltage:</b>	±10Vdc	
<b>Output Voltage Accuracy:</b>	±2%	@Vout=±9.8~±10.2Vdc@Vin=18-36Vdc
<b>Output Current:</b>	±150mA	
<b>Efficiency:</b>	81% TYP	
<b>Ripple / Noise:</b>	100mVp-p MAX	@20MHz Band width
<b>Short Circuit Protection:</b>	Continuous	@Automatics Recovery
<b>Line Regulation:</b>	±0.5% MAX	@LL to HL at full Load
<b>Load Regulation:</b>	±1.0% MAX	@0% to 100% FL

**General Specifications**

<b>Operating Temperature Range:</b>	-40°C ~ +85°C	
<b>Storage Temperature:</b>	-40°C ~ +100°C	
<b>Switching Frequency:</b>	200KHz TYP	
<b>Humidity:</b>	95% MAX	
<b>Isolation Voltage:</b>	1500Vdc	@Input to Output (60 sec/ 0.5mA)
<b>Isolation Resistance:</b>	1000MΩ MIN	@ 500Vdc
<b>Cooling:</b>	Free air convection	
<b>MTBF:</b>	>1,500,000 Hours	MIL-HDBK-217F@25°C, Ground Benign
<b>Case Material:</b>	DAP	
<b>Weight:</b>	4.5g TYP	
<b>Remote Control:</b>		
Turn On	0 ~ 0.8Vdc or open circuit	
Turn On	2.5 ~ 12Vdc	

**Temperature Derating Graph**

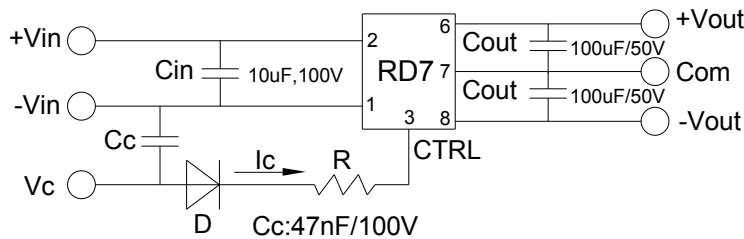


**Part Number**

$$\frac{RD7}{A} - \frac{24}{B} \frac{D}{C} \frac{10}{D} \frac{3}{E} \frac{R}{F}$$

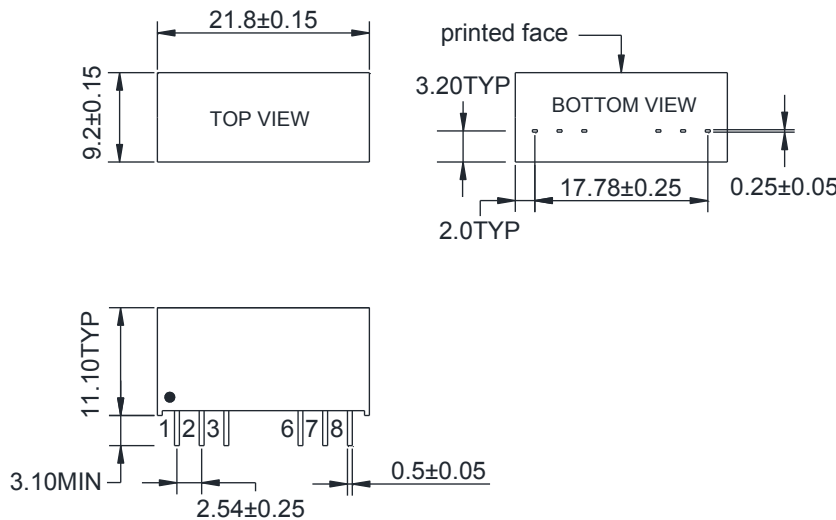
- A: Series
- B: Input Voltage
- C: Dual Output (D)
- D: Output Voltage
- E: Output Power
- F: Regulated (R)

**Recommended Test Circuit**



1. When open or high impedance, the converter works well; when this pin is 'high', the converter shuts down. It should be noted that the input current should be between 5-10mA, exceeding the maximum 20mA will cause permanent damage to the converter.
2. To make sure the product works at perfect operation status, a full loading external capacitor is necessary and it is recommended to use a high frequency low resistance electrolytic capacitor.

**Outline Dimensions**

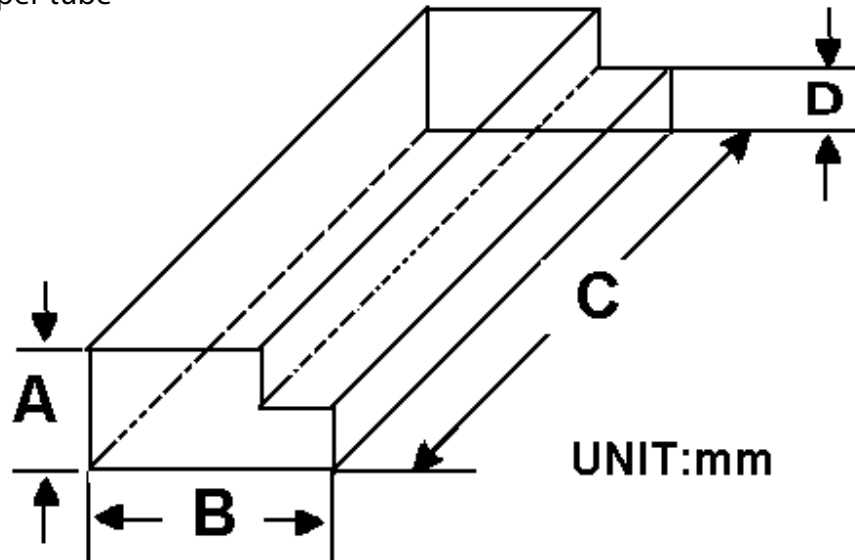


UNIT: mm TYP tolerances are ±0.50

Pin	1	2	3	6	7	8
Dual	-Vin	+Vin	Ctrl-Control input can (can be left open)	+Vout	COM	-Vout

**Packaging Information**

Weight: 4.5 grams/pcs  
 TUBE: 22 pcs  
 Weight: 134.5g per tube



Size (mm)			
A	B	C	D
12.0	28.55	550	6.00

Outer carton unit: 1760pcs/80Tubes/box  
 Weight: 11.8 kg per carton

