

FEATURES:

- 3 Watt SIP Package
- 2:1 Wide Input Voltages
- Efficiency to 75%
- 100% Burned In
- UL 94V-0 Package Material
- Custom Solutions Available
- Regulated Output Types
- UL Recognized



3 Watt DC-DC Converter
RD7-05S053R3

Wide Input Voltage Range
3 Watt DC/DC Converter



Input Specifications

| | |
|-----------------------------|----------|
| Input Voltage: | 5Vdc |
| Input Voltage Range: | 4.5-9Vdc |

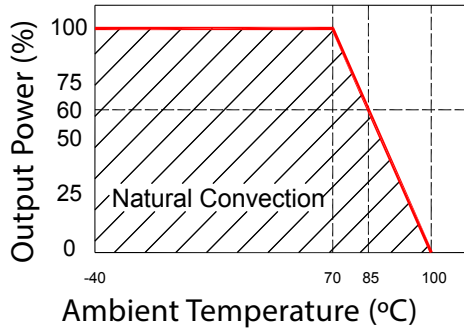
Output Specifications

| | | |
|----------------------------------|--------------|---------------------------------|
| Output Voltage: | ±5Vdc | |
| Output Voltage Accuracy: | ±3% | @Vout=4.85~5.15Vdc@Vin=4.5-9Vdc |
| Output Current: | 600mA | |
| Efficiency: | 75% TYP | |
| Ripple / Noise: | 100mVp-p MAX | @20MHz Band width |
| Short Circuit Protection: | Continuous | @Automatics Recovery |
| Line Regulation: | ±0.3% MAX | @LL to HL at full Load |
| Load Regulation: | ±0.8% MAX | @0% to 100% FL |

General Specifications

| | | |
|-------------------------------------|----------------------------|-----------------------------------|
| Operating Temperature Range: | -40°C ~ +85°C | |
| Storage Temperature: | -40°C ~ +100°C | |
| Switching Frequency: | 200KHz TYP | |
| Humidity: | 95% MAX | |
| Isolation Voltage: | 3000Vdc | @Input to Output (60 sec/ 0.5mA) |
| Isolation Resistance: | 1000MΩ MIN | @ 500Vdc |
| Cooling: | Free air convection | |
| MTBF: | >1,500,000 Hours | MIL-HDBK-217F@25°C, Ground Benign |
| Case Material: | DAP | |
| Weight: | 4.5g TYP | |
| Remote Control: | | |
| Turn On | 0 ~ 0.8Vdc or open circuit | |
| Turn On | 2.5 ~ 12Vdc | |

Temperature Derating Graph

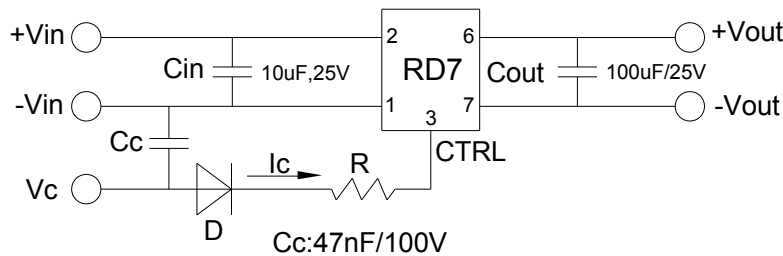


Part Number

RD7 - 05 S 05 3 R 3
A B C D E F G

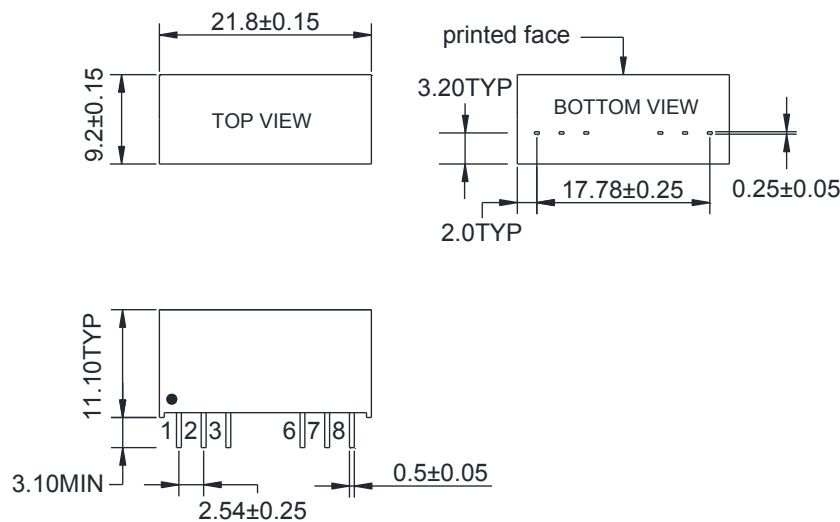
A: Series
B: Input Voltage
C: Single Output (S)
D: Output Voltage
E: Output Power
F: Regulated (R)
G: Isolation Voltage

Recommended Test Circuit



1. When open or high impedance, the converter works well; when this pin is 'high', the converter shuts down. It should be noted that the input current should be between 5-10mA, exceeding the maximum 20mA will cause permanent damage to the converter.
2. To make sure the product works at perfect operation status, a full loading external capacitor is necessary and it is recommended to use a high frequency low resistance electrolytic capacitor.

Outline Dimensions

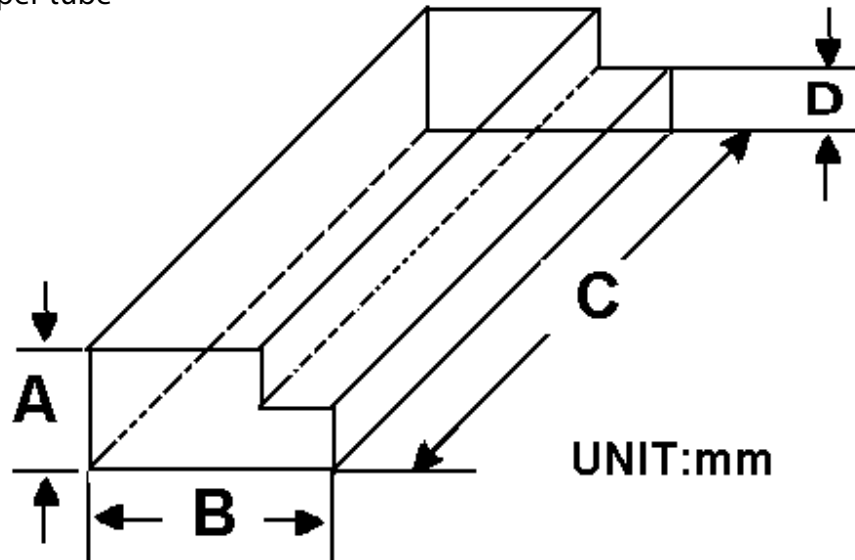


UNIT: mm TYP tolerances are ±0.50

| Pin | 1 | 2 | 3 | 6 | 7 | 8 |
|--------|------|------|-------------------------------------------|-------|-------|----|
| Single | -Vin | +Vin | Ctrl-Control input can (can be left open) | +Vout | -Vout | NC |

Packaging Information

Weight: 4.5 grams/pcs
 TUBE: 22 pcs
 Weight: 134.5g per tube



| Size (mm) | | | |
|-----------|-------|-----|------|
| A | B | C | D |
| 12.0 | 28.55 | 550 | 6.00 |

Outer carton unit: 1760pcs/80Tubes/box
 Weight: 11.8 kg per carton

