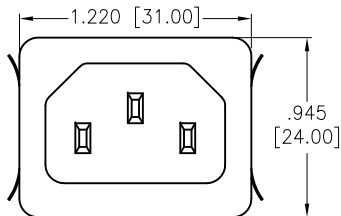


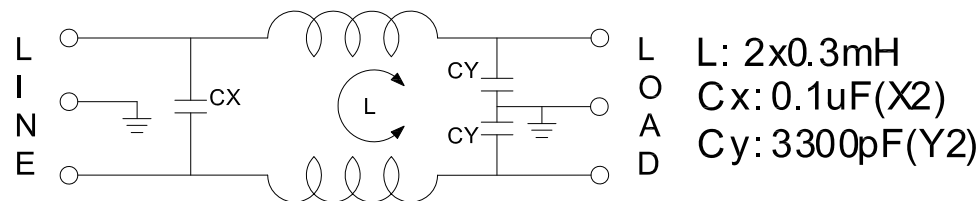
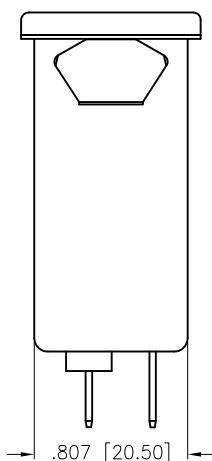
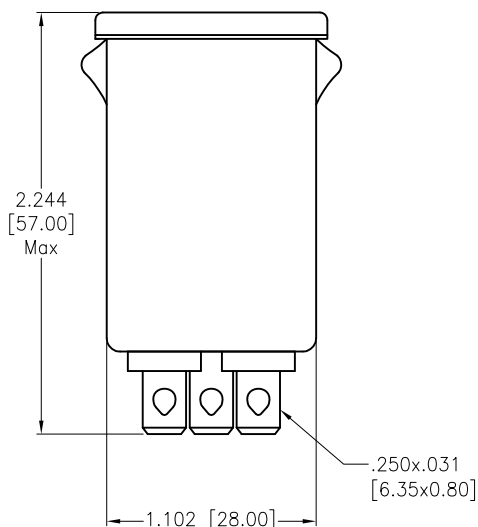
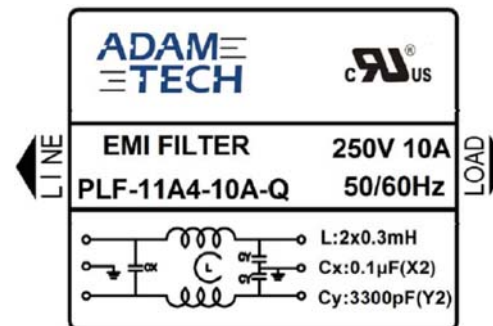
APPROVED: _____

DATE: _____ TITLE: _____

Rev	AWO #	Description	Date	Appr
-		RELEASED	5/29/23	



THICKNESS OF PANEL IS FROM 0.8mm TO 1.2mm
RECOMMENDED PANEL CUT



SPECIFICATIONS:

Electrical:

Voltage rating: 115/250 VAC
 Current rating: 115/250 VAC, 10A RMS max.
 Operating frequency: 50/60Hz
 Leakage Current: Each Line To Ground
 @115VAC/60Hz 0.4mA max
 @250VAC/50Hz 0.8mA max

Hipot Rating(For 1 Minute)

- A. Line to Ground: 2,250 VDC
- B. Line to Line: 1450 VDC

IR: 50 Mohm @500 VDC Any Input or Output to Ground

Temperature Rating:
 -25°C to +85°C

Environmental:

Lead free, RoHS compliant



UNLESS OTHERWISE SPECIFIED ALL DIMENSIONS ARE INCHES [MM]. TOLERANCES: EXCEPT AS NOTED

INCHES		HOLES	
.x	± .10	∅x	±.10
.xx	± .020	∅xx	±.015
.xxx	± .015	∅xxx	±.010

DRAWN	WX	5/29/23
CHECKED	RC	5/29/23
APPROVED		

THIS DRAWING CONTAINS INFORMATION THAT IS PROPRIETARY AND SHOULD NOT BE USED WITHOUT PRIOR WRITTEN PERMISSION FROM ADAM TECH



909 Rahway Avenue,
 Union, NJ 07083
 Phone: 908-687-5000
 Fax: 908-687-5710

TITLE		FILTERED POWER ENTRY MODULE, 115/250V AC, 10A, SNAP IN PANEL MOUNT	
SIZE	PART NO.	REF:	SHEET 1 OF 2
X	PLF-11A4-10A-Q	S00205C	NTS
REV.			
-			

6

5

4

3

2

1

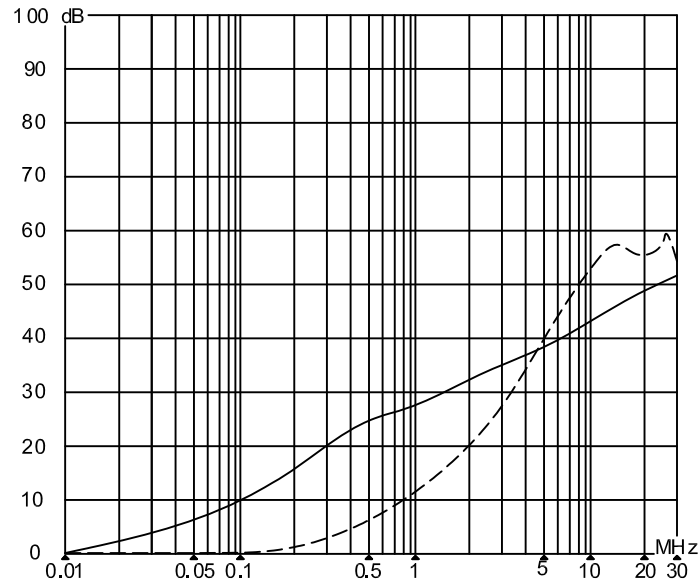
APPROVED: _____

DATE: _____ TITLE: _____

Rev	AWO #	Description	Date	Appr
SEE SHT 1 OF 2 FOR REVISION				

INSERTION LOSS(IN 50 ohm system according IEC/CISPR

————— common mode
 - - - - - differential mode




UNLESS OTHERWISE SPECIFIED ALL DIMENSIONS ARE INCHES [MM]. TOLERANCES: EXCEPT AS NOTED

INCHES		HOLES	
.x	± .10	∅x	±.10
.xx	± .020	∅xx	±.015
.xxx	± .015	∅xxx	±.010

DRAWN	WX	5/29/23
CHECKED	RC	5/29/23
APPROVED		

THIS DRAWING CONTAINS INFORMATION THAT IS PROPRIETARY AND SHOULD NOT BE USED WITHOUT PRIOR WRITTEN PERMISSION FROM ADAM TECH



909 Rahway Avenue,
 Union, NJ 07083
 Phone: 908-687-5000
 Fax: 908-687-5710

TITLE		FILTERED POWER ENTRY MODULE, 115/250V AC, 10A, SNAP IN PANEL MOUNT	
SIZE	PART NO.	REF:	SHEET 2 OF 2
X	PLF-11A4-10A-Q	S00205C	NTS
REV.			
-			

6

5

4

3

2

1