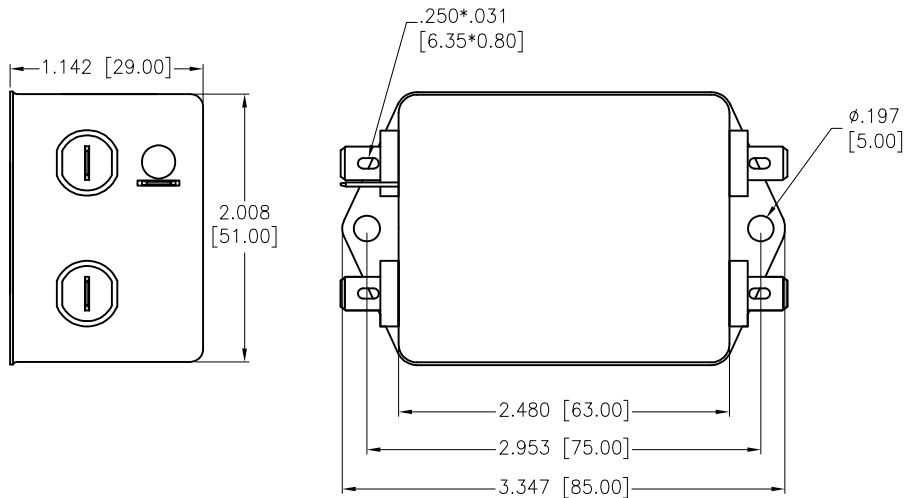



APPROVED: _____

DATE: _____ TITLE: _____

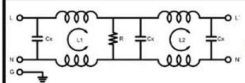
Rev	AWO #	Description	Date	Appr
-		RELEASED	11/7/22	
A		UPDATED TITLE	7/14/23	JJ/RC
B		ADEED SPEC.	7/26/23	LH/RC
C		UPDATED TITLE	8/4/23	JJ/RC



ADAM TECH 

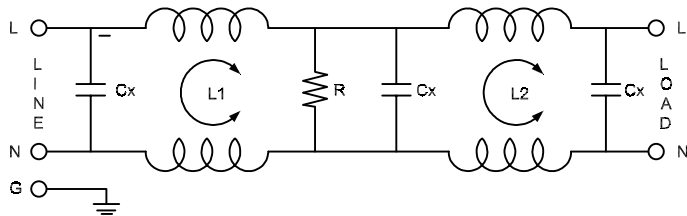
EMI FILTER 250V 6A
PLF-21D3-6A-Q-5 50/60Hz

L1/2: 2x6.5mH
Cx: 0.22 μ F(X2)
R: 1M ohm

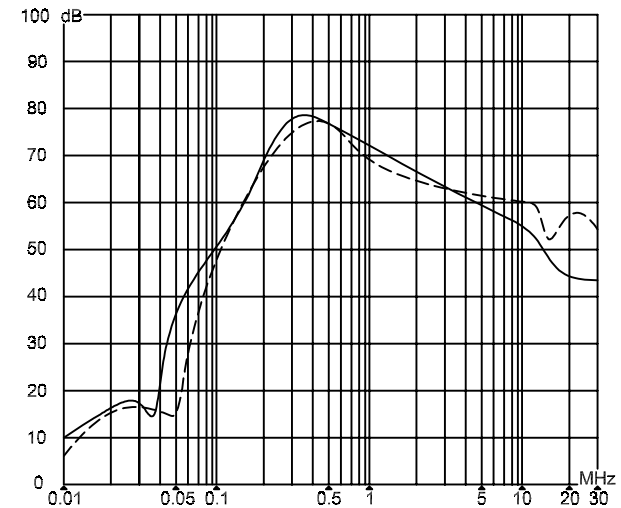


INSERTION LOSS (IN 50 ohm system according IEC/CISPR No.17):

_____ (common mode)
 _____ (differential mode)



L1/2: 2x6.5mH
 Cx: 0.22 μ F(X2)*3
 R: 1M ohm



SPECIFICATIONS:

Electrical:

Voltage rating: 115/250 VAC
 Current rating: 115/250 VAC: 6A RMS max
 Operating frequency: 50/60Hz
 Leakage Current: Each Line To Ground
 @115VAC/60HZ 2.0uA max
 @250VAC/50HZ 5.0uA max

Hipot Rating(For 1 Minute)

A. Line to Ground: 2,250 VDC
 B. Line to Line: 500 VDC

IR: 50 Mohm @500 VDC Any Input or Output to Ground

Temperature Rating:
 -25°C to +85°C

Environmental:

Lead free, RoHS compliant  , Medical Grade 

UNLESS OTHERWISE SPECIFIED ALL DIMENSIONS ARE INCHES [MM]. TOLERANCES: EXCEPT AS NOTED

INCHES		HOLES	
.x	$\pm .10$	ϕ x	$\pm .10$
.xx	$\pm .020$	ϕ xx	$\pm .015$
.xxx	$\pm .015$	ϕ xxx	$\pm .010$

ADAM TECH

909 Rahway Avenue,
 Union, NJ 07083
 Phone: 908-687-5000
 Fax: 908-687-5710

DRAWN	JJ	11/7/22
CHECKED	RC	11/7/22
APPROVED		

TITLE
**EMI/RFI POWER LINE FILTER, MEDICAL GRADE, 115/250VAC
 6A, MEDIUM OUTLINE, CHASSIS MOUNT**

THIS DRAWING CONTAINS INFORMATION THAT IS PROPRIETARY AND SHOULD NOT BE USED WITHOUT PRIOR WRITTEN PERMISSION FROM ADAM TECH

SIZE X	PART NO. PLF-21D3-6A-Q-5	REV. C
REF: S00205C	SCALE: NTS	SHEET 1 OF 1