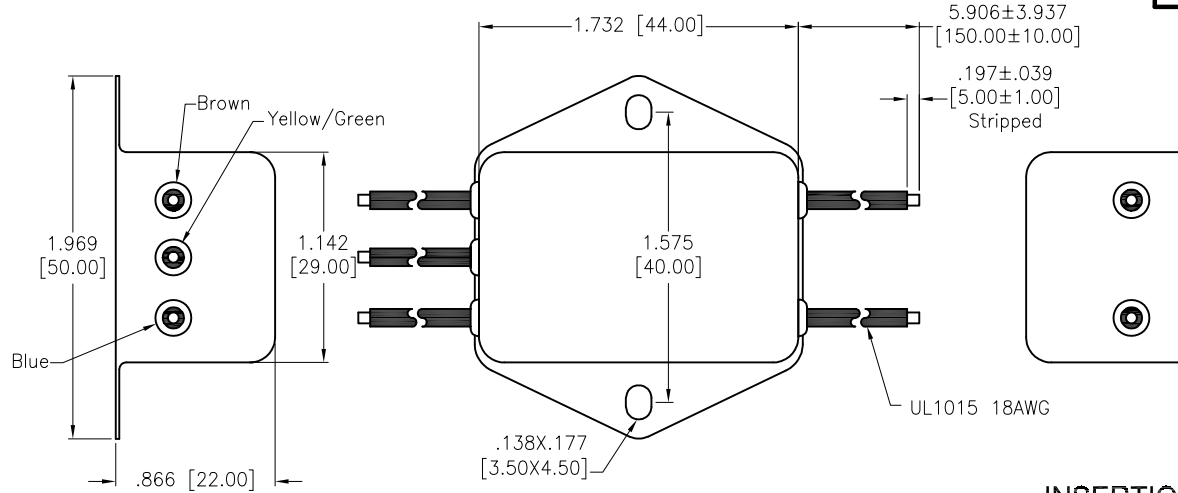


APPROVED: _____

DATE: _____ TITLE: _____

Rev	AWO #	Description	Date	Appr
-		RELEASED	11/7/22	
A		UPDATED TITLE	7/14/23	JJ/RC
B		ADDED SPEC.	7/26/23	LH/RC
C		UPDATED TITLE	8/4/23	JJ/RC



ADAM TECH

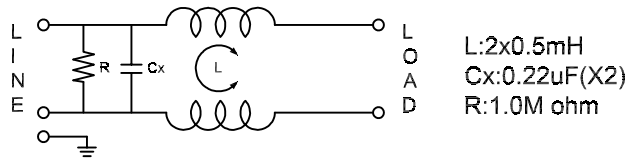
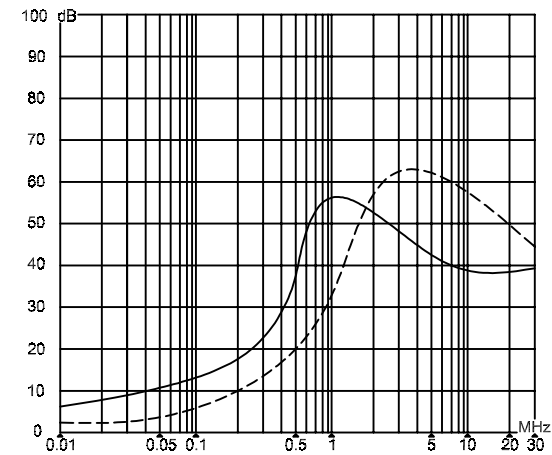
EMI FILTER 250V 10A

PLF-11E2-10A-W-R5 50/60Hz

L: 2x0.5mH
Cx: 0.22µF
R: 1M ohm

INSERTION LOSS (IN 50 ohm system according IEC/CISPR No.17)

————— (common mode)
- - - - - (differential mode)



SPECIFICATIONS:

Electrical:

- Voltage rating: 115/250 VAC
- Current rating: 115/250 VAC: 10A RMS max
- Operating frequency: 50/60Hz
- Leakage Current: Each Line To Ground
 - @115VAC/60HZ 2.0uA max
 - @250VAC/50HZ 5.0uA max

Hipot Rating(For 1 Minute)

- A. Line to Ground: 2,250 VDC
- B. Line to Line: 500 VDC

IR: 50 Mohm @500 VDC Any Input or Output to Ground

Temperature Rating:
-25°C to +85°C

Environmental:

Lead free, RoHS compliant , Medical Grade

UNLESS OTHERWISE SPECIFIED ALL DIMENSIONS ARE INCHES [MM]. TOLERANCES: EXCEPT AS NOTED

INCHES		HOLES	
.x	± .10	Øx	±.10
.xx	± .020	Øxx	±.015
.xxx	± .015	Øxxx	±.010

DRAWN	JJ	11/7/22
CHECKED	RC	11/7/22
APPROVED		

THIS DRAWING CONTAINS INFORMATION THAT IS PROPRIETARY AND SHOULD NOT BE USED WITHOUT PRIOR WRITTEN PERMISSION FROM ADAM TECH

ADAM TECH

909 Rahway Avenue,
Union, NJ 07083
Phone: 908-687-5000
Fax: 908-687-5710

TITLE		REF: S00205C	SCALE: NTS	SHEET 1 OF 1
EMI/RFI POWER LINE FILTER, MEDICAL GRADE 115/250VAC 10A, WIRE LEADS W/ CHASSIS MOUNT				
SIZE	PART NO.			
X	PLF-11E2-10A-W-R5			
REV.	C			