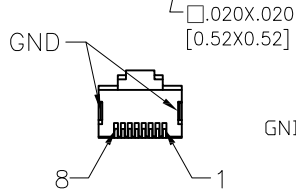
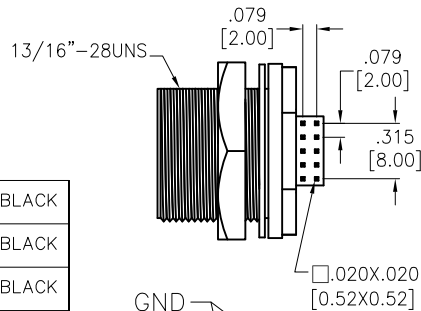
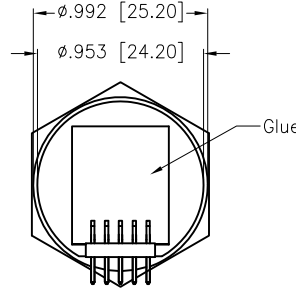
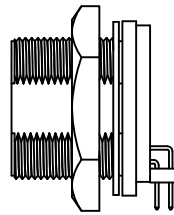
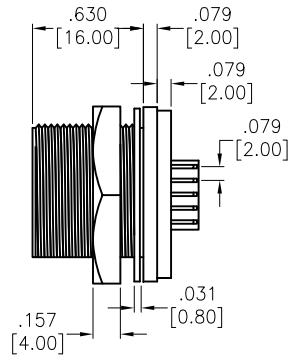
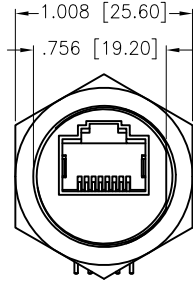
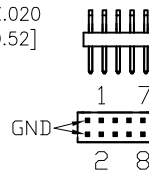


APPROVED: \_\_\_\_\_  
 DATE: \_\_\_\_\_ TITLE: \_\_\_\_\_

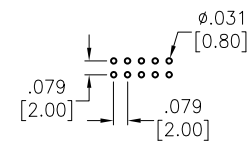
Rev	AWO #	Description	Date	Appr
-		RELEASED	8/31/16	



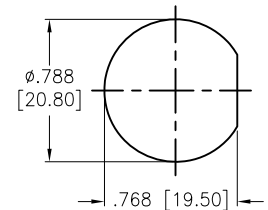
PIN ASSIGNMENT FRONT VIEW



PIN ASSIGNMENT REAR VIEW



RECOMMENDED PCB LAYOUT



RECOMMENDED PANEL CUT

SD-RPC-JTPC-PRX0-000  
 7=IP67

HEX NUT	NYLON+GF	BLACK
GASKET	EDPM	BLACK
CONNECTOR	R/A PIN HEADER, .079 [2.00] PITCH, 5P*2ROW	BLACK
PCB	FR4, DOUBLE SIDE, .039 [1.00] THICKNESS	
GROUND	GROUND CONTACT, SUS304	
CONTACT	RJ45 PIN, PHOS. BRONZE, 50u" GOLD	
CONNECTOR	RJ45 JACK, NYLON+GF	BLACK
PART NAME	DESCRIPTION	COLOR

Electrical:  
 Voltage rating: 150 VAC max  
 Current rating: 1 A  
 Contact resistance: 30 mohms max  
 Insulation resistance: 100 Mohms min  
 Dielectric withstanding voltage:  
 1,000 Vrms for 1 minute between Adjacent contacts  
 1,500 Vrms for 1 minute between Shield contacts

Temperature Rating:  
 Operating temperature: -25°C to +85°C  
 Environmental:  
 Lead free, RoHS compliant.



UNLESS OTHERWISE SPECIFIED  
 ALL DIMENSIONS ARE INCHES [MM]  
 TOLERANCES: EXCEPT AS NOTED

INCHES		HOLES	
.X	± .10	Ø.X	± .10
.XX	± .020	Ø.XX	± .015
.XXX	± .015	Ø.XXX	± .010

APPROVALS		DATE
DRAWN	HR	8/31/16
CHECKED	CK	8/31/16
APPROVED		

**ADAM TECH**

909 Rahway Avenue, Union, NJ 07083  
 Phone: 908-687-5000 Fax: 908-687-5710

TITLE: WATERPROOF CONNECTOR, RJ45 SOCKET,  
 C SIZE PLUG, SCREW TYPE, R/A PIN HEADER

SIZE X	PART NO. SD-RPC-JTPC-PRX0-000	REV. -
REF: S00200T	SCALE: NTS	SHEET 1 OF 1