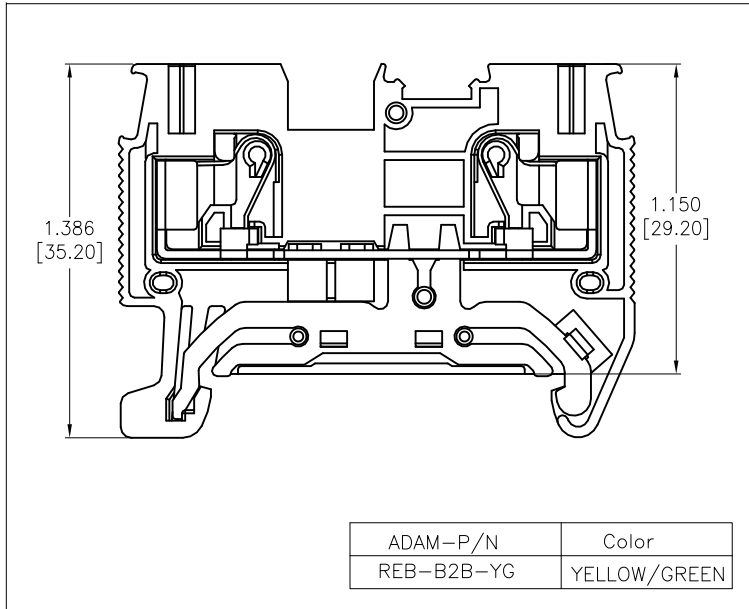


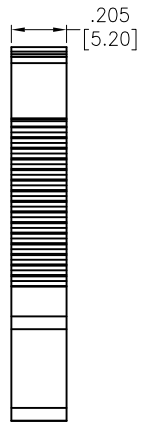
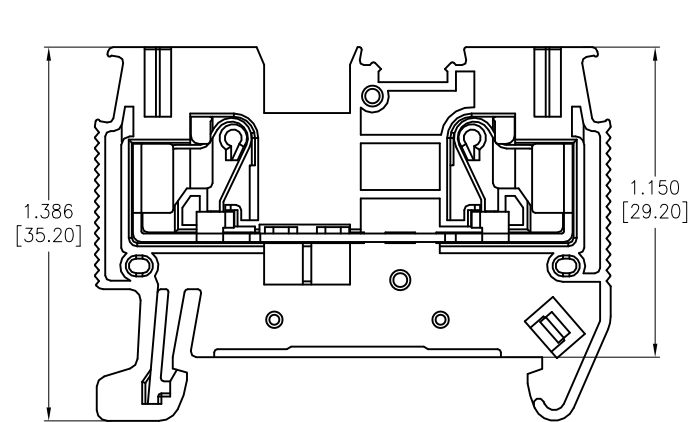
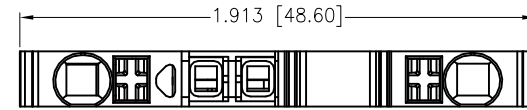
APPROVED: _____

DATE: _____ TITLE: _____

Rev	AWO #	Description	Date	Apr
-		RELEASED	10/7/22	
A		UPDATE SPEC.	9/8/23	LH/RC



ADAM-P/N	Color
REB-B2B-YG	YELLOW/GREEN

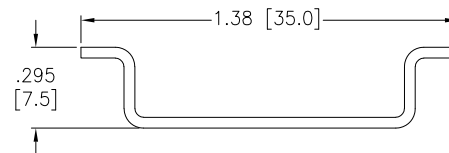


REB-B 2 B -XX

CSA (Cross Sectional Area)
Solid/Stranded
Solid: 24-12 Awg (0.2-4.0mm ²)
Stranded: 24-14 Awg (0.2-2.5mm ²)

Color
OR=Orange
BU=Blue
GY=Gray
YG=Yellow/Green

RECOMMENDED RAIL SIZE
35.0mm X 7.5mm



ADAM-P/N	Color
REB-B2B-OR	ORANGE
REB-B2B-BU	BLUE
REB-B2B-GY	GRAY
REB-B2B-YG	YELLOW/GREEN

SPECIFICATIONS:

Material:
 Insulator: PA66, rated UL 94V-0
 Insulator Color: See Chart
 Contacts: Copper Alloy, Tin Plated
Electrical:
 Voltage rating: 600 VAC
 Current rating: 20 Amp
 Dielectric withstanding voltage: 2200 VAC for 1 minute
Mechanical:
 Recommended Wire Size:
 Solid: 24-12AWG (0.2-4.0mm²)
 Stranded: 24-14AWG (0.2-2.5mm²)
 Stripping Length: .315"~.394" (8-10mm)
 Temperature Rating:
 Operating temperature: -40°C to +105°C
Environmental:
 Lead free, RoHS compliant.



UNLESS OTHERWISE SPECIFIED ALL DIMENSIONS ARE INCHES [MM]. TOLERANCES: EXCEPT AS NOTED		
INCHES		HOLES
.X ± .10	ØX ± .10	
.XX ± .020	ØXX ± .015	
.XXX ± .015	ØXXX ± .010	
DRAWN	WX	10/7/22
CHECKED	RC	10/7/22
APPROVED		
THIS DRAWING CONTAINS INFORMATION THAT IS PROPRIETARY AND SHOULD NOT BE USED WITHOUT PRIOR WRITTEN PERMISSION FROM ADAM TECH		

ADAM TECH 909 Rahway Avenue,
 Union, NJ 07083
 Phone: 908-687-5000
 Fax: 908-687-5710

TITLE DIN RAIL TERMINAL BLOCKS, GUV 2 HOLE, 24-12 AWG		
SIZE X	PART NO. REB-B2B-XX	REV. A
REF: S00067C	SCALE: NTS	SHEET 1 OF 1