

APPROVED: _____

DATE: _____ TITLE: _____

Rev	AWO #	Description	Date	Appr
-		RELEASED	8/16/21	
A		UPDATE DRAWING	12/19/23	LH/LL1

MMI-P1SRXXXXSXX

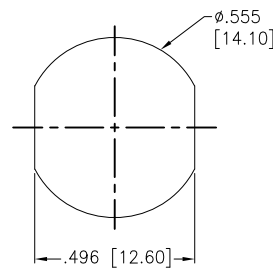
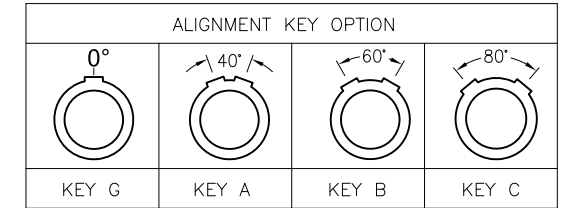
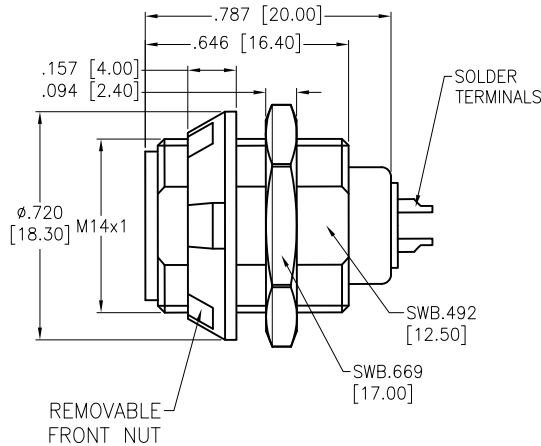
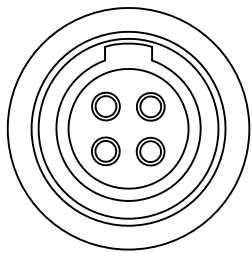
SIZE
1

ALIGNMENT KEY
G = 0°
A = 40°
B = 60°
C = 80°

BODY COLOR
B = BLACK
G = GRAY

FRONT NUT COLOR
B = BLACK
G = GRAY
GR = GREEN
Y = YELLOW
R = RED

OF POSITIONS



RECOMMENDED
PANEL CUT-OUT
(Front or Rear Panel mounting)

SPECIFICATIONS:

Material:
 Housing (Body): PC
 Insulator: PPS
 Terminal: Brass, Gold Plated
 Electrical:
 Voltage Rating: See chart
 Current Rating: See chart
 Dielectric withstanding voltage: See chart
 Electrical Life: 1,000 Cycles min.
 Temperature Rating:
 Operating temperature: -55°C to +118°C
 Environmental:
 IP50 Protection (Mated Condition)
 Lead free, RoHS compliant



Configuration	Size 1									
	2 Pin	3 Pin	4 Pin	5 Pin	6 Pin	7 Pin	8 Pin	9 Pin	10 Pin	14 Pin
Diameter of Pin	1.3	1.3	0.9	0.9	0.7	0.7	0.7	0.5	0.5	0.5
Testing Voltage	1100V	1100V	950V	950V	950V	950V	950V	750V	750V	500V
Working Voltage	300V	300V	250V	250V	200V	200V	200V	200V	200V	200V
Rated Current / Pin	9A	8A	7A	6A	5A	4A	4A	2.5A	2.5A	1.5A

UNLESS OTHERWISE SPECIFIED
 ALL DIMENSIONS ARE INCHES [MM]
 TOLERANCES: EXCEPT AS NOTED
 INCHES HOLES

.X ± .10	Ø.X ± .10
.XX ± .020	Ø.XX ± .015
.XXX ± .015	Ø.XXX ± .010



909 Rahway Avenue,
 Union, NJ 07083
 Phone: 908-687-5000
 Fax: 908-687-5710

APPROVALS		DATE
DRAWN	SS	8/16/21
CHECKED	SS	8/16/21
APPROVED		

TITLE			
PUSH-PULL SOCKET, VERTICAL, SIZE 1, PLASTIC BODY, REAR PANEL MOUNT, SOLDER TERMINAL, IP50			
SIZE X	PART NO. MMI-P1SRXXXXSXX	REV. A	
REF: S00210C	SCALE: NTS	SHEET 1 OF 1	