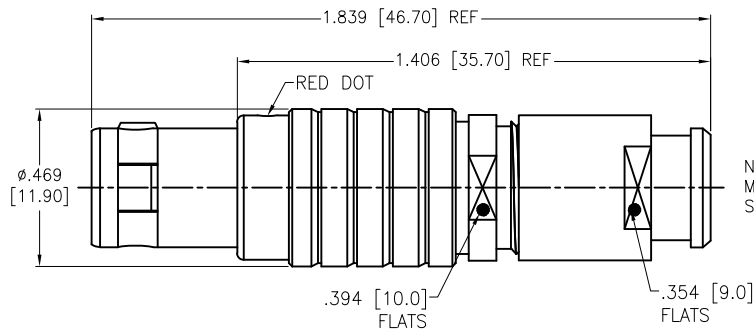


APPROVED: _____
 DATE: _____ TITLE: _____

Rev	AWO #	Description	Date	Appr
-		RELEASED	8/16/21	
A		UPDATE DRAWING	3/2/23	LH/AC1
B		UPDATED SPEC.	3/16/23	JJ/KC
C		UPDATED DRAWING	7/11/23	WX/LL1



NOTE; BEND RELIEF
 MUST BE ORDERED
 SEPARATELY

MMI-M1PXXXXXXB

ALIGNMENT KEY

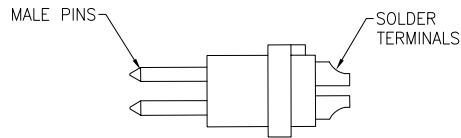
- G = 0°
- A = 30°
- B = 60°
- C = 90°

CABLE COLLET SIZE

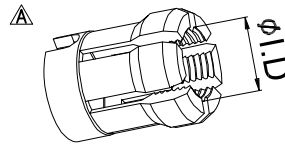
- 42 = 3.2mm ~ 4.2mm ID
- 52 = 4.2mm ~ 5.2mm ID
- 62 = 5.2mm ~ 6.2mm ID
- 72 = 6.2mm ~ 7.2mm ID

OF POSITIONS

- 02, 03, 04, 05, 06,
- 07, 08, 10, 14 & 16

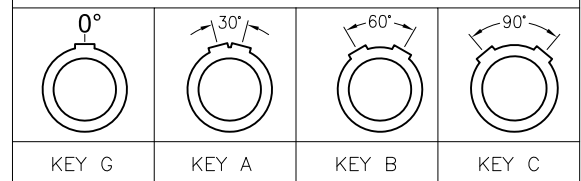


DETAIL



CABLE COLLET

ALIGNMENT KEY OPTION



SPECIFICATIONS:

Material:
 Housing (Body): Brass, Natural Chrome plated
 Insulator: PPS
 Terminal: Brass, Gold Plated
 Electrical:
 Voltage Rating: Refer to chart
 Current Rating: See chart
 Dielectric withstanding voltage: See chart
 Electrical Life: 5,000 Cycles min.
 Temperature Rating:
 Operating temperature: -55°C to +150°C
 Environmental:
 IP50 Protection (Mated Condition)
 Lead free, RoHS compliant



	2 Pin	3 Pin	4 Pin	5 Pin	6 Pin	7 Pin	8 Pin	10 Pin	14 Pin	16 Pin
Configuration										
Diameter of Pin	Ø1.3	Ø1.3	Ø0.9	Ø0.9	Ø0.7	Ø0.7	Ø0.7	Ø0.5	Ø0.5	Ø0.5
Testing Voltage	1350V	1300V	1350V	1150V	1050V	950V	950V	900V	800V	800V
Rated Current / Pin	9A	9A	8A	7A	5A	5A	5A	2A	2A	2A
Max. Wire Awg	20	20	22	22	24	24	24	28	28	28

UNLESS OTHERWISE SPECIFIED ALL DIMENSIONS
 ARE INCHES [MM]. TOLERANCES: EXCEPT AS NOTED

INCHES	HOLES
.X ± .10	Ø.X ± .10
.XX ± .020	Ø.XX ± .015
.XXX ± .015	Ø.XXX ± .010



909 Rahway Avenue,
 Union, NJ 07083
 Phone: 908-687-5000
 Fax: 908-687-5710

DRAWN	SS	8/16/21
CHECKED	SS	8/16/21
APPROVED		

TITLE: PUSH-PULL CONNECTOR MALE PLUG, METAL,
 SIZE 1, SOLDER TERMINAL, BEND RELIEF TYPE, IP50

THIS DRAWING CONTAINS INFORMATION THAT IS PROPRIETARY
 AND SHOULD NOT BE USED WITHOUT PRIOR WRITTEN
 PERMISSION FROM ADAM TECH

SIZE X	PART NO. MMI-M1PXXXXXXB	REV. C
REF: S00210C	SCALE: NTS	SHEET 1 OF 1