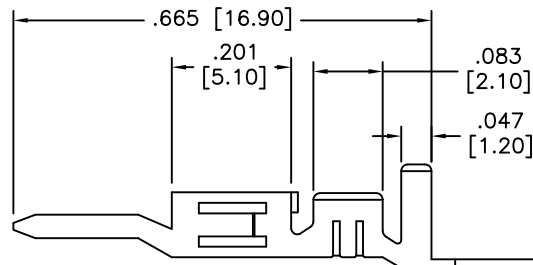
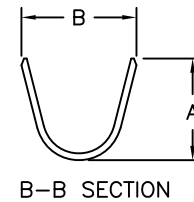
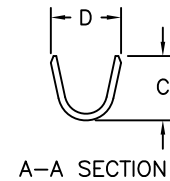
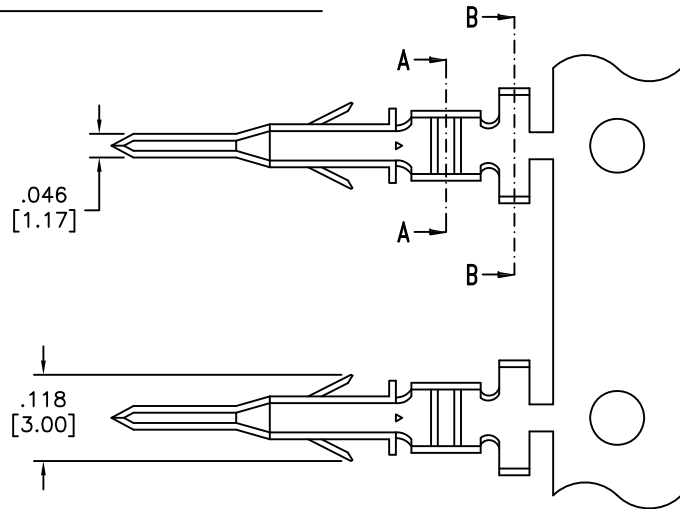


APPROVED: _____
 DATE: _____ TITLE: _____

Rev	AWO #	Description	Date	Appr
-		RELEASED	3/13/06	
A		REDRAWN	11/4/14	AY/LL
B		UPDATE DRAWING	5/16/19	OW/TW



(Chart Dim. TOLERANCES: ±.016 [0.40])

PART #	WIRE AWG	DIM. A	DIM. B	DIM. C	DIM. D
DMF-A-C-M-R	22 ~ 28	.091 [2.30]	.110 [2.80]	.071 [1.80]	.065 [1.65]
DMF-B-C-M-R	18 ~ 24	.177 [4.50]	.142 [3.60]	.091 [2.30]	.075 [1.90]
DMF-C-C-M-R	16	.177 [4.50]	.142 [3.60]	.114 [2.90]	.091 [2.30]

WIRE SIZE	CIRCUITS			
	AWG	2	4~6	8~10
18	9 A	8 A	7 A	6 A
20	7 A	6 A	5 A	5 A
22	5 A	4 A	4 A	4 A
24	4 A	3 A	3 A	3 A

SPECIFICATIONS:

Material:
 Contacts: Brass
 Plating:
 Tin over Copper underplate overall
 Electrical:

Voltage rating: 600 VAC/DC
 Current rating: / Contact (See Chart)
 Contact resistance: 10 mohms max initial
 20 mohms max testing
 Crimp resistance: 5 mohms max
 Temperature Rating:
 -40°C to +105°C
 Environmental:
 Lead free, RoHS compliant.



UNLESS OTHERWISE SPECIFIED
 ALL DIMENSIONS ARE MM [INCHES]
 TOLERANCES: EXCEPT AS NOTED
 INCHES HOLES
 .X ± .10 ØX ± .10
 .XX ± .020 ØXX ± .015
 .XXX ± .015 ØXXX ± .010

APPROVALS		DATE
DRAWN	BAS	3/13/06
CHECKED		
APPROVED		

ADAM TECH
 INTERCONNECTS
 909 Rahway Avenue,
 Union, NJ 07083
 Phone: 908-687-5000
 Fax: 908-687-5710

TITLE			
CRIMP CONTACT, DMF SERIES, MALE, TIN PLATED, ON REELS			
SIZE	PART NO.	REV.	
X	DMF-X-C-M-R	B	
REF:	S00123T	SCALE: NTS	SHEET 1 OF 1