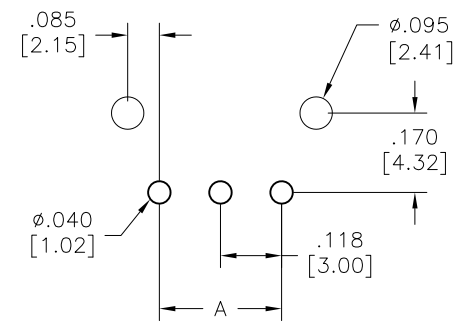
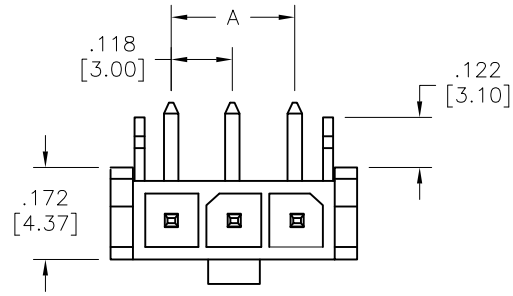
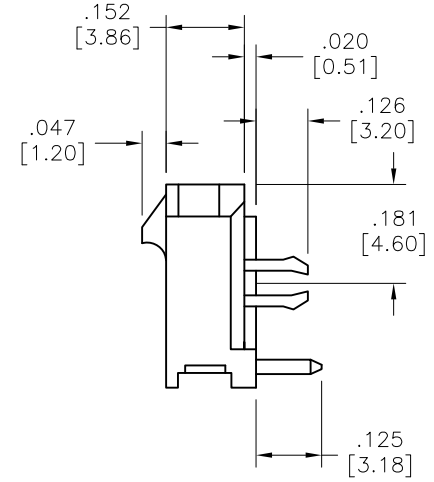
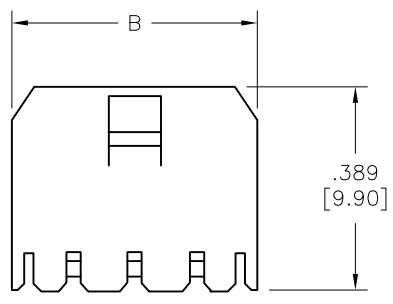


APPROVED: \_\_\_\_\_  
 DATE: \_\_\_\_\_ TITLE: \_\_\_\_\_

Rev	AWO #	Description	Date	Appr
-		RELEASED	5/9/12	
A		UPDATE DIM.& SPEC.	9/26/18	AY/SL
B		UPDATE DIM.& SPEC.	3/17/20	OW/IW



RECOMMENDED PCB LAYOUT



POSITIONS	Dimension	
	A	B
2	.118 [3.00]	.380 [9.65]
3	.236 [6.00]	.498 [12.65]
4	.354 [9.00]	.616 [15.65]
5	.472 [12.00]	.734 [18.65]
6	.591 [15.00]	.852 [21.65]
7	.709 [18.00]	.970 [24.65]
8	.827 [21.00]	1.089 [27.65]
9	.945 [24.00]	1.207 [30.65]
10	1.063 [27.00]	1.325 [33.65]
11	1.181 [30.00]	1.443 [36.65]
12	1.299 [33.00]	1.561 [39.65]

**SPECIFICATIONS:**

Material:  
 Insulator: LCP, rated UL 94V-0  
 Insulator color: Black  
 Contacts: Brass

**Plating:**  
 Tin over Copper underplate overall

**Electrical:**  
 Voltage rating: 250 V  
 Current rating: 5 Amps max.  
 Contact resistance: 10 mohms max.  
 Dielectric withstanding voltage: 1500 VAC for 1 minute

**Environmental:**  
 Lead free, RoHS compliant.



UNLESS OTHERWISE SPECIFIED  
 ALL DIMENSIONS ARE INCHES [MM]  
 TOLERANCES: EXCEPT AS NOTED

INCHES		HOLES	
.X	± .10	Ø.X	± .10
.XX	± .020	Ø.XX	± .015
.XXX	± .015	Ø.XXX	± .010

**ADAM TECH INTERCONNECTS**  
 909 Rahway Avenue,  
 Union, NJ 07083  
 Phone: 908-687-5000  
 Fax: 908-687-5710

APPROVALS		DATE
DRAWN	AY	5/9/12
CHECKED	OC	5/9/12
APPROVED		

TITLE			
.118" [3.00MM] PITCH, PCB MOUNT HOUSING & TERMINAL RIGHT ANGLE, BOARD LOCKS			
SIZE	PART NO.	REV.	
X	DML-1-XX-A-H-T-A-BL	B	
REF:	S00123T	SCALE:	NTS
		SHEET 1 OF 1	