

6

5

4

3

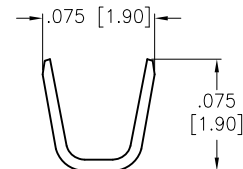
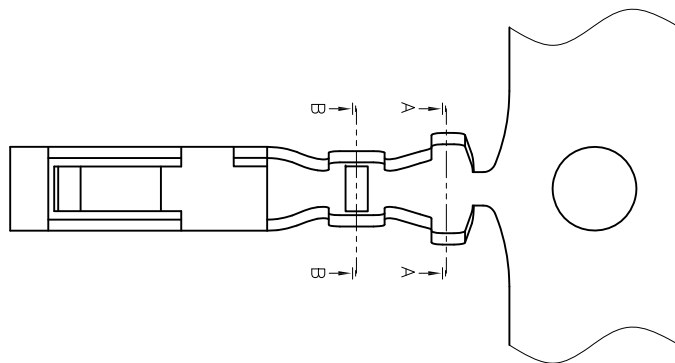
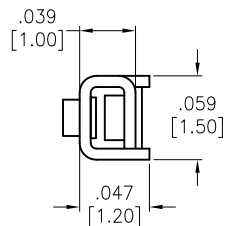
2

1

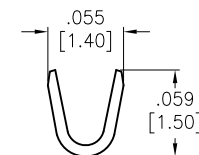
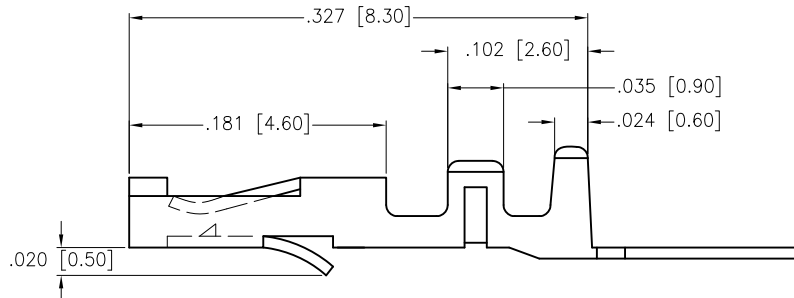
APPROVED: \_\_\_\_\_

DATE: \_\_\_\_\_ TITLE: \_\_\_\_\_

Rev	AWO #	Description	Date	Appr
-		RELEASED	2/24/16	



SECTION A-A



SECTION B-B

A

SPECIFICATIONS:  
 Material: Brass  
 Plating: Tin Plated  
 Thickness: 0.20mm  
 Wire Range: AWG#24~#28  
 Insulation O.D: 1.10~1.50mm  
 Environmental:  
 Lead free, RoHS compliant.



UNLESS OTHERWISE SPECIFIED  
 ALL DIMENSIONS ARE INCHES [MM]  
 TOLERANCES: EXCEPT AS NOTED  
 INCHES HOLES  
 .X ± .10 Ø.X ± .10  
 .XX ± .020 Ø.XX ± .015  
 .XXX ± .015 Ø.XXX ± .010

# ADAM TECH

909 Rahway Avenue, Union, NJ 07083  
 Phone: 908-687-5000 Fax: 908-687-5710

APPROVALS		DATE
DRAWN	HR	2/24/16
CHECKED	TW	2/24/16
APPROVED		

TITLE .079 [2.00] PITCH FEMALE TERMINAL FOR P/N: 2CH-Y-XX		
SIZE X	PART NO. 2CTY-R	REV. -
REF: S00016T	SCALE: NTS	SHEET 1 OF 1

6

5

4

3

2

1