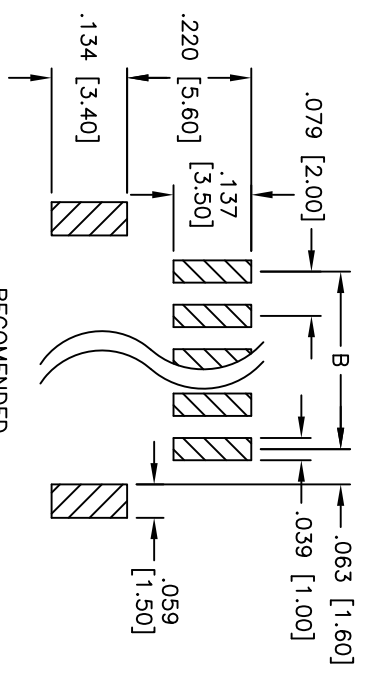
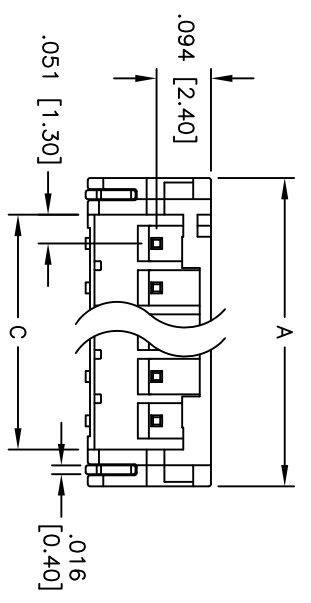
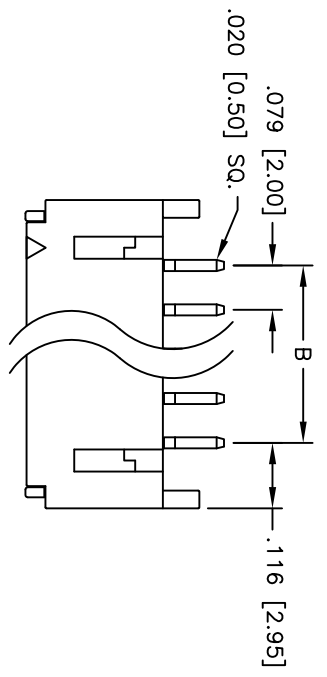
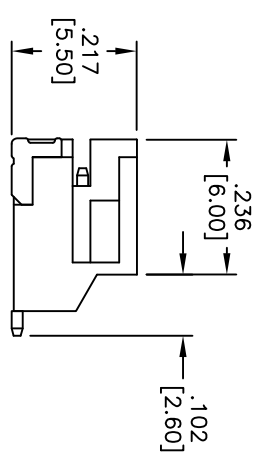


APPROVED: _____
 DATE: _____ TITLE: _____



RECOMMENDED
PCB LAYOUT



PACKAGED ON TAPE & REEL

Positions: 2 thru 16
 A = .079 [2.00] x No. of Positions + .153 [3.90]
 B = .079 [2.00] x No. of Spaces
 C = .079 [2.00] x No. of Positions + .024 [0.60]

ADAM TECH

909 Railway Avenue, Union, NJ 07083
 Phone: 908-687-5000 Fax: 908-687-5710

.079 [2.00] SHROUNDED HEADER
RIGHT ANGLE, SURFACE MOUNT

SPECIFICATIONS:

Material: Insulator: Hi-temp thermoplastic, rated UL 94V-0
 Insulator color: White
 Contacts: Brass
 Plating: Tin over Copper underplate overall
 Electrical: Operating voltage: 100 VAC max
 Current rating: 2 Amps max
 Contact resistance: 10 mohms max
 Insulation resistance: 1,000 Mohms min @ 500 VDC
 Dielectric withstanding voltage: 1,000 VAC for 1 minute
 Temperature Rating: Operating temperature: -25°C to +85°C
 Environmental: Lead free, RoHS compliant



Rev	AWO #	Description	Date	Appr
-	-	RELEASED	12/15/06	
A		REVISED SPEC	8/5/11	

UNLESS OTHERWISE SPECIFIED ALL DIMENSIONS ARE IN INCHES [MM]		TOLERANCES: EXCEPT AS NOTED	
INCHES		HOLDS	
.X	± .10	ØX	± .10
.XX	± .020	ØXXX	± .015
.XXX	± .015	ØXXXX	± .010
APPROVALS		DATE	
DRAWN	BW	12/15/06	
CHECKED			
APPROVED			
TITLE		SIZE	PART NO.
.079 [2.00] SHROUNDED HEADER		X	2SH-C-XX-TR-SMT-T/R
RIGHT ANGLE, SURFACE MOUNT		REF:	S00015T
ADAM TECH		SCALE:	NTS
909 Railway Avenue, Union, NJ 07083		SHEET	1 OF 1
Phone: 908-687-5000 Fax: 908-687-5710		REV	A