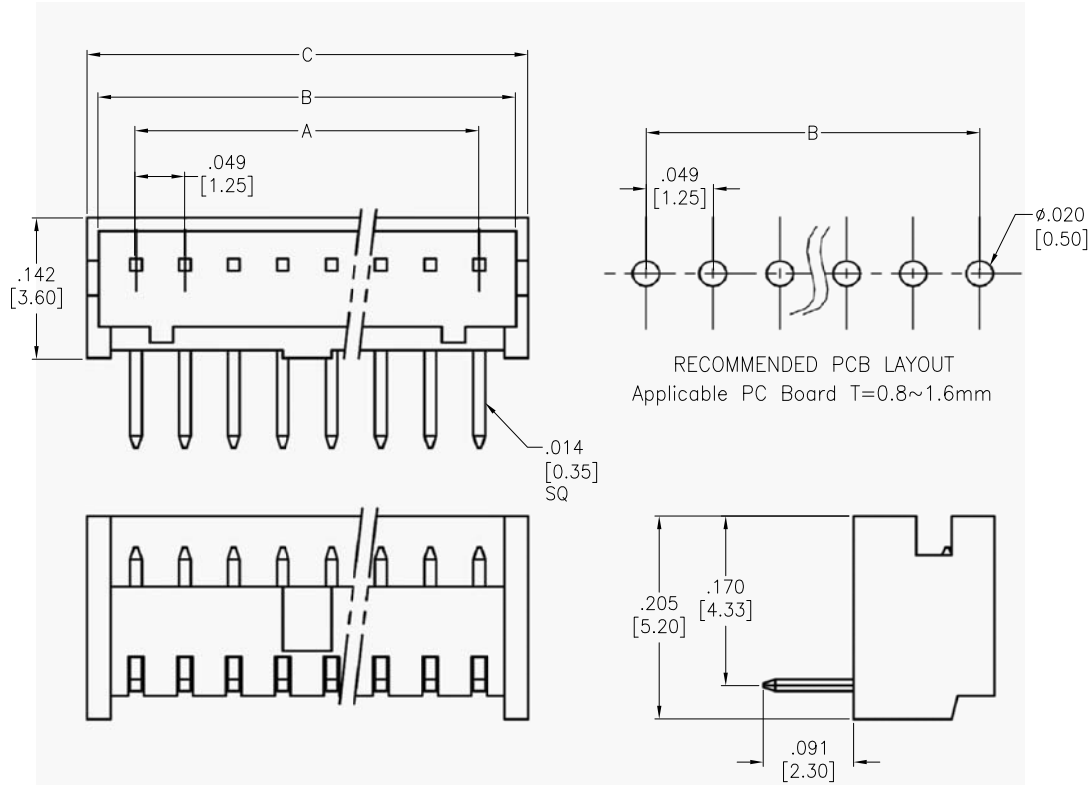


APPROVED: _____
 DATE: _____ TITLE: _____

Rev	AWO #	Description	Date	Appr
-		RELEASED	01/17/07	
A		UPDATED DRAWING	2/21/17	HR/CH
B		UPDATED DRAWING	6/4/19	AY/IL



RECOMMENDED PCB LAYOUT
 Applicable PC Board T=0.8~1.6mm

Positions: 02 thru 15, 20, 25, 30
 A = .049 [1.25] x No. of Space
 B = .049 [1.25] x No. of Positions + .026 [0.65]
 C = .049 [1.25] x No. of Positions + .049 [1.25]

SPECIFICATIONS:

Material:
 Insulator: Nylon 66, rated UL 94V-0
 Insulator color: Beige
 Contacts: Brass

Plating:
 Tin over Nickel underplate overall

Electrical:
 Voltage rating: 250V AC/DC
 Current rating: 1A AC/DC
 Contact resistance: 10 mohms max Initial
 30 mohms max After
 Insulation resistance: 1000 Mohms min
 Dielectric withstanding voltage: 500 VAC for 1 minute

Temperature Rating:
 -25°C to +85°C

Environmental:
 Lead free, RoHS compliant.



UNLESS OTHERWISE SPECIFIED ALL DIMENSIONS ARE INCHES [MM] TOLERANCES: EXCEPT AS NOTED			
INCHES		HOLES	
.X	± .10	∅X	± .10
.XX	± .020	∅XX	± .015
.XXX	± .015	∅XXX	± .010

ADAM TECH
INTERCONNECTS
 909 Rahway Avenue,
 Union, NJ 07083
 Phone: 908-687-5000
 Fax: 908-687-5710

APPROVALS		DATE
DRAWN	BW	01/17/07
CHECKED		
APPROVED		

TITLE 1.25MM PITCH WAFER, DIP TYPE, RIGHT ANGLE, TIN PLATED			
SIZE X	PART NO. 125SH-C-XX-TR	REV. B	
REF: S00099T	SCALE: NTS	SHEET 1 OF 1	