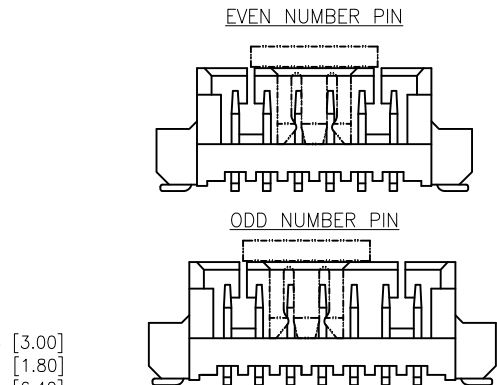
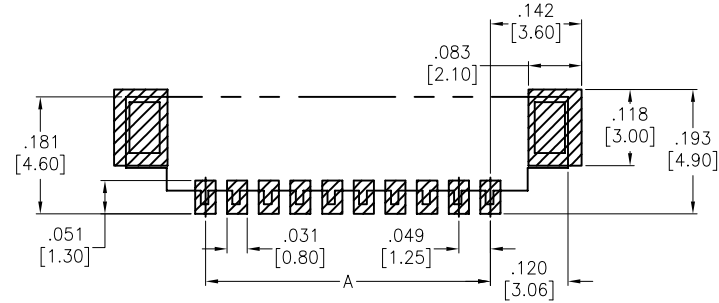
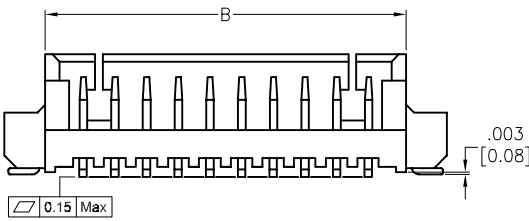
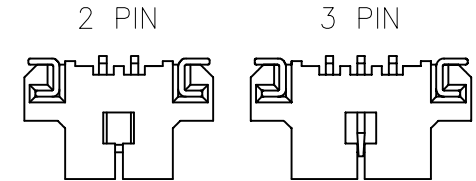
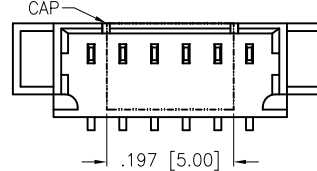
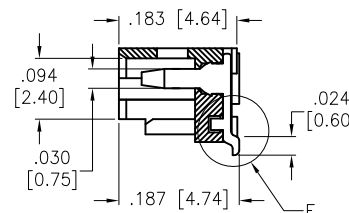
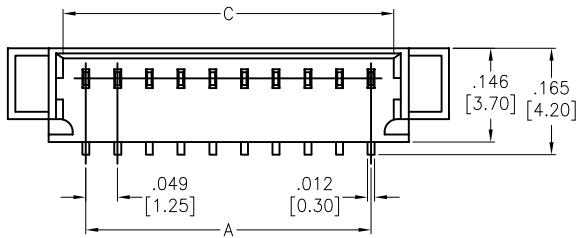
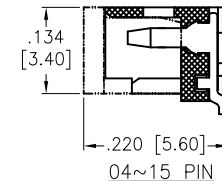
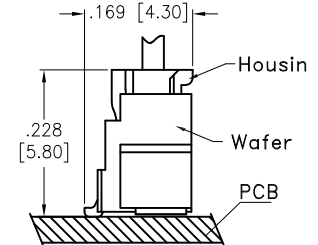
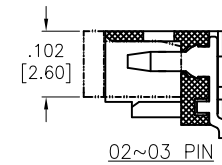
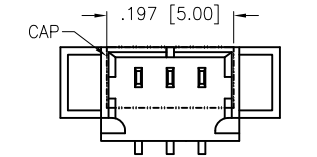
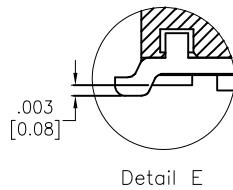
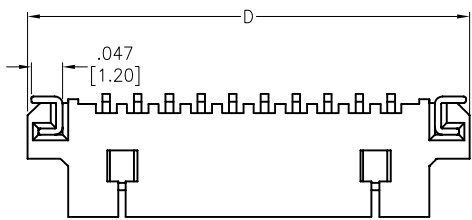


APPROVED: _____
 DATE: _____ TITLE: _____

Rev	AWO #	Description	Date	Appr
-		RELEASED	9/11/14	
A		UPDATED CAP SHAPE	8/30/17	HR/RC1
B		UPDATE DRAWING	7/29/19	AY/NL
C		UPDATED CAP DIM.	4/24/20	AY/NL



SPECIFICATIONS:

Material:
 Insulator: Hi-temp thermoplastic, rated UL 94V-0
 Insulator color: Nature
 Contacts: Brass, Tin plated
 Solder nail: Brass

Electrical:
 Current rating: 1A AC/DC
 Contact resistance: 20 mohms max
 Insulation resistance: 100 Mohms min
 Withstanding voltage: 250 VAC for 1 minute

Temperature Rating:

-40°C to +85°C
 Environmental:
 Lead free, RoHS compliant

PACKAGED ON TAPE & REEL

Positions: 2 thru 15
 A= .049 [1.25] x No. of Spaces
 B= .049 [1.25] x No. of Spaces +.118 [3.00]
 C= .049 [1.25] x No. of Spaces +.071 [1.80]
 D= .049 [1.25] x No. of Spaces +.252 [6.40]

UNLESS OTHERWISE SPECIFIED
 ALL DIMENSIONS ARE INCHES [MM]
 TOLERANCES: EXCEPT AS NOTED

INCHES		HOLES	
.X	± .10	Ø.X	± .10
.XX	± .020	Ø.XX	± .015
.XXX	± .015	Ø.XXX	± .010

ADAM TECH INTERCONNECTS 909 Rahway Avenue,
 Union, NJ 07083
 Phone: 908-687-5000
 Fax: 908-687-5710

APPROVALS		DATE
DRAWN	HR	9/11/14
CHECKED	NP	9/11/14
APPROVED		

TITLE .049 [1.25] PITCH WIRE TO BOARD HEADER STRAIGHT, SMT TYPE, W/ CAP		
SIZE X	PART NO. 125SH-B-XX-TS-SMT-PP-T/R	REV. C
REF: S00124T	SCALE: NTS	SHEET 1 OF 1

