

6

5

4

3

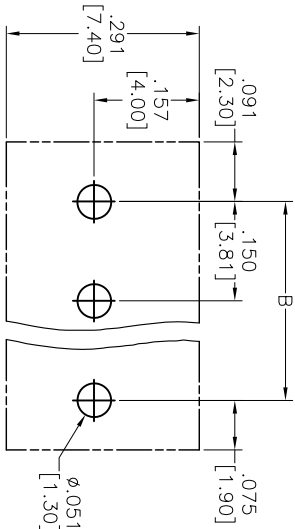
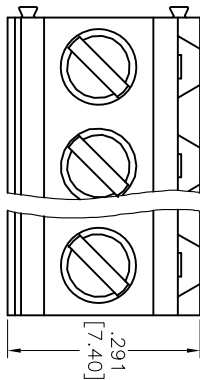
2

1

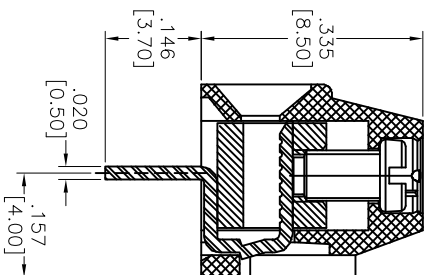
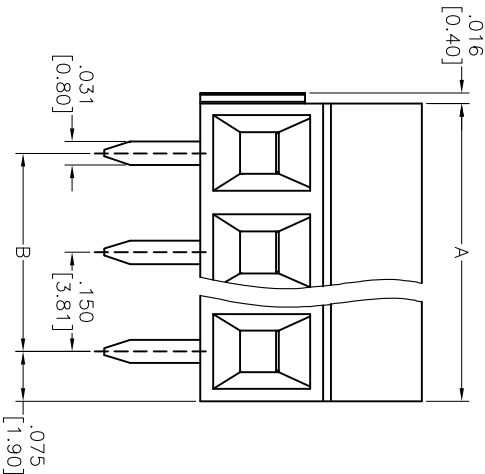
Rev	AWO #	Description	Date	Appr
-		RELEASED	9/19/11	

APPROVED: _____

DATE: _____ TITLE: _____



RECOMMENDED PCB LAYOUT



SPECIFICATIONS:

Material:

Insulator: Thermoplastic, rated UL 94V-0

Clamp: Brass, Tin plated

Contact: Brass, Tin plated

Screw: Steel, M2/Zn plated

Electrical:

Operation voltage: 300 VAC

Current rating: 10 Amps

Withstanding Voltage: 1.6KV

Mechanical:

Wire range(mm²): 0.2~1.5

Torque(lb-in): 1.7

Solid wire (AWG): 16-24

Stranded wire (AWG): 16-24

Temperature Rating:

Operating temperature: -40°C to +115°C

Environmental:

Lead free, RoHS compliant.

Recommended soldering temp: 250°C for 5 sec.

ROHS
COMPLIANT

Positions: 2 thru 24
A = .150 [3.81] x Positions
B = .150 [3.81] x Spaces

	Tolerance
2-5P	±.006 [0.15]
6-12P	±.012 [0.30]
13-24P	±.016 [0.40]

ADAM TECH

909 Ratway Avenue, Union, NJ 07083
Phone: 908-687-5000 Fax: 908-687-5710

EURO BLOCK, .150 [3.81] PITCH

UNLESS OTHERWISE SPECIFIED ALL DIMENSIONS ARE MM [INCHES] TOLERANCES: EXCEPT AS NOTED INCHES				TITLE			
.X ± .10	ØX ± .10	DATE					
.XX ± .020	ØXX ± .015						
.XXX ± .015	ØXXX ± .010						
APPROVALS							
DRAWN	TW	9/19/11					
CHECKED	AY	9/19/11					
APPROVED							
				SIZE	PART NO.	REV.	
				X	EBW-XX-B	-	
REF: S00007T				SCALE: NTS	SHEET 1 OF 1		