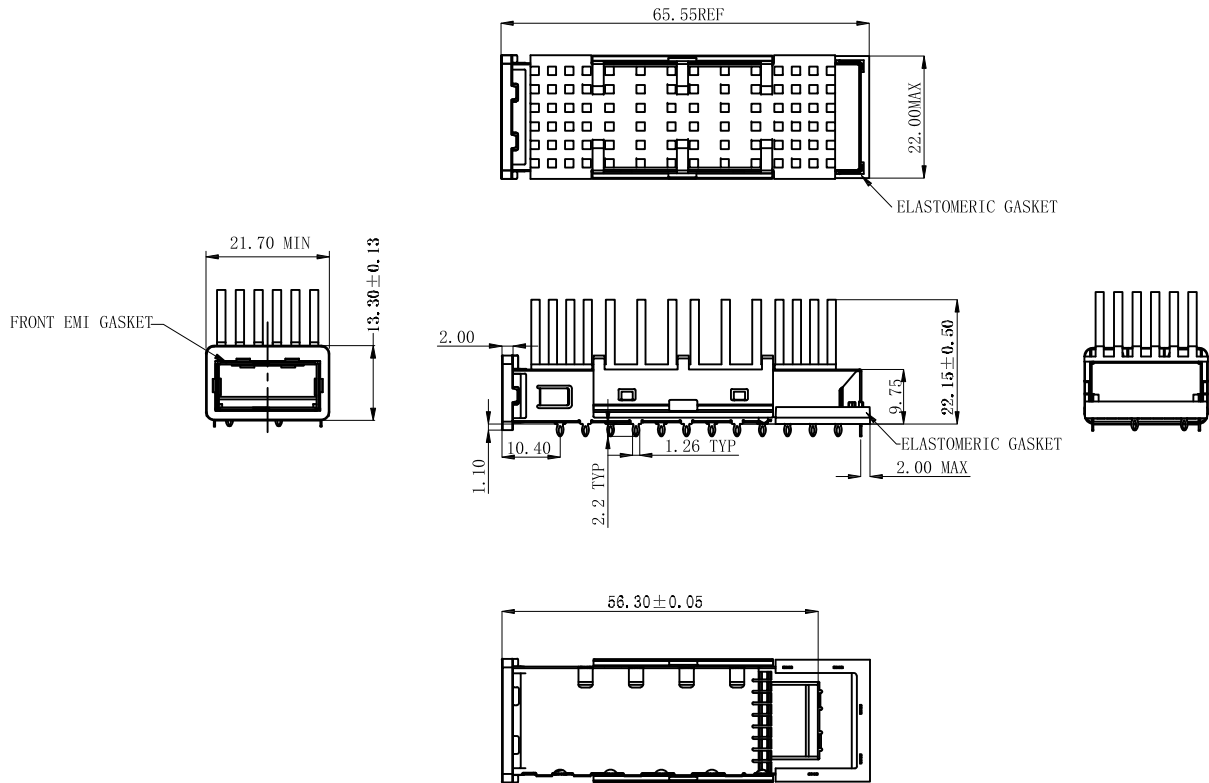


APPROVED: \_\_\_\_\_  
 DATE: \_\_\_\_\_ TITLE: \_\_\_\_\_

Rev	AWO #	Description	Date	Appr
-		RELEASED	5/28/21	
A		UPDATED SPEC.	9/27/21	LH/RC



**SPECIFICATIONS:**

Material:  
 Cage: Copper Alloy  
 Electrometric Gasket: Conductive Rubber  
 Cage Rear EMI Gasket: Conductive Foam  
 Front Flange: Zinc Alloy, Tin over Nickel and Copper flash  
 Front EMI Gasket: Copper Alloy, Matte Tin over Nickel underplate overall  
 Heat Sink Clip: Copper Alloy  
 Heat Sink: Aluminum, Anodic Oxidation, Color: Black ▲  
 Temperature Rating:  
 Operating temperature: -40°C to +85°C  
 Environmental:  
 Lead free, RoHS compliant



UNLESS OTHERWISE SPECIFIED ALL DIMENSIONS ARE MILLIMETERS. TOLERANCES: EXCEPT AS NOTED

mm	Angles
.X ± .25	± 2°
.XX ± .13	
.XXX ± .10	



909 Rahway Avenue,  
 Union, NJ 07083  
 Phone: 908-687-5000  
 Fax: 908-687-5710

DRAWN	WX	5/28/21
CHECKED	RC	5/28/21
APPROVED		
THIS DRAWING CONTAINS INFORMATION THAT IS PROPRIETARY AND SHOULD NOT BE USED WITHOUT PRIOR WRITTEN PERMISSION FROM ADAM TECH		

TITLE		REV.	
10 GIGABIT SMALL FORM FACTOR CAGE, 1PORT DIP TYPE, EMI CLIP W/ GASKET, W/ HEAT SINK		A	
SIZE	PART NO.	REF.	
X	XFC-1-CS6-EMI-HSK	S00005C	
SCALE:	NTS	SHEET 1 OF 2	

6

5

4

3

2

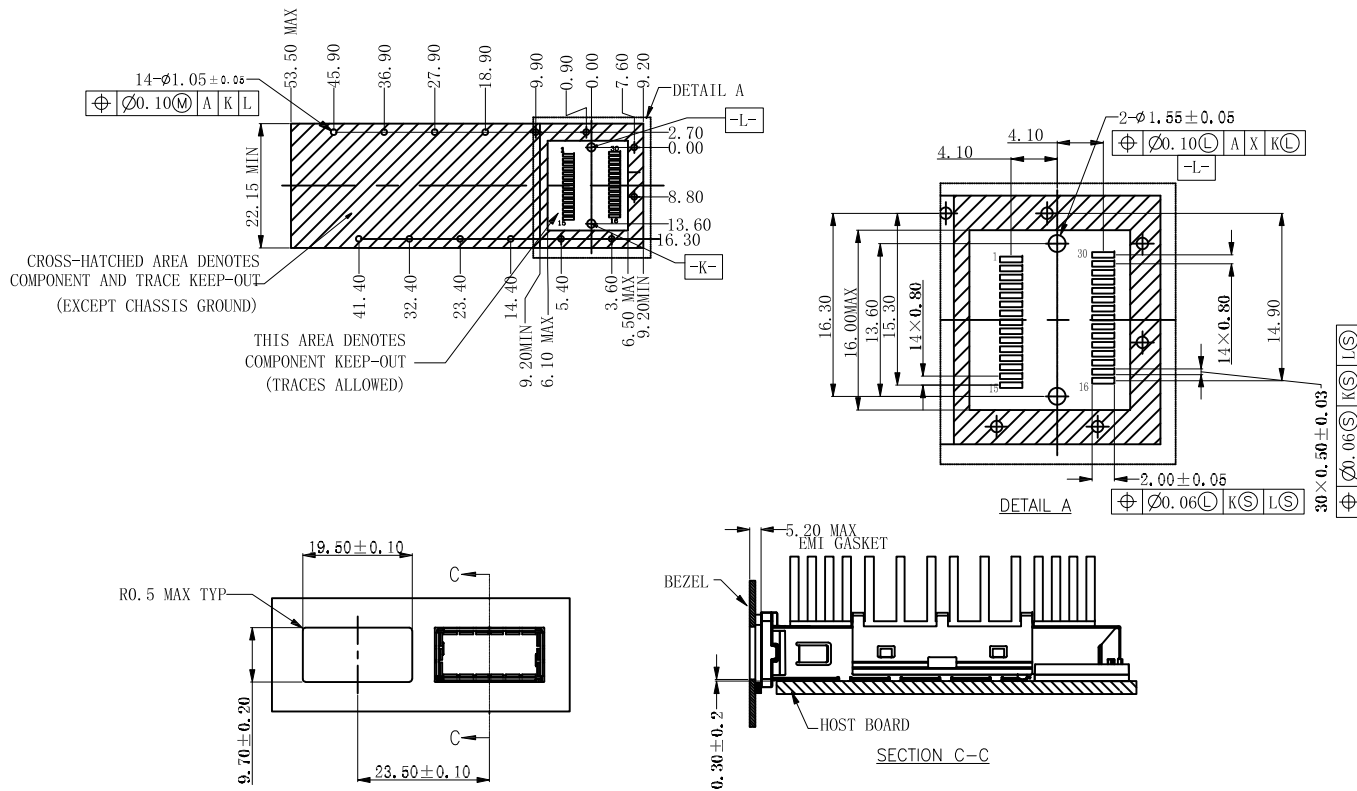
1

APPROVED: \_\_\_\_\_

DATE: \_\_\_\_\_ TITLE: \_\_\_\_\_

Rev	AWO #	Description	Date	Appr
-----	-------	-------------	------	------

SEE SHT 1 OF 2 FOR REVISION



UNLESS OTHERWISE SPECIFIED ALL DIMENSIONS ARE MILLIMETERS. TOLERANCES: EXCEPT AS NOTED

mm	Angles
.X ± .25	± 2°
.XX ± .13	
.XXX ± .10	

DRAWN	WX	5/28/21
CHECKED	RC	5/28/21
APPROVED		

THIS DRAWING CONTAINS INFORMATION THAT IS PROPRIETARY AND SHOULD NOT BE USED WITHOUT PRIOR WRITTEN PERMISSION FROM ADAM TECH

**ADAM TECH**

909 Rahway Avenue,  
Union, NJ 07083  
Phone: 908-687-5000  
Fax: 908-687-5710

TITLE  
10 GIGABIT SMALL FORM FACTOR CAGE, 1PORT  
DIP TYPE, EMI CLIP W/ GASKET, W/ HEAT SINK

SIZE X	PART NO. XFC-1-CS6-EMI-HSK	REV. A
-----------	-------------------------------	-----------

REF: S00005C SCALE: NTS SHEET 2 OF 2

6

5

4

3

2

1