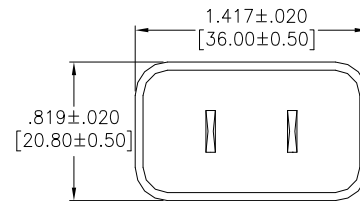
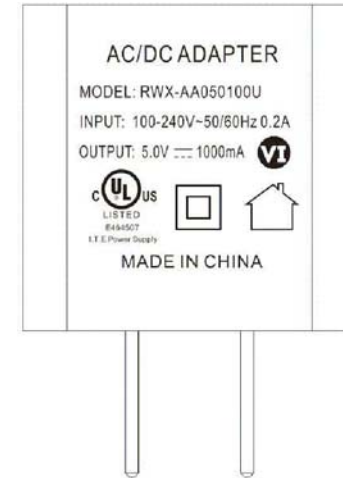
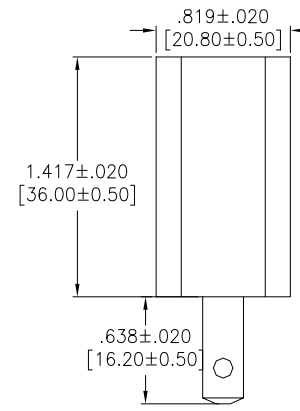
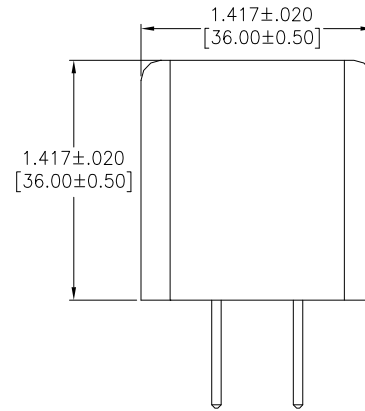
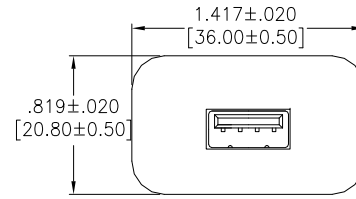


APPROVED: \_\_\_\_\_  
 DATE: \_\_\_\_\_ TITLE: \_\_\_\_\_

Rev	AWO #	Description	Date	Appr
-		RELEASED	3/23/21	
A		UPDATE DRAWING	4/27/21	WX/JC
B		UPDATE DRAWING	6/10/21	JJ



**SPECIFICATIONS:**

Material:  
 Case, cover & Chassis: PC, rated UL94V-0, Color: Black  
 AC Blades: Brass, Nickel plated

Electrical:  
 Input:  
 Voltage: 100Vac to 240Vac  
 Current: 0.4A Max. @ 100Vac input & max load  
 Frequency: 50Hz / 60Hz

Output:  
 Voltage: 5.0Vdc  
 Current: 3.0A max. (Current Range: 0 ~ 1.0A)  
 Load Regulation: ±5%

Insulation Resistance: 10 Mohms min @ 500VDC  
 Dielectric withstanding voltage (Hi-pot): 3,000V AC For 1 Minute  
 Leakage Current: 30mA max. @ 230V AC/50Hz  
 Temperature Rating:  
 Operating Temperature: 0°C to +45°C  
 Storage Temperature: -25°C to +85°C

Environmental:  
 Lead free, RoHS compliant.

UNLESS OTHERWISE SPECIFIED ALL DIMENSIONS ARE INCHES [MM]. TOLERANCES: EXCEPT AS NOTED

INCHES		HOLES	
.X	±.10	ØX	±.10
.XX	±.020	ØXX	±.015
.XXX	±.015	ØXXX	±.010

**ADAM TECH**

909 Rahway Avenue,  
 Union, NJ 07083  
 Phone: 908-687-5000  
 Fax: 908-687-5710

DRAWN	WX	3/23/21
CHECKED	AC	3/23/21
APPROVED		

TITLE  
**AC POWER ADAPTER, NEMA 1-15 TO  
 USB TYPE A, 5V, 1 AMP, COLOR WHITE**

THIS DRAWING CONTAINS INFORMATION THAT IS PROPRIETARY AND SHOULD NOT BE USED WITHOUT PRIOR WRITTEN PERMISSION FROM ADAM TECH

SIZE X	PART NO. PA-010	REV. B
-----------	--------------------	-----------

REF: \_\_\_\_\_ SCALE: NTS SHEET 1 OF 1