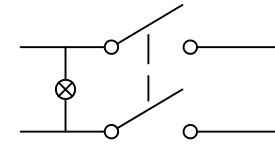
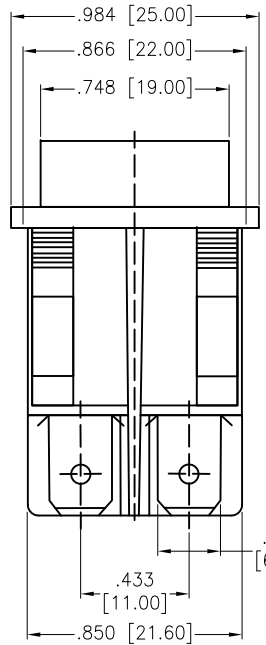
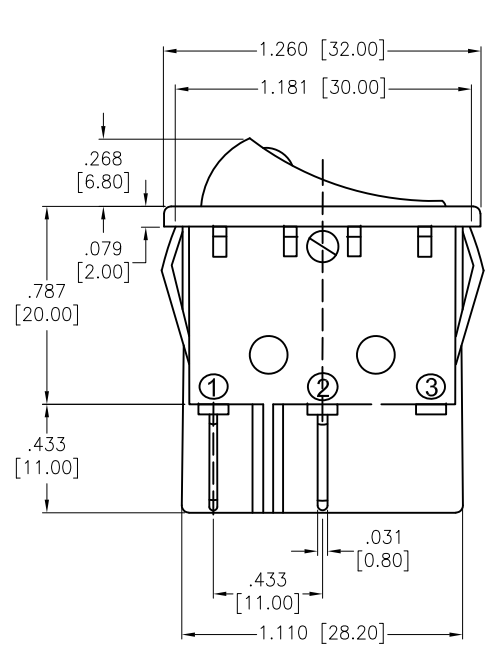
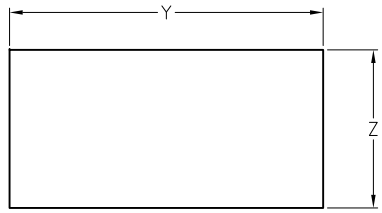


APPROVED: _____
 DATE: _____ TITLE: _____

Rev	AWO #	Description	Date	Appr
-		RELEASED	11/18/21	



CIRCUIT DIAGRAM
(DPST) ON-OFF



RECOMMENDED
PANEL CUT-OUT

X	Y	Z
.030~.049 [0.75~1.25]	1.181 [30.00]	.866 [22.00]
.049~.079 [1.25~2.00]	1.185 [30.10]	.866 [22.00]
.079~.118 [2.00~3.00]	1.189 [30.20]	.866 [22.00]

X: PANEL THICKNESS

SW-R1-3A-E-LXXX-2

	Lighted Actuator	Actuator Markings	LED Voltage
W	Lighted White	1	1 3V
R	Lighted Red	2	2 6V
G	Lighted Green	3	3 12V
Y	Lighted Yellow (Amber)	4	4 24V
B	Lighted Blue	5	5 48V
O	Lighted Orange		6 110V
			7 220V

Replace "x" in P/N with the corresponding switch color and marking

SPECIFICATIONS:
Material:
 Body: Nylon 66, Color Black, Rated UL 94V-0
 Terminal: Brass, Silver plated
 Button: Nylon 66, Lighted color (See Chart). White color markings
Electrical:
 The rated load: 250V AC, 15A
 125V AC, 20A
 Contact resistance: 35 mohms max
 Insulation resistance: 100mΩ min (500VDC)
 Dielectric withstanding voltage: 1500 VAC for 1 minute
Mechanical:
 Electrical life: 10000 Cycles min
 Temperature Rating:
 Operating temperature: -25°C to +85°C
 Environmental:
 Lead free, RoHS compliant



UNLESS OTHERWISE SPECIFIED ALL DIMENSIONS ARE INCHES [MM]. TOLERANCES: EXCEPT AS NOTED

INCHES		HOLES	
.x	± .10	∅x	± .10
.xx	± .020	∅xx	± .015
.xxx	± .015	∅xxx	± .010

DRAWN	WX	11/18/21
CHECKED	RC	11/18/21
APPROVED		

THIS DRAWING CONTAINS INFORMATION THAT IS PROPRIETARY AND SHOULD NOT BE USED WITHOUT PRIOR WRITTEN PERMISSION FROM ADAM TECH

ADAM TECH 909 Rahway Avenue,
 Union, NJ 07083
 Phone: 908-687-5000
 Fax: 908-687-5710

TITLE
 SWITCH, MEDIUM ROCKER, DOT ILLUMINATED
 DPST, ON-OFF, QC .250 [6.35MM], LIGHTED

SIZE X	PART NO. SW-R1-3A-E-LXXX-2	REV. -
REF: S00206C	SCALE: NTS	SHEET 1 OF 1