

6

5

4

3

2

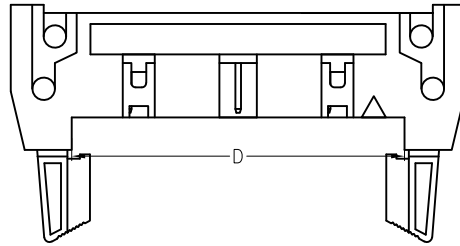
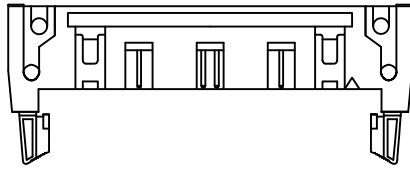
1

APPROVED: \_\_\_\_\_

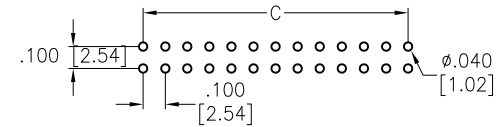
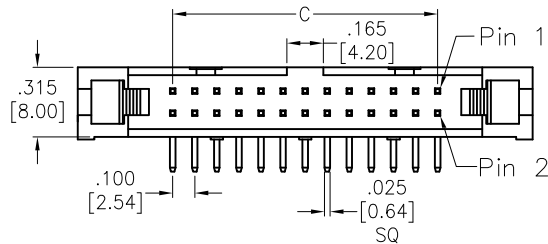
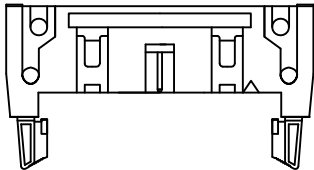
DATE: \_\_\_\_\_ TITLE: \_\_\_\_\_

Rev	AWO #	Description	Date	Appr
-		RELEASED	11/11/11	
A		ADDED DRAWING	12/25/18	AY/RC1
B		UPDATE DRAWING	12/23/21	WX/JL1
C		UPDATE DRAWING	2/6/24	LH/AY1

60, 64 PIN

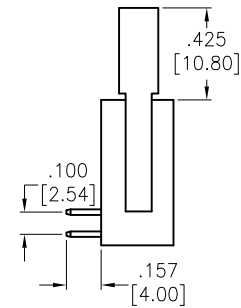
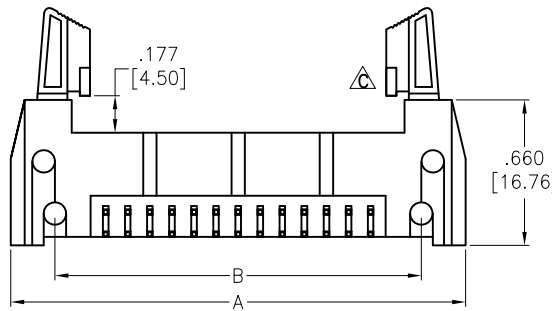
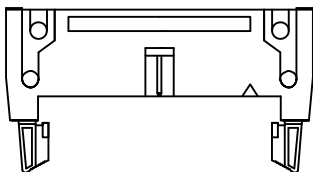


20, 24, 26, 30, 34, 40, 50 PIN



RECOMMENDED PCB LAYOUT

10, 14, 16 PIN



SPECIFICATIONS:

- Material:
- Insulator: PBT, rated UL 94V-0
- Insulator color: Black
- Contacts: Brass
- Plating:
- Gold over Nickel underplate overall
- Electrical:
- Current rating: 1 Amp
- Contact resistance: 10 mohms max
- Insulation resistance: 1,000 Mohms min
- Dielectric withstanding voltage: 500 VAC for 1 minute
- Temperature Rating:
- Operating temperature: -55°C to +105°C

Lead free, RoHS compliant



Positions: 10, 14, 16, 20, 24, 26, 30, 34, 40, 50, 60, 64

- A = .100 [2.54] x No. of Spaces + .855 [21.71]
- B = .100 [2.54] x No. of Spaces + .454 [11.54]
- C = .100 [2.54] x No. of Spaces
- D = .100 [2.54] x No. of Spaces + .305 [7.74]

UNLESS OTHERWISE SPECIFIED ALL DIMENSIONS ARE INCHES [MM]. TOLERANCES: EXCEPT AS NOTED

INCHES		HOLES	
.X	±.10	Ø.X	±.10
.XX	±.020	Ø.XX	±.015
.XXX	±.015	Ø.XXX	±.010

DRAWN	AY	11/11/11
CHECKED	AH	11/11/11
APPROVED		

THIS DRAWING CONTAINS INFORMATION THAT IS PROPRIETARY AND SHOULD NOT BE USED WITHOUT PRIOR WRITTEN PERMISSION FROM ADAM TECH



909 Rahway Avenue,  
Union, NJ 07083  
Phone: 908-687-5000  
Fax: 908-687-5710

TITLE  
LATCH BOX HEADER, RIGHT ANGLE  
SHORT EJECTOR LATCHES

SIZE X	PART NO. MHR-XX-HUAS	REV. C
REF: S00059T	SCALE: NTS	SHEET 1 OF 1

6

5

4

3

2

1