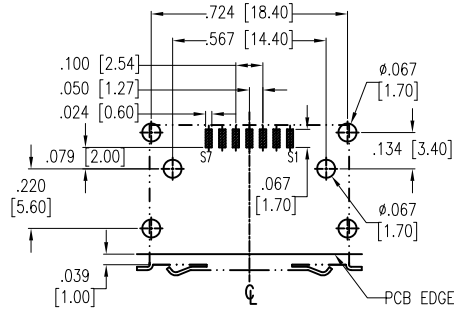
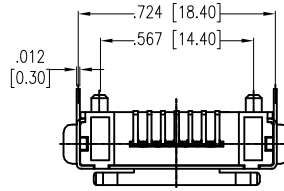


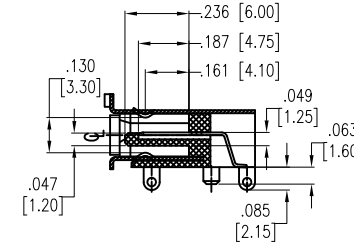
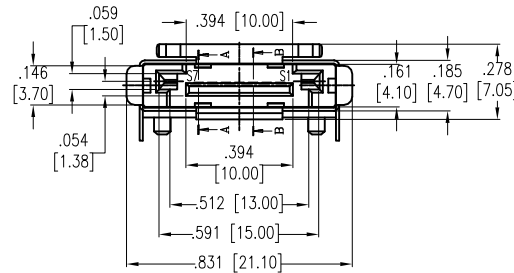
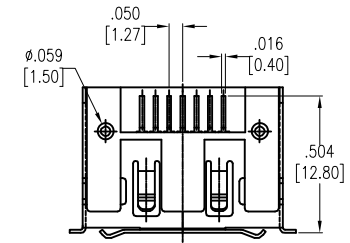
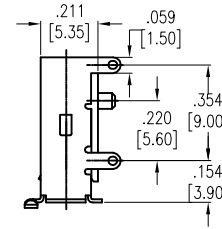
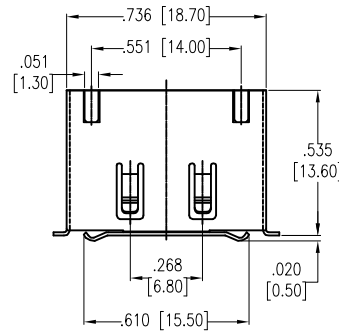
APPROVED: _____
 DATE: _____ TITLE: _____

Rev	AWO #	Description	Date	Appr
-		RELEASED	3/16/12	
A		UPDATE SHAPE	12/19/14	AY/LL
B		UPDATE DRAWING	10/12/17	HR/RC1

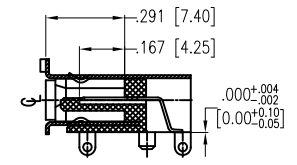
PIN NO.	Signal Name
S1	GND
S2	A+
S3	A-
S4	GND
S5	B-
S6	B+
S7	GND



RECOMMENDED PCB LAYOUT



SECTION A-A



SECTION B-B

SPECIFICATIONS:
 Material:
 Insulator: Hi-temp thermoplastic, rated UL 94V-0
 Insulator color: Black
 Contacts: Brass
 Plating:
 15u" Gold over Nickel underplate on contact area,
 Tin over Nickel underplate on PCB tails.
 Electrical:
 Operating voltage: 100 VAC max
 Current rating: 1.5 Ampere per Contact
 Contact resistance: 30 mohms max
 Insulation resistance: 1,000 Mohms min
 Dielectric withstanding voltage: 500 VAC
 Temperature Rating:
 Operating temperature: -55°C to +85°C
 Environmental:
 Lead free, RoHS compliant.



UNLESS OTHERWISE SPECIFIED
 ALL DIMENSIONS ARE INCHES [MM]
 TOLERANCES: EXCEPT AS NOTED
 INCHES HOLES
 .X ± .10 Ø.X ± .10
 .XX ± .020 Ø.XX ± .015
 .XXX ± .015 Ø.XXX ± .010

APPROVALS		DATE
DRAWN	AY	3/16/12
CHECKED	CC	3/16/12
APPROVED		

ADAM TECH

909 Rahway Avenue, Union, NJ 07083
 Phone: 908-687-5000 Fax: 908-687-5710

TITLE		
eSATA CONNECTOR, RIGHT ANGLE SURFACE MOUNT, 15U" SEL GOLD PLATED		
SIZE	PART NO.	REV.
X	SATA-J-NP-SMT-P-S-PG-15	B
REF:	S00078T	SCALE: NTS SHEET 1 OF 1