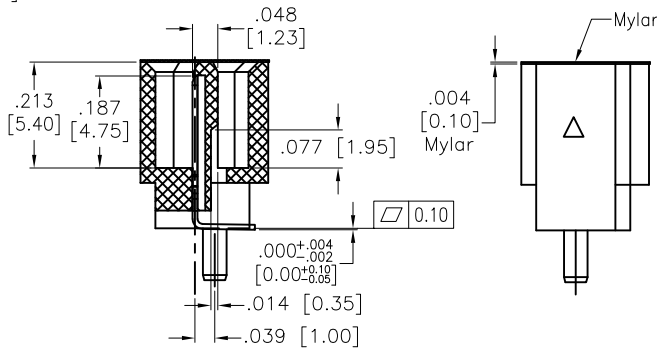
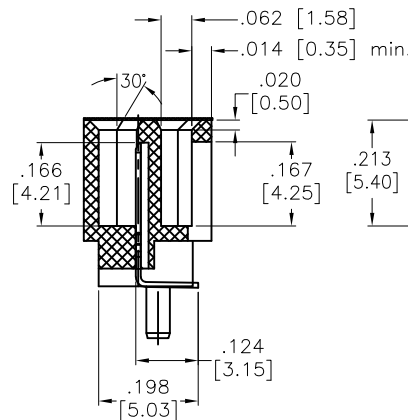
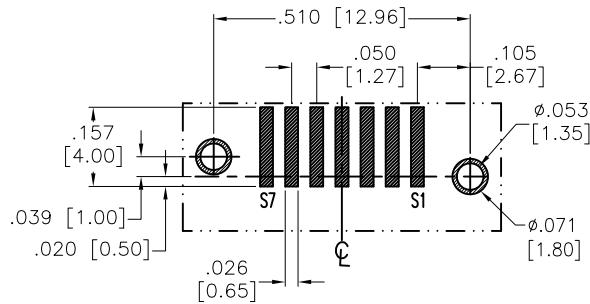
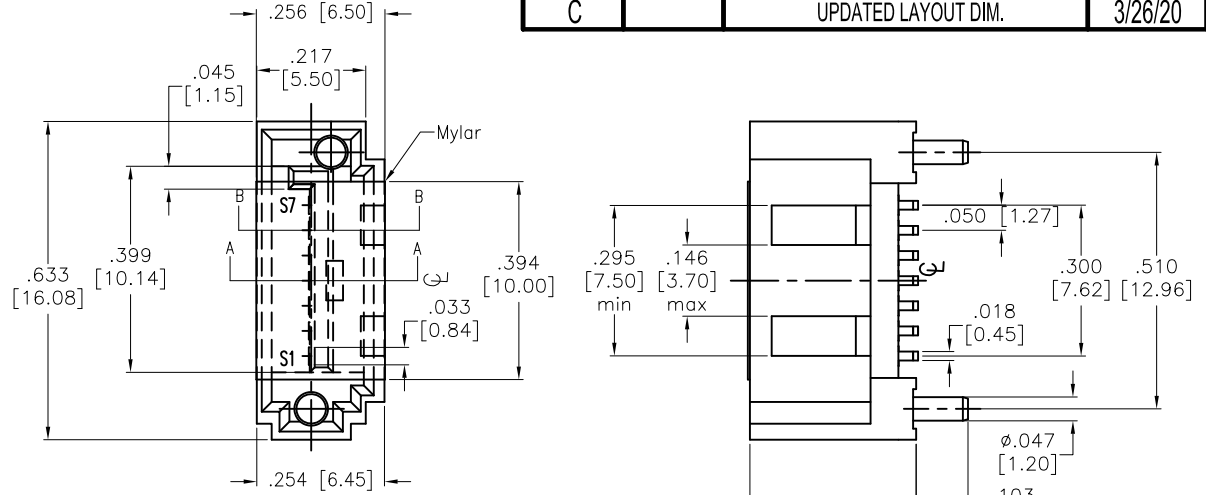


APPROVED: _____
 DATE: _____ TITLE: _____

Rev	AWO #	Description	Date	Appr
-		RELEASED	7/11/11	
A		REVISED DIM.	5/14/13	
B		UPDATED DRAWING	8/22/16	HR/CH
C		UPDATED LAYOUT DIM.	3/26/20	AY/LW

Signal Segment	
Name	Type
S1	GND
S2	A+
S3	A-
S4	GND
S5	B-
S6	B+
S7	GND



SECTION B-B

SECTION A-A

SPECIFICATIONS:

Material:
 Insulator: Hi-temp thermoplastic, rated UL 94V-0
 Insulator color: Black
 Contacts: Brass
 Boardlock: Brass, Tin plated
Plating:
 Gold Flash over Nickel underplate on mating area,
 Tin over Nickel underplate on tails

Electrical:
 Current rating: 1.5 Ampere per Contact
 Contact resistance: 30 mohms max.
 Insulation resistance: 1,000 Mohms min
 Dielectric withstanding voltage: 500 VAC

Mechanical:
 Insertion force: 45N max
 Withdrawal force: 10N min
 Durability: 500 Cycles
Temperature Rating:
 Operating temperature: -55°C to +85°C
 Environmental:
 Lead free, RoHS compliant.



PACKAGED ON TAPE & REEL

UNLESS OTHERWISE SPECIFIED ALL DIMENSIONS ARE INCHES [MM] TOLERANCES: EXCEPT AS NOTED INCHES HOLES .X ± .10 Ø.X ± .10 .XX ± .020 Ø.XX ± .015 .XXX ± .015 Ø.XXX ± .010		ADAM TECH INTERCONNECTS 909 Rahway Avenue, Union, NJ 07083 Phone: 908-687-5000 Fax: 908-687-5710	
APPROVALS DRAWN AY 7/11/11 CHECKED SC 7/11/11 APPROVED		DATE DATE DATE	
TITLE SATA 7P STRAIGHT DIP B TYPE SHIELD ROUNDED COPPER POLE(THROUGH TYPE) MALE		SIZE X	PART NO. SATA-P-PR-SMT-KT-T/R
REF: S00078T		SCALE: NTS	REV. C SHEET 1 OF 1