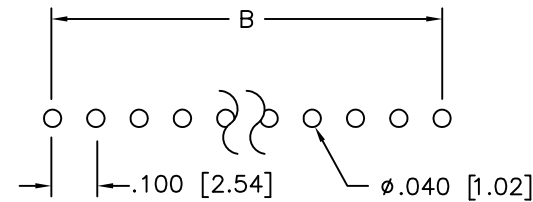
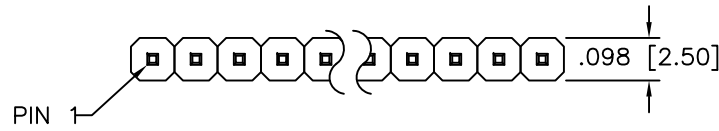
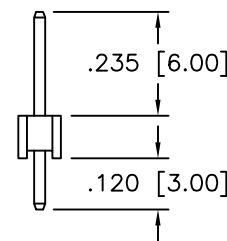
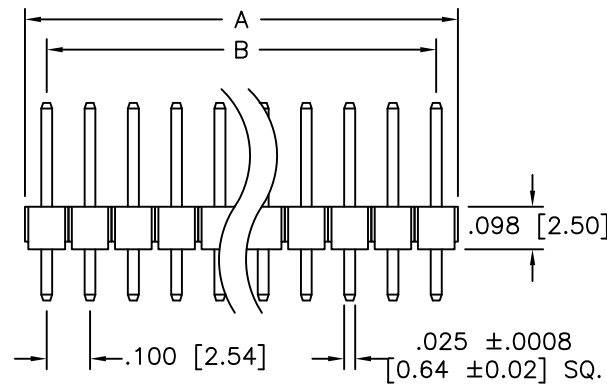


APPROVED: \_\_\_\_\_  
 DATE: \_\_\_\_\_ TITLE: \_\_\_\_\_

Rev	AWO #	Description	Date	Appr
-		RELEASED	10/5/04	
A		REVISED SPEC.	8/18/09	



RECOMMENDED PCB LAYOUT



**SPECIFICATIONS:**

**Material:**  
 Insulator: PBT, glass reinforced, rated UL 94V-0  
 Insulator color: Black  
 Contacts: Brass  
**Plating:**  
 Gold Flash over Nickel underplate on mating area,  
 Tin over Copper underplate on solder tails.  
**Electrical:**  
 Current rating: 3 Amps max  
 Insulation resistance: 5000 Mohms min @ 500 VDC  
 Contact resistance: 20 mohms max  
 Dielectric withstanding voltage: 500 VAC for 1 minute  
 Temperature Rating:  
 Operating temperature: -40°C to +105°C  
**Environmental:**  
 Lead free, RoHS compliant



Positions: 1 thru 40

A = .100 [2.54] X No. of Positions  
 B = .100 [2.54] X No. of Spaces

UNLESS OTHERWISE SPECIFIED ALL DIMENSIONS ARE INCHES [MM] TOLERANCES: EXCEPT AS NOTED		<b>ADAM TECH</b> 909 Rahway Avenue, Union, NJ 07083 Phone: 908-687-5000 Fax: 908-687-5710	
INCHES HOLES			
.X ± .10	∅X ± .10	TITLE PIN HEADER, SINGLE ROW, .100 PITCH STRAIGHT, .235 MATING / .120 TAIL	
.XX ± .020	∅XX ± .015		
.XXX ± .015	∅XXX ± .010	SIZE X	
APPROVALS		PART NO. PH1-XX-SGA	
DRAWN	SS	REV. A	
CHECKED		REF: S00059T	
APPROVED		SCALE: NTS	SHEET 1 OF 1