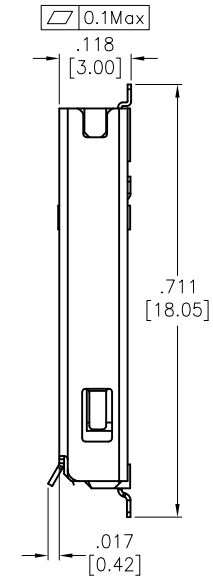
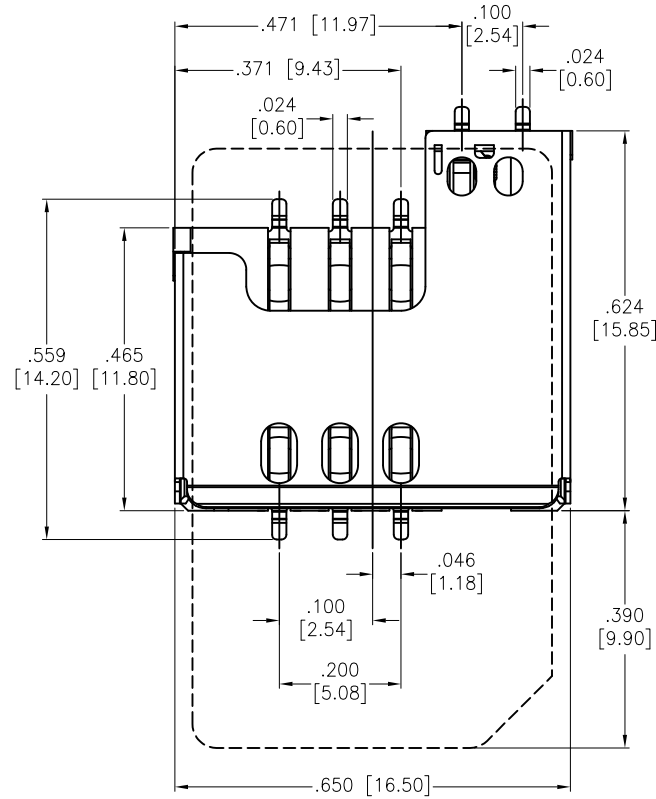
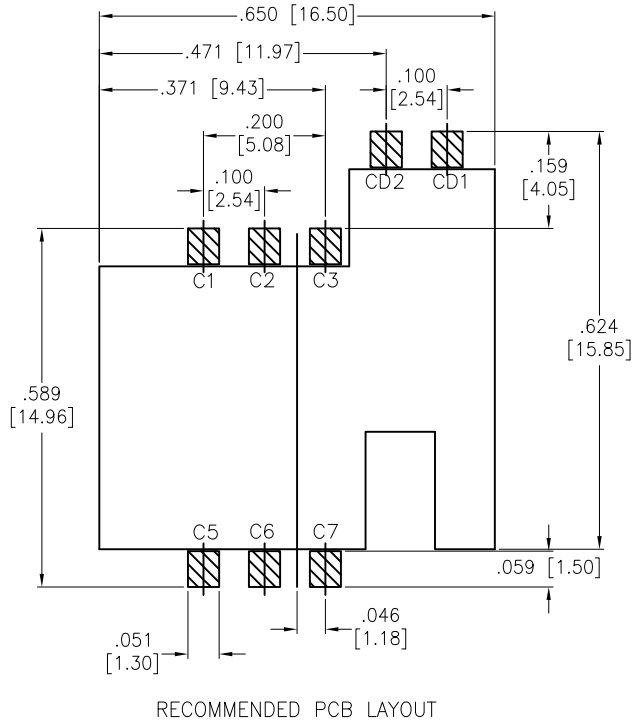
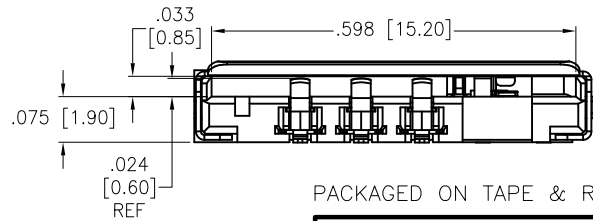
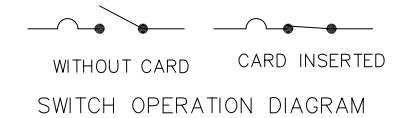


APPROVED: _____
 DATE: _____ TITLE: _____

Rev	AWO #	Description	Date	Appr
-		RELEASED	10/23/15	
A		UPDATE TEMPERATURE RATING	2/3/20	AY/KL



ELECTRIC FUNCTION	DETECT SWITCH
WITHOUT CARD	OPEN
CARD INSERTED	CLOSED



SPECIFICATIONS:
 Material:
 Insulator: Hi-Temp Thermoplastic, rated UL 94V-0
 Insulator color: Black
 Contacts: Phosphor Bronze
 Shell: Stainless Steel
 Plating:
 Gold flash over Nickel underplate on contact area,
 Matte Tin over Copper underplate on solder tails
 Electrical:
 Current rating: 0.5 Amps max
 Contact resistance: 30 mohms max
 Insulation resistance: 1,000 Mohms min @ 500 VDC
 Dielectric withstanding voltage: 500 VAC for 1 minute
 Temperature Rating:
 Operating temperature: -40°C to +85°C Δ
 Environmental:
 Lead free, RoHS compliant.



PACKAGED ON TAPE & REEL

UNLESS OTHERWISE SPECIFIED ALL DIMENSIONS ARE INCHES [MM] TOLERANCES: EXCEPT AS NOTED		
INCHES		HOLES
.X ± .10	Ø.X ± .10	
.XX ± .020	Ø.XX ± .015	
.XXX ± .015	Ø.XXX ± .010	
APPROVALS		DATE
DRAWN	HR	10/23/15
CHECKED	SC	10/23/15
APPROVED		

ADAM TECH INTERCONNECTS 909 Rahway Avenue,
 Union, NJ 07083
 Phone: 908-687-5000
 Fax: 908-687-5710

TITLE SIM CARD CONNECTOR, 6 POSITION SURFACE MOUNT			
SIZE X	PART NO. SCC-K-06-SGM-SMT-B-T/R	REV. A	
REF: S00275T	SCALE: NTS	SHEET 1 OF 1	

6

5

4

3

2

1

D

C

B

A

6

5

4

3

2

1