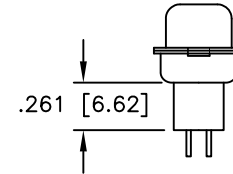
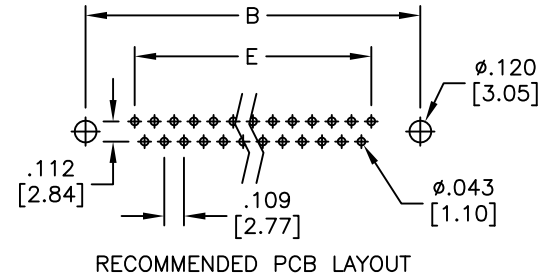
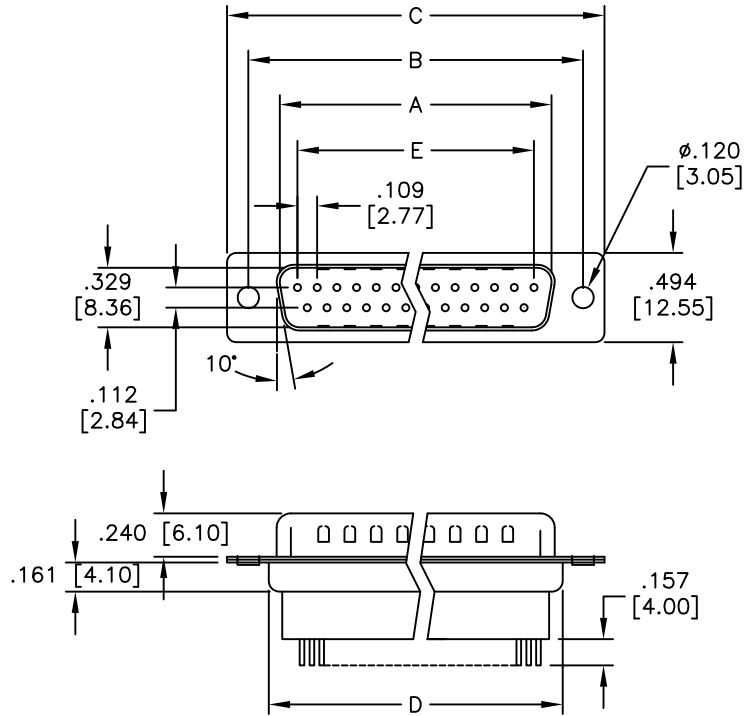


APPROVED: _____
 DATE: _____ TITLE: _____

Rev	AWO #	Description	Date	Appr
-		RELEASED	2/11/10	
A		UPDATE DRAWING	5/18/18	AY/YC



DXXX	NO. OF CONTACTS	DIMENSIONS				
		A	B	C	D	E
DE09	9	.666 [16.92]	.984 [24.99]	1.213 [30.81]	.756 [19.20]	.436 [11.08]
DA15	15	.994 [25.25]	1.311 [33.30]	1.543 [39.20]	1.091 [27.70]	.763 [19.39]
DB25	25	1.534 [38.96]	1.852 [47.04]	2.089 [53.05]	1.618 [41.10]	1.309 [33.24]
DC37	37	2.182 [55.42]	2.500 [63.50]	2.732 [69.40]	2.256 [57.30]	1.963 [49.86]

SPECIFICATIONS:

Material:
 Insulator: PBT, glass reinforced, rated UL 94V-0
 Insulator color: Black
 Contacts: Copper Alloy
 Shell: Steel, Tin plated
 Plating:
 Gold flash over Nickel underplate on contact area
 Electrical:
 Voltage rating: 250 VAC/rms 60Hz
 Current rating: 3 Amp
 Contact resistance: 20 mohms max @ 1 AMP DC
 Insulation resistance: 1000 Mohms @ 500 VDC
 Dielectric withstanding voltage: 1000 VAC/rms for 1 minute
 Environmental:
 Lead free, RoHS compliant



UNLESS OTHERWISE SPECIFIED ALL DIMENSIONS ARE INCHES [MM] TOLERANCES: EXCEPT AS NOTED	
INCHES	HOLES
.X ± .10	Ø.X ± .10
.XX ± .020	Ø.XX ± .015
.XXX ± .015	Ø.XXX ± .010
APPROVALS	
DRAWN	DATE
CHECKED	2/11/10
APPROVED	

ADAM TECH INTERCONNECTS
 909 Rahway Avenue,
 Union, NJ 07083
 Phone: 908-687-5000
 Fax: 908-687-5710

TITLE		
D-SUB PLUG, HIGH PROFILE, STRAIGHT, PCB TYPE		
SIZE	PART NO.	REV.
X	DXXX-PE-1	A
REF: S00087T	SCALE: NTS	SHEET 1 OF 1