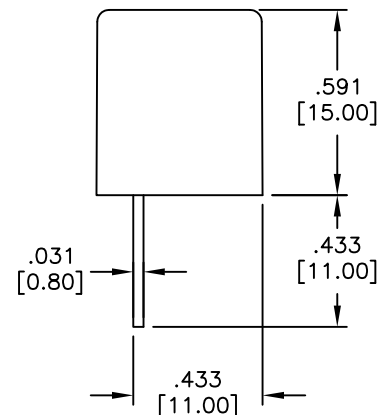
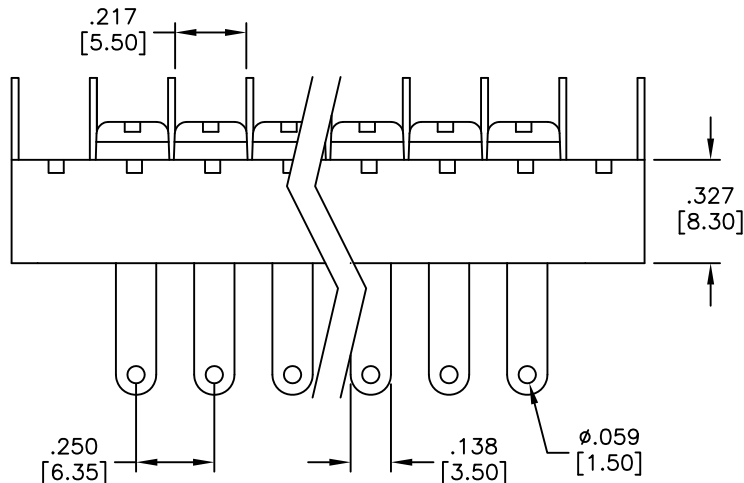
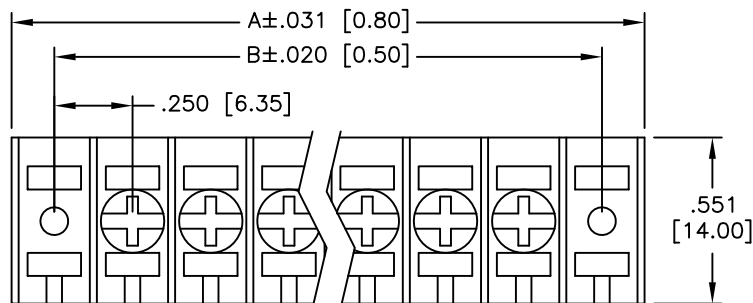


APPROVED: _____

DATE: _____ TITLE: _____

Rev	AWO #	Description	Date	Appr
-		RELEASED	6/7/05	
A		REDRAWN	2/24/17	HR/CT



SPECIFICATIONS:

Material:

Insulator: Nylon66, rated UL 94V-0

Insulator color: Black

Contact: Brass, Tin plated

Screw: Steel, M3, Nickel plated

Electrical:

Rated: 300VAC, 10A

Insulation resistance: 1,000 Mohms min @ DC500V

Insulation withstands voltage: 2000 VAC/min

Mechanical:

Screw torque value: 10 Kg-cm

Wire range: 18 - 22 AWG

Temperature Rating:

Operating temperature: -40°C to +120°C

Environmental:

Lead free, RoHS compliant



Positions: 2 thru 32

A = .250 [6.35] x No. of Positions + .035 [0.90]

B = .250 [6.35] x No. of Spaces

UNLESS OTHERWISE SPECIFIED
ALL DIMENSIONS ARE INCHES [MM]
TOLERANCES: EXCEPT AS NOTED

INCHES		HOLES	
.X	± .10	Ø.X	±.10
.XX	± .020	Ø.XX	±.015
.XXX	± .015	Ø.XXX	±.010

APPROVALS DATE

DRAWN SS 6/7/05

CHECKED

APPROVED

ADAM TECH

909 Rahway Avenue, Union, NJ 07083

Phone: 908-687-5000 Fax: 908-687-5710

TITLE
.250 [6.35] CENTERLINE BARRIER BLOCK
CLIPTITE TERMINALS, MOUNT ENDS

SIZE X PART NO. TBA-XX-04-M REV. A

REF: S00031T SCALE: NTS SHEET 1 OF 1