

6

5

4

3

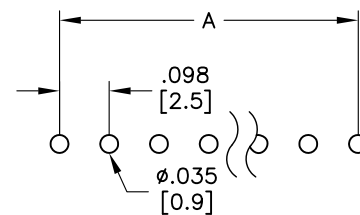
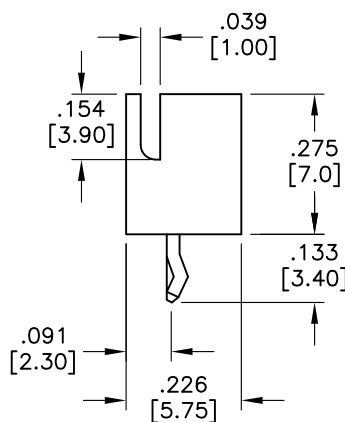
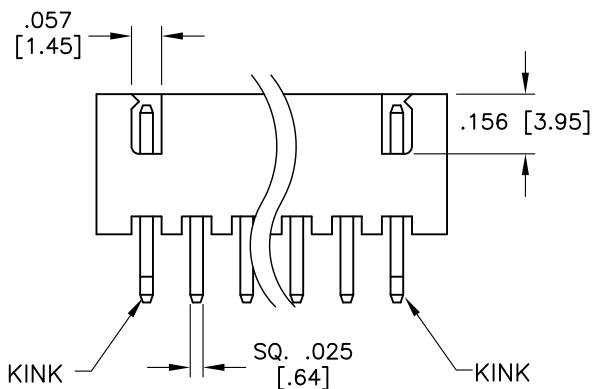
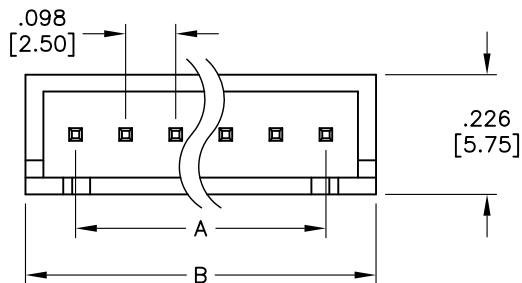
2

1

APPROVED: _____

DATE: _____ TITLE: _____

Rev	AWO #	Description	Date	Appr
-		RELEASED	4/13/06	
A		PART REVISION	4/19/06	
B		ADDED DIM.	8/11/09	



RECOMMENDED PCB LAYOUT

SPECIFICATIONS:

Material:
 Insulator: Nylon 66 UL 94V-0, White
 Contact: Brass
 Plating:
 Tin over Copper underplate overall
 Electrical:
 Operating voltage: 250 VAC max
 Current rating: 3 Amp max
 Contact Resistance: 10M ohms max
 Insulation resistance: 1,000Mohms min.
 Temperature Rating:
 Operating temperature: -25°C to +85°C
 Environmental:
 Lead free, RoHS compliant



Positions: 2 thru 20

A = .098 [2.50] x No. of Spaces

B = .098 [2.50] x No. of Spaces + .196 [5.0]

UNLESS OTHERWISE SPECIFIED ALL DIMENSIONS ARE INCHES [MM] TOLERANCES: EXCEPT AS NOTED		ADAM TECH 909 Rahway Avenue, Union, NJ 07083 Phone: 908-687-5000 Fax: 908-687-5710	
INCHES HOLES			
.X ± .10	Ø.X ± .10	TITLE WIRE TO BOARD PITCH: 2.5MM WAFER STRAIGHT TYPE W/ KINK	
.XX ± .020	Ø.XX ± .015		
.XXX ± .015	Ø.XXX ± .010		
APPROVALS		DATE	
DRAWN	LFJ	4/13/06	
CHECKED			
APPROVED			
SIZE X	PART NO. 25SH-B-XX-TS	REV. B	
REF:	SCALE: NTS	SHEET 1 OF 1	

6

5

4

3

2

1